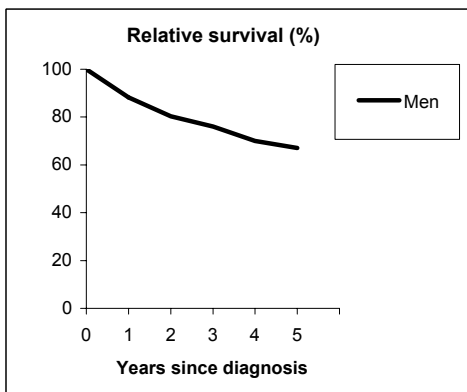


PROSTATE (ICD-IX 185)

TORINO - Incident cases 1990-'94

AGE CLASSES	Men
15-44	1
45-54	19
55-64	192
65-74	363
75+	455
ALL	1,030

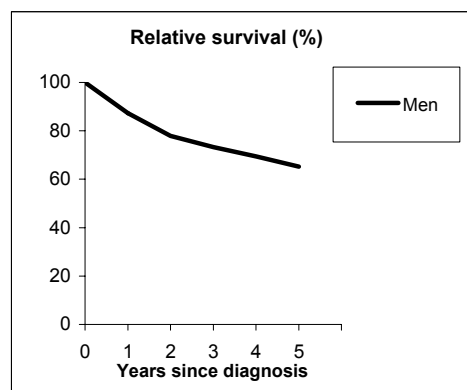


Observed and Relative survival (%)
(in parenthesis 95% confidence limits of 5 years survival)

	Men		Women		ALL	
	obs	rel	obs	rel	obs	rel
1 year	83	88	-	-	83	88
3 years	64	76	-	-	64	76
5 years	49	67	-	-	49	67
95% CI	(46-52)	(63-71)	-	-	(46-52)	(63-71)

GENOVA - Incident cases 1990-'94

AGE CLASSES	Men
15-44	0
45-54	16
55-64	156
65-74	432
75+	519
ALL	1,123



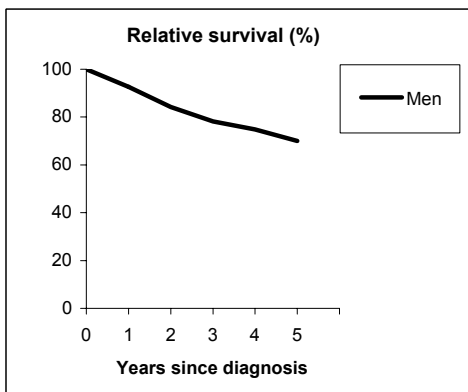
Observed and Relative survival (%)
(in parenthesis 95% confidence limits of 5 years survival)

	Men		Women		ALL	
	obs	rel	obs	rel	obs	rel
1 year	82	87	-	-	82	87
3 years	61	73	-	-	61	73
5 years	47	65	-	-	47	65
95% CI	(44-50)	(61-69)	-	-	(44-50)	(61-69)

PROSTATE (ICD-IX 185)

VARESE - Incident cases 1990-'94

AGE CLASSES	Men
15-44	0
45-54	22
55-64	135
65-74	311
75+	427
ALL	895

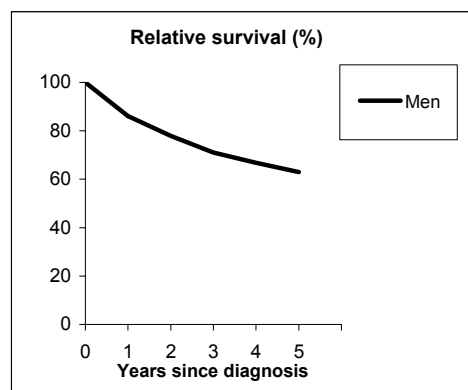


Observed and Relative survival (%)
(in parenthesis 95% confidence limits of 5 years survival)

	Men		Women		ALL	
	obs	rel	obs	rel	obs	rel
1 year	87	93	-	-	87	93
3 years	64	78	-	-	64	78
5 years	50	70	-	-	50	70
95% CI	(46-53)	(65-75)	-	-	(46-53)	(65-75)

VENETO - Incident cases 1990-'94

AGE CLASSES	Men
15-44	2
45-54	52
55-64	342
65-74	895
75+	1,127
ALL	2,418



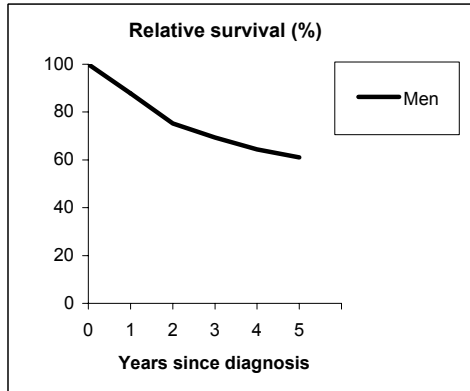
Observed and Relative survival (%)
(in parenthesis 95% confidence limits of 5 years survival)

	Men		Women		ALL	
	obs	rel	obs	rel	obs	rel
1 year	81	86	-	-	81	86
3 years	59	71	-	-	59	71
5 years	45	63	-	-	45	63
95% CI	(43-47)	(60-66)	-	-	(43-47)	(60-66)

PROSTATE (ICD-IX 185)

PARMA - Incident cases 1990-'94

AGE CLASSES	Men
15-44	0
45-54	6
55-64	69
65-74	166
75+	233
ALL	474

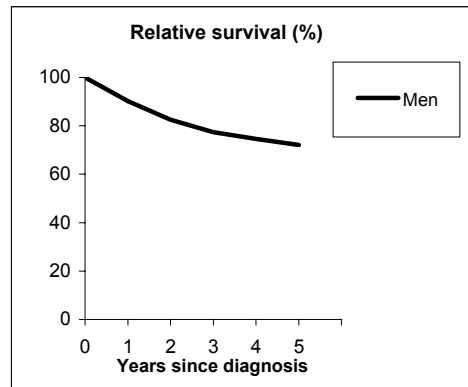


Observed and Relative survival (%)
(in parenthesis 95% confidence limits of 5 years survival)

	Men		Women		ALL	
	<i>obs</i>	<i>rel</i>	<i>obs</i>	<i>rel</i>	<i>obs</i>	<i>rel</i>
1 year	83	88	-	-	83	88
3 years	58	69	-	-	58	69
5 years	44	61	-	-	44	61
95% CI	(40-49)	(55-67)	-	-	(40-49)	(55-67)

MODENA - Incident cases 1990-'94

AGE CLASSES	Men
15-44	1
45-54	8
55-64	121
65-74	346
75+	365
ALL	841



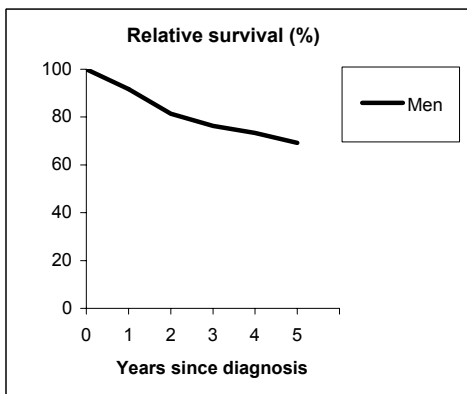
Observed and Relative survival (%)
(in parenthesis 95% confidence limits of 5 years survival)

	Men		Women		ALL	
	<i>obs</i>	<i>rel</i>	<i>obs</i>	<i>rel</i>	<i>obs</i>	<i>rel</i>
1 year	86	90	-	-	86	90
3 years	66	77	-	-	66	77
5 years	54	72	-	-	54	72
95% CI	(50-57)	(68-77)	-	-	(50-57)	(68-77)

PROSTATE (ICD-IX 185)

FERRARA - Incident cases 1990-'94

AGE CLASSES	Men
15-44	0
45-54	4
55-64	67
65-74	185
75+	188
ALL	444

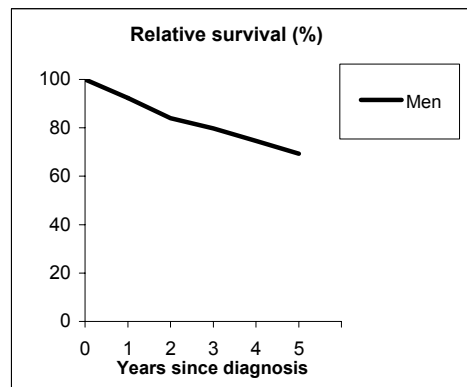


Observed and Relative survival (%)
(in parenthesis 95% confidence limits of 5 years survival)

	Men		Women		ALL	
	obs	rel	obs	rel	obs	rel
1 year	87	92	-	-	87	92
3 years	64	76	-	-	64	76
5 years	51	69	-	-	51	69
95% CI	(46-56)	(63-76)	-	-	(46-56)	(63-76)

ROMAGNA - Incident cases 1990-'94

AGE CLASSES	Men
15-44	0
45-54	19
55-64	105
65-74	278
75+	385
ALL	787



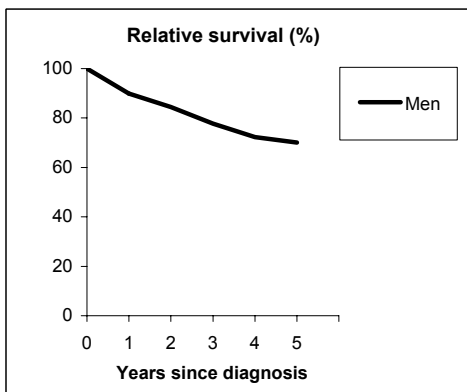
Observed and Relative survival (%)
(in parenthesis 95% confidence limits of 5 years survival)

	Men		Women		ALL	
	obs	rel	obs	rel	obs	rel
1 year	88	92	-	-	88	92
3 years	69	80	-	-	69	80
5 years	53	69	-	-	53	69
95% CI	(50-57)	(65-74)	-	-	(50-57)	(65-74)

PROSTATE (ICD-IX 185)

MACERATA - Incident cases 1991-'94

AGE CLASSES	Men
15-44	0
45-54	2
55-64	54
65-74	166
75+	198
ALL	420

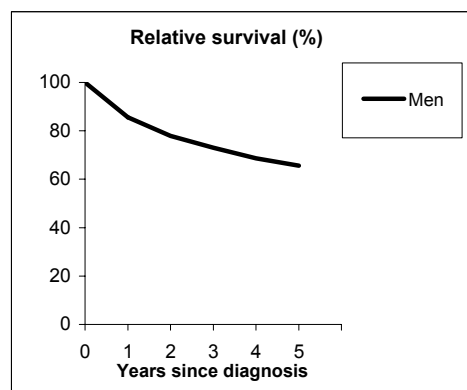


Observed and Relative survival (%)
(in parenthesis 95% confidence limits of 5 years survival)

	Men		Women		ALL	
	obs	rel	obs	rel	obs	rel
1 year	85	90	-	-	85	90
3 years	65	78	-	-	65	78
5 years	51	70	-	-	51	70
95% CI	(46-56)	(64-77)	-	-	(46-56)	(64-77)

FIRENZE-PRATO - Incident cases 1990-'94

AGE CLASSES	Men
15-44	1
45-54	27
55-64	227
65-74	691
75+	858
ALL	1,804



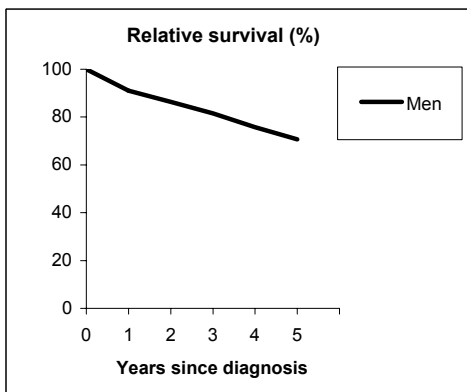
Observed and Relative survival (%)
(in parenthesis 95% confidence limits of 5 years survival)

	Men		Women		ALL	
	obs	rel	obs	rel	obs	rel
1 year	81	86	-	-	81	86
3 years	61	73	-	-	61	73
5 years	47	66	-	-	47	66
95% CI	(45-50)	(62-69)	-	-	(45-50)	(62-69)

PROSTATE (ICD-IX 185)

UMBRIA - Incident cases 1994-'96

AGE CLASSES	Men
15-44	0
45-54	13
55-64	121
65-74	474
75+	511
ALL	1,119

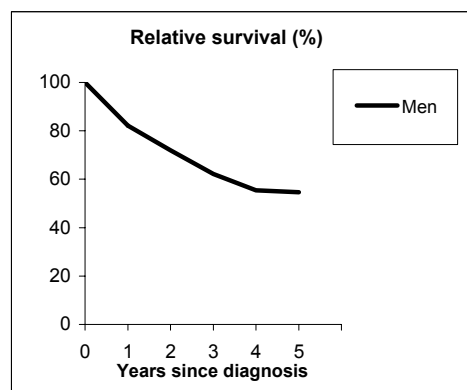


Observed and Relative survival (%)
(in parenthesis 95% confidence limits of 5 years survival)

	Men		Women		ALL	
	obs	rel	obs	rel	obs	rel
1 year	86	91	-	-	86	91
3 years	68	82	-	-	68	82
5 years	51	71	-	-	51	71
95% CI	(48-55)	(66-75)	-	-	(48-55)	(66-75)

LATINA - Incident cases 1990-'94

AGE CLASSES	Men
15-44	0
45-54	7
55-64	34
65-74	90
75+	79
ALL	210



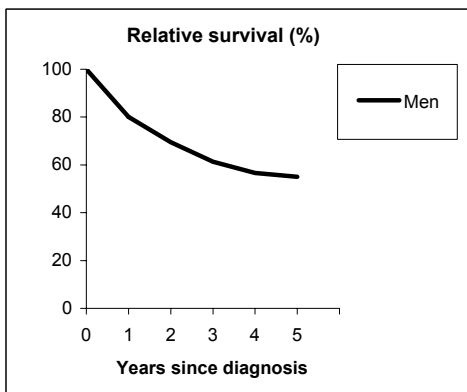
Observed and Relative survival (%)
(in parenthesis 95% confidence limits of 5 years survival)

	Men		Women		ALL	
	obs	rel	obs	rel	obs	rel
1 year	78	82	-	-	78	82
3 years	53	62	-	-	53	62
5 years	41	55	-	-	41	55
95% CI	(34-48)	(46-64)	-	-	(34-48)	(46-64)

PROSTATE (ICD-IX 185)

SASSARI - Incident cases 1992-'94

AGE CLASSES	Men
15-44	0
45-54	3
55-64	22
65-74	90
75+	99
ALL	214

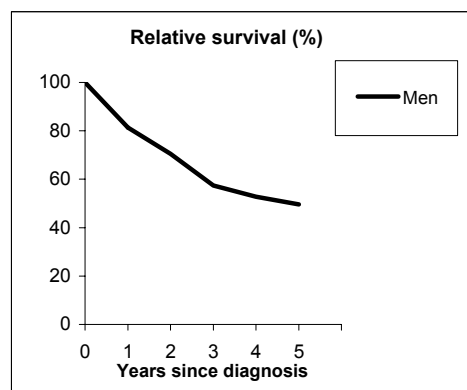


Observed and Relative survival (%)
(in parenthesis 95% confidence limits of 5 years survival)

	Men		Women		ALL	
	obs	rel	obs	rel	obs	rel
1 year	75	80	-	-	75	80
3 years	50	61	-	-	50	61
5 years	39	55	-	-	39	55
95% CI	(33-46)	(46-65)	-	-	(33-46)	(46-65)

RAGUSA - Incident cases 1990-'94

AGE CLASSES	Men
15-44	0
45-54	1
55-64	20
65-74	75
75+	130
ALL	226



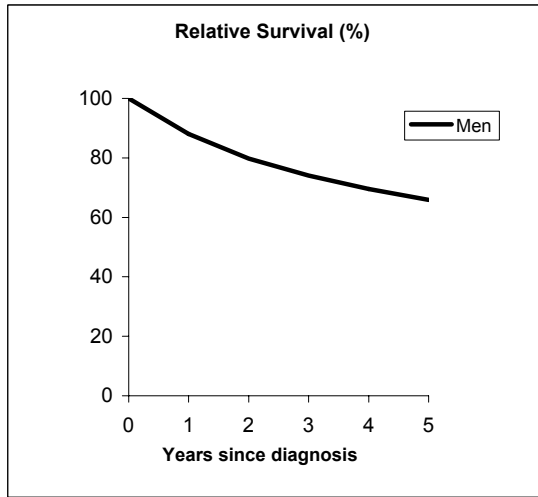
Observed and Relative survival (%)
(in parenthesis 95% confidence limits of 5 years survival)

	Men		Women		ALL	
	obs	rel	obs	rel	obs	rel
1 year	76	81	-	-	76	81
3 years	46	57	-	-	46	57
5 years	34	50	-	-	34	50
95% CI	(28-40)	(41-59)	-	-	(28-40)	(41-59)

PROSTATA (ICD-IX 185)

Pool of Italian Registries

REGISTRY	Men
Torino	1,030
Genova	1,123
Varese	895
Veneto	2,418
Parma	474
Modena	841
Ferrara	444
Romagna	787
Macerata	420
Firenze-Prato	1,804
Umbria	1,119
Latina	210
Sassari	214
Ragusa	226
Italy	12,005



Observed and relative survival (%) by sex and age classes

	15-44		45-54		55-64		65-74		75+		ALL	
	obs	rel	obs	rel	obs	rel	obs	rel	obs	rel	obs	rel
Men												
1 year	80	80	87	87	92	93	89	91	76	83	83	88
3 years	60	60	70	71	76	80	72	79	49	67	62	74
5 years	60	61	60	62	66	71	59	71	33	57	48	66
95% CI	(23-88)	(23-89)	(53-67)	(55-69)	(63-68)	(69-74)	(58-61)	(69-73)	(32-35)	(55-60)	(47-49)	(65-67)
Women												
1 year	-	-	-	-	-	-	-	-	-	-	-	-
3 years	-	-	-	-	-	-	-	-	-	-	-	-
5 years	-	-	-	-	-	-	-	-	-	-	-	-
95% CI	-	-	-	-	-	-	-	-	-	-	-	-
Total												
1 year	80	80	87	87	92	93	89	91	76	83	83	88
3 years	60	60	70	71	76	80	72	79	49	67	62	74
5 years	60	61	60	62	66	71	59	71	33	57	48	66
95% CI	(23-88)	(23-89)	(53-67)	(55-69)	(63-68)	(69-74)	(58-61)	(69-73)	(32-35)	(55-60)	(47-49)	(65-67)

Five Years Age-adjusted Relative Survival of 1986-89 and 1990-94 incident cases

