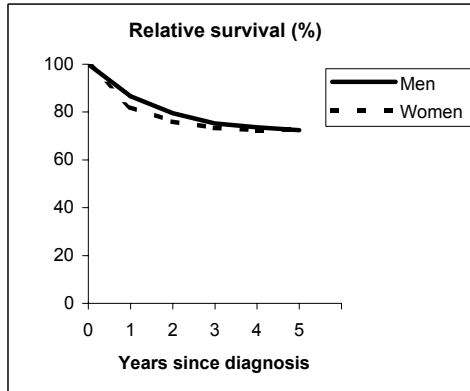


BLADDER (ICD-IX 188)

TORINO - Incident cases 1990-'94

AGE CLASSES	Men	Women
15-44	34	5
45-54	105	19
55-64	291	47
65-74	367	69
75+	266	119
ALL	1,063	259

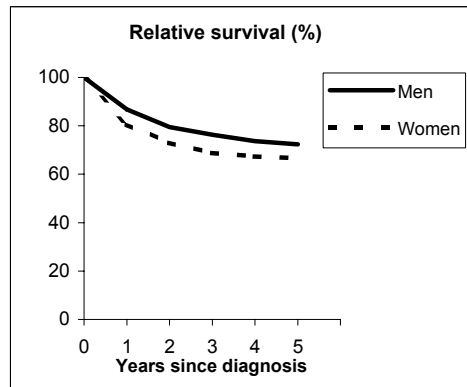


Observed and Relative survival (%)
(in parenthesis 95% confidence limits of 5 years survival)

	Men		Women		ALL	
	obs	rel	obs	rel	obs	rel
1 year	83	87	79	82	83	86
3 years	67	75	66	73	66	75
5 years	59	72	60	73	59	72
95% CI	(56-62)	(69-76)	(54-66)	(65-80)	(56-62)	(69-76)

GENOVA - Incident cases 1990-'94

AGE CLASSES	Men	Women
15-44	33	12
45-54	113	9
55-64	262	47
65-74	418	90
75+	319	137
ALL	1,145	295



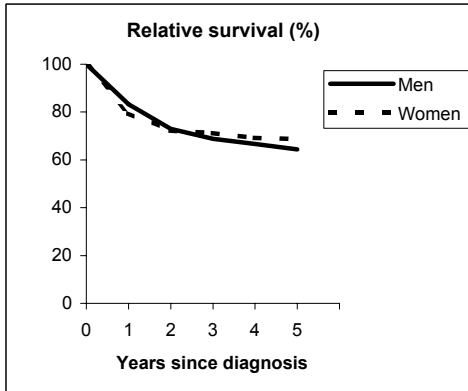
Observed and Relative survival (%)
(in parenthesis 95% confidence limits of 5 years survival)

	Men		Women		ALL	
	obs	rel	obs	rel	obs	rel
1 year	83	87	77	81	82	85
3 years	67	76	60	69	66	75
5 years	58	72	53	67	57	71
95% CI	(55-61)	(69-76)	(47-59)	(59-74)	(54-59)	(68-74)

BLADDER (ICD-IX 188)

VARESE - Incident cases 1990-'94

AGE CLASSES	Men	Women
15-44	15	4
45-54	53	6
55-64	160	24
65-74	259	38
75+	187	74
ALL	674	146

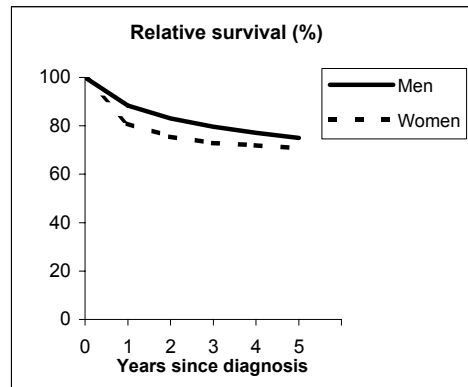


Observed and Relative survival (%)
(in parenthesis 95% confidence limits of 5 years survival)

	Men		Women		ALL	
	obs	rel	obs	rel	obs	rel
1 year	80	83	76	80	79	83
3 years	60	69	62	71	60	69
5 years	50	64	53	69	51	65
95% CI	(47-54)	(60-69)	(45-61)	(58-79)	(48-54)	(61-70)

VENETO - Incident cases 1990-'94

AGE CLASSES	Men	Women
15-44	72	16
45-54	181	44
55-64	528	110
65-74	843	204
75+	681	252
ALL	2,305	626



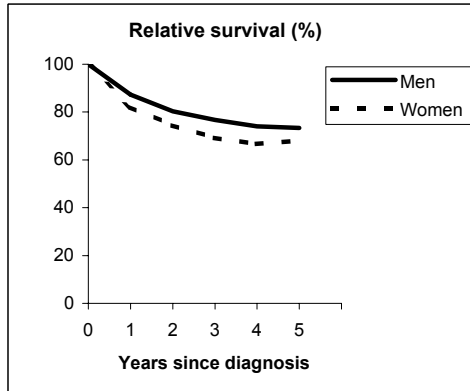
Observed and Relative survival (%)
(in parenthesis 95% confidence limits of 5 years survival)

	Men		Women		ALL	
	obs	rel	obs	rel	obs	rel
1 year	85	88	78	81	83	87
3 years	70	80	65	73	69	78
5 years	59	75	58	71	59	74
95% CI	(57-61)	(72-78)	(55-62)	(66-75)	(57-61)	(72-76)

BLADDER (ICD-IX 188)

PARMA - Incident cases 1990-'94

AGE CLASSES	Men	Women
15-44	9	2
45-54	33	4
55-64	139	31
65-74	204	49
75+	192	63
ALL	577	149

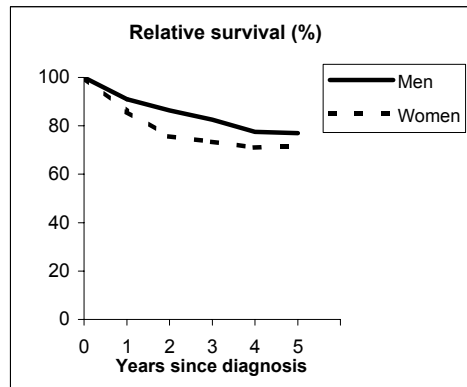


Observed and Relative survival (%)
(in parenthesis 95% confidence limits of 5 years survival)

	Men		Women		ALL	
	<i>obs</i>	<i>rel</i>	<i>obs</i>	<i>rel</i>	<i>obs</i>	<i>rel</i>
1 year	84	87	79	82	83	86
3 years	67	77	62	69	66	75
5 years	58	73	56	68	57	72
95% CI	(53-61)	(68-78)	(48-63)	(58-78)	(54-61)	(68-77)

MODENA - Incident cases 1990-'94

AGE CLASSES	Men	Women
15-44	21	8
45-54	64	17
55-64	216	41
65-74	315	60
75+	190	81
ALL	806	207



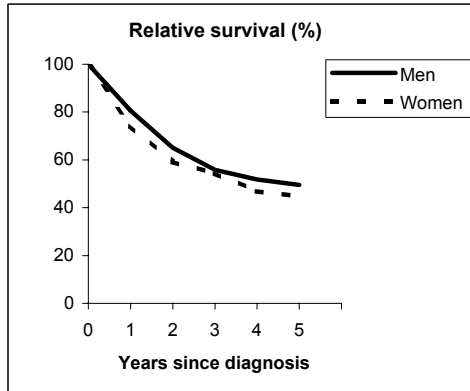
Observed and Relative survival (%)
(in parenthesis 95% confidence limits of 5 years survival)

	Men		Women		ALL	
	<i>obs</i>	<i>rel</i>	<i>obs</i>	<i>rel</i>	<i>obs</i>	<i>rel</i>
1 year	88	91	83	86	87	90
3 years	74	83	67	73	72	81
5 years	63	77	60	71	63	76
95% CI	(60-67)	(73-81)	(53-67)	(63-79)	(60-66)	(72-79)

BLADDER (ICD-IX 188)

FERRARA - Incident cases 1990-'94

AGE CLASSES	Men	Women
15-44	6	0
45-54	11	1
55-64	72	6
65-74	126	22
75+	109	31
ALL	324	60

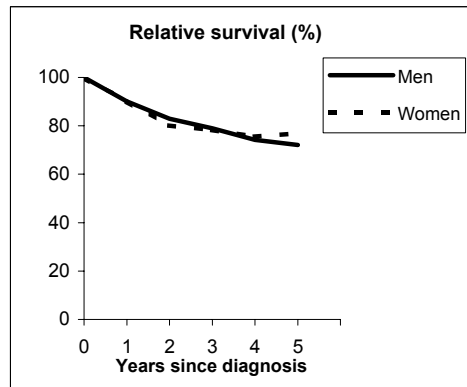


Observed and Relative survival (%)
(in parenthesis 95% confidence limits of 5 years survival)

	Men		Women		ALL	
	<i>obs</i>	<i>rel</i>	<i>obs</i>	<i>rel</i>	<i>obs</i>	<i>rel</i>
1 year	77	81	71	74	76	80
3 years	48	56	48	54	48	56
5 years	38	50	36	45	37	49
95% CI	(32-43)	(43-57)	(25-48)	(31-61)	(33-42)	(43-55)

ROMAGNA - Incident cases 1990-'94

AGE CLASSES	Men	Women
15-44	6	4
45-54	50	9
55-64	151	32
65-74	233	39
75+	203	53
ALL	643	137



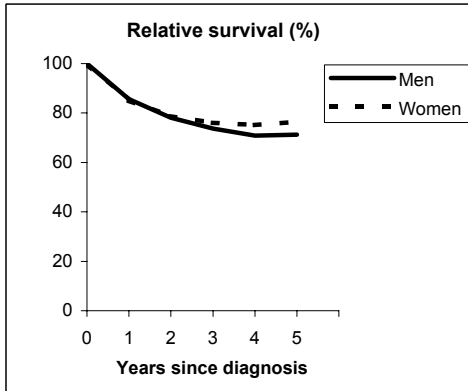
Observed and Relative survival (%)
(in parenthesis 95% confidence limits of 5 years survival)

	Men		Women		ALL	
	<i>obs</i>	<i>rel</i>	<i>obs</i>	<i>rel</i>	<i>obs</i>	<i>rel</i>
1 year	87	90	88	90	87	90
3 years	71	79	73	78	72	79
5 years	60	72	68	77	61	73
95% CI	(56-64)	(67-77)	(60-75)	(68-85)	(58-65)	(69-77)

BLADDER (ICD-IX 188)

MACERATA - Incident cases 1991-'94

AGE CLASSES	Men	Women
15-44	4	3
45-54	10	6
55-64	77	3
65-74	121	19
75+	88	25
ALL	300	56

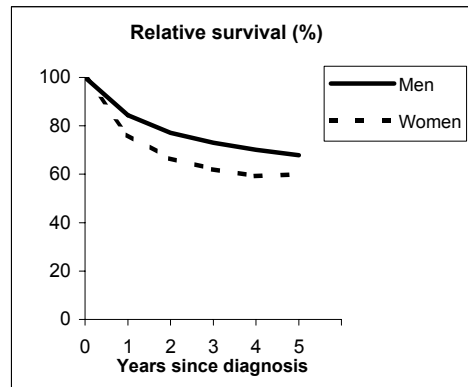


Observed and Relative survival (%)
(in parenthesis 95% confidence limits of 5 years survival)

	Men		Women		ALL	
	<i>obs</i>	<i>rel</i>	<i>obs</i>	<i>rel</i>	<i>obs</i>	<i>rel</i>
1 year	82	86	82	85	82	86
3 years	65	74	68	76	65	74
5 years	57	71	63	76	58	72
95% CI	(51-62)	(64-78)	(49-74)	(60-90)	(53-63)	(66-78)

FIRENZE-PRATO - Incident cases 1990-'94

AGE CLASSES	Men	Women
15-44	20	7
45-54	115	22
55-64	268	37
65-74	427	84
75+	408	155
ALL	1,238	305



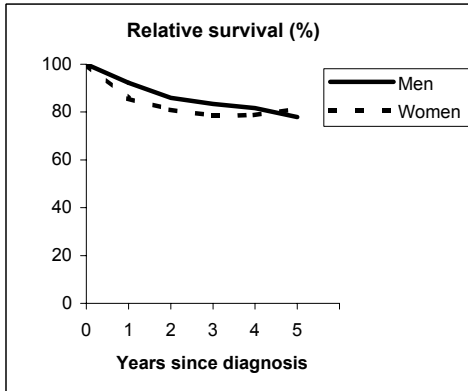
Observed and Relative survival (%)
(in parenthesis 95% confidence limits of 5 years survival)

	Men		Women		ALL	
	<i>obs</i>	<i>rel</i>	<i>obs</i>	<i>rel</i>	<i>obs</i>	<i>rel</i>
1 year	81	84	73	76	79	83
3 years	64	73	54	62	62	71
5 years	53	68	47	60	52	66
95% CI	(51-56)	(64-71)	(41-53)	(53-67)	(50-55)	(63-69)

BLADDER (ICD-IX 188)

UMBRIA - Incident cases 1994-'96

AGE CLASSES	Men	Women
15-44	24	12
45-54	49	14
55-64	137	38
65-74	306	53
75+	242	75
ALL	758	192

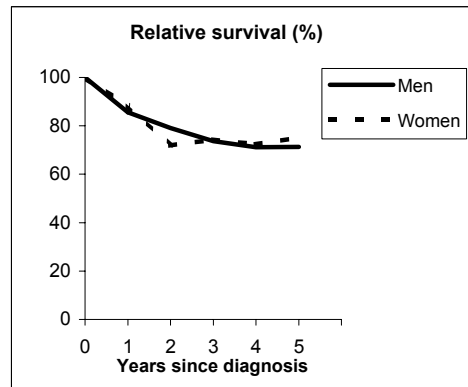


Observed and Relative survival (%)
(in parenthesis 95% confidence limits of 5 years survival)

	Men		Women		ALL	
	<i>obs</i>	<i>rel</i>	<i>obs</i>	<i>rel</i>	<i>obs</i>	<i>rel</i>
1 year	89	92	83	86	87	91
3 years	73	83	70	78	73	82
5 years	62	78	67	81	63	79
95% CI	(58-66)	(73-83)	(60-73)	(73-89)	(59-66)	(74-83)

LATINA - Incident cases 1990-'94

AGE CLASSES	Men	Women
15-44	6	2
45-54	26	4
55-64	81	11
65-74	118	16
75+	96	16
ALL	327	49



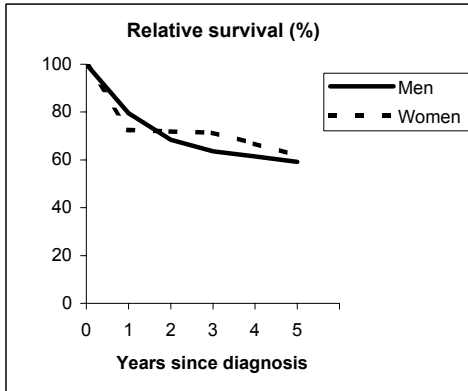
Observed and Relative survival (%)
(in parenthesis 95% confidence limits of 5 years survival)

	Men		Women		ALL	
	<i>obs</i>	<i>rel</i>	<i>obs</i>	<i>rel</i>	<i>obs</i>	<i>rel</i>
1 year	82	86	86	88	83	86
3 years	65	74	67	74	65	74
5 years	57	71	63	75	58	72
95% CI	(51-62)	(65-78)	(49-75)	(59-89)	(53-63)	(66-78)

BLADDER (ICD-IX 188)

SASSARI - Incident cases 1992-'94

AGE CLASSES	Men	Women
15-44	5	1
45-54	11	2
55-64	54	1
65-74	69	14
75+	48	12
ALL	187	30

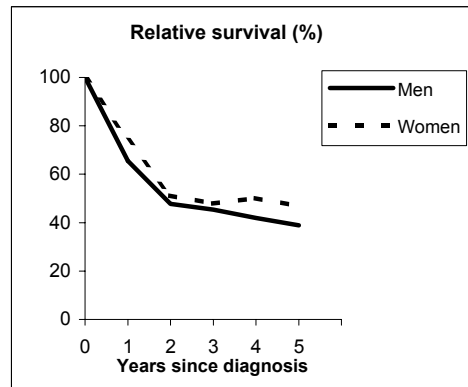


Observed and Relative survival (%)
(in parenthesis 95% confidence limits of 5 years survival)

	Men		Women		ALL	
	obs	rel	obs	rel	obs	rel
1 year	76	80	70	73	76	79
3 years	56	64	63	71	57	65
5 years	47	59	50	62	48	60
95% CI	(40-55)	(50-68)	(33-67)	(41-83)	(41-54)	(51-68)

RAGUSA - Incident cases 1990-'94

AGE CLASSES	Men	Women
15-44	1	2
45-54	13	1
55-64	25	1
65-74	42	8
75+	60	9
ALL	141	21



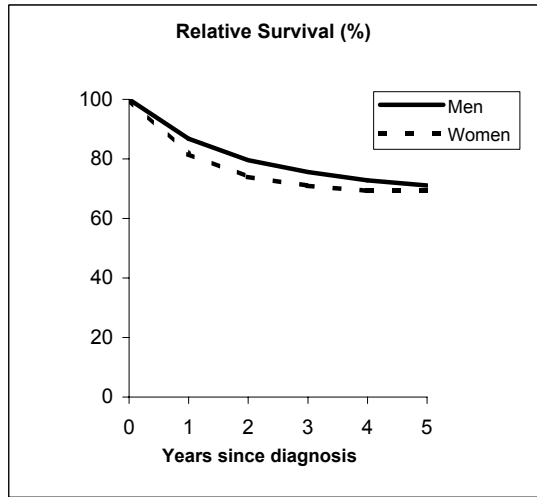
Observed and Relative survival (%)
(in parenthesis 95% confidence limits of 5 years survival)

	Men		Women		ALL	
	obs	rel	obs	rel	obs	rel
1 year	62	66	71	74	64	67
3 years	39	45	43	48	40	46
5 years	30	39	38	47	31	40
95% CI	(23-38)	(30-49)	(21-59)	(26-73)	(24-38)	(31-50)

BLADDER (ICD-IX 188)

Pool of Italian Registries

REGISTRY	Number of cases		
	Men	Women	Total
Torino	1,063	259	1,322
Genova	1,145	295	1,440
Varese	674	146	820
Veneto	2,305	626	2,931
Parma	577	149	726
Modena	806	207	1,013
Ferrara	324	60	384
Romagna	643	137	780
Macerata	300	56	356
Firenze-Prato	1,237	305	1,542
Umbria	757	192	949
Latina	327	49	376
Sassari	187	30	217
Ragusa	141	21	162
Italy	10,488	2,532	13,020



Observed and relative survival (%) by sex and age classes

	15-44		45-54		55-64		65-74		75+		ALL	
	obs	rel	obs	rel	obs	rel	obs	rel	obs	rel	obs	rel
Men												
1 year	96	97	94	94	91	92	86	88	70	77	83	87
3 years	91	91	86	87	80	83	69	76	46	61	67	76
5 years	90	91	81	83	73	79	58	69	33	56	57	71
95% CI	(86-93)	(87-94)	(78-84)	(80-86)	(72-75)	(77-81)	(56-60)	(67-71)	(31-34)	(53-58)	(56-58)	(70-72)
Women												
1 year	99	99	95	95	92	92	86	88	65	69	79	82
3 years	92	93	90	90	85	86	73	76	43	54	63	71
5 years	92	93	84	85	81	83	67	74	34	51	57	69
95% CI	(84-96)	(85-97)	(77-89)	(78-90)	(77-84)	(79-87)	(64-70)	(70-77)	(31-36)	(47-55)	(55-59)	(67-72)
Total												
1 year	97	97	94	94	91	92	86	88	69	75	82	86
3 years	91	91	86	87	81	84	70	76	45	59	66	75
5 years	91	91	81	84	75	80	60	70	33	54	57	71
95% CI	(87-93)	(88-94)	(79-84)	(81-86)	(73-76)	(78-82)	(58-61)	(68-72)	(32-34)	(52-57)	(56-58)	(70-72)

Five Years Age-adjusted Relative Survival of 1986-89 and 1990-94 incident cases

Men and Women

