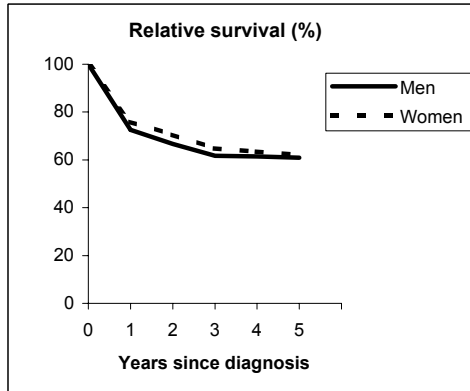


KIDNEY (ICD-IX 189)

TORINO - Incident cases 1990-'94

AGE CLASSES	Men	Women
15-44	15	9
45-54	55	25
55-64	96	38
65-74	123	51
75+	64	52
ALL	353	175

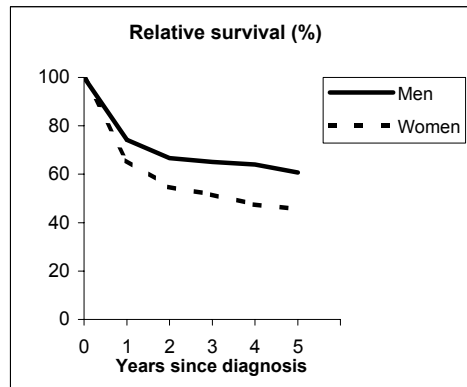


Observed and Relative survival (%)
(in parenthesis 95% confidence limits of 5 years survival)

	Men		Women		ALL	
	obs	rel	obs	rel	obs	rel
1 year	70	73	74	76	72	74
3 years	56	62	60	65	57	63
5 years	51	61	54	62	52	61
95% CI	(46-56)	(55-67)	(47-62)	(54-70)	(48-57)	(56-66)

GENOVA - Incident cases 1990-'94

AGE CLASSES	Men	Women
15-44	10	6
45-54	36	12
55-64	110	34
65-74	108	46
75+	64	69
ALL	328	167



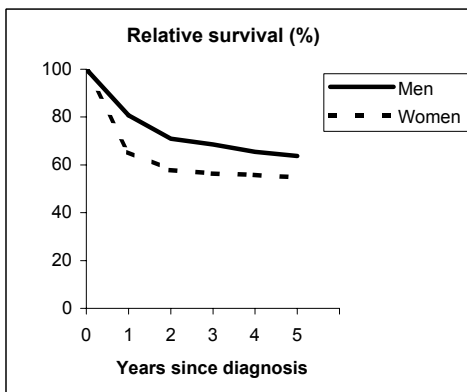
Observed and Relative survival (%)
(in parenthesis 95% confidence limits of 5 years survival)

	Men		Women		ALL	
	obs	rel	obs	rel	obs	rel
1 year	72	74	63	66	69	71
3 years	59	65	46	52	55	61
5 years	51	61	37	46	46	56
95% CI	(45-56)	(54-67)	(30-45)	(37-55)	(42-51)	(50-61)

KIDNEY (ICD-IX 189)

VARESE - Incident cases 1990-'94

AGE CLASSES	Men	Women
15-44	20	9
45-54	43	17
55-64	113	47
65-74	112	49
75+	68	67
ALL	356	189

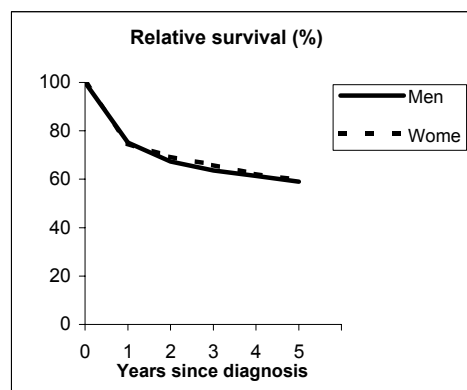


Observed and Relative survival (%)
(in parenthesis 95% confidence limits of 5 years survival)

	Men		Women		ALL	
	<i>obs</i>	<i>rel</i>	<i>obs</i>	<i>rel</i>	<i>obs</i>	<i>rel</i>
1 year	78	81	63	65	73	75
3 years	62	69	51	56	58	64
5 years	53	64	47	55	51	61
95% CI	(48-58)	(58-70)	(40-54)	(47-63)	(47-55)	(56-66)

VENETO - Incident cases 1990-'94

AGE CLASSES	Men	Women
15-44	66	28
45-54	151	53
55-64	279	133
65-74	340	161
75+	248	178
ALL	1,084	553



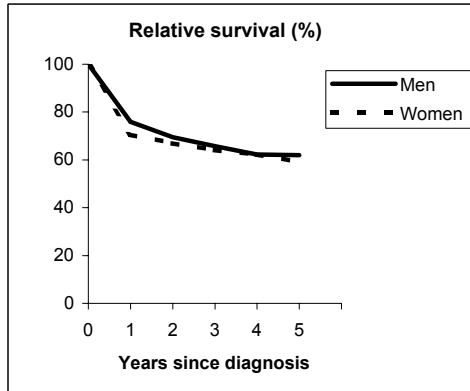
Observed and Relative survival (%)
(in parenthesis 95% confidence limits of 5 years survival)

	Men		Women		ALL	
	<i>obs</i>	<i>rel</i>	<i>obs</i>	<i>rel</i>	<i>obs</i>	<i>rel</i>
1 year	73	75	73	75	73	75
3 years	57	64	61	66	58	64
5 years	49	59	52	60	50	59
95% CI	(46-52)	(55-63)	(47-56)	(55-65)	(47-52)	(56-62)

KIDNEY (ICD-IX 189)

PARMA - Incident cases 1990-'94

AGE CLASSES	Men	Women
15-44	7	7
45-54	29	13
55-64	72	24
65-74	62	24
75+	46	40
ALL	216	108

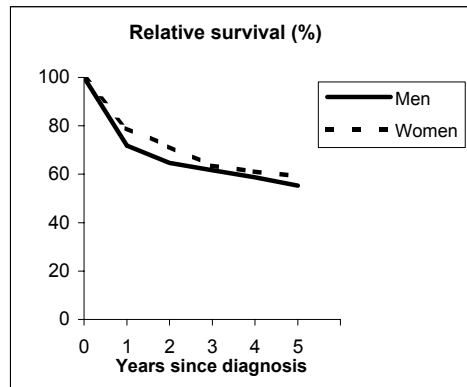


Observed and Relative survival (%)
(in parenthesis 95% confidence limits of 5 years survival)

	Men		Women		ALL	
	obs	rel	obs	rel	obs	rel
1 year	74	76	69	71	72	74
3 years	60	66	58	64	59	65
5 years	52	62	50	59	52	61
95% CI	(46-59)	(54-70)	(41-59)	(48-70)	(46-57)	(55-67)

MODENA - Incident cases 1990-'94

AGE CLASSES	Men	Women
15-44	14	15
45-54	31	25
55-64	97	40
65-74	118	51
75+	83	39
ALL	343	170



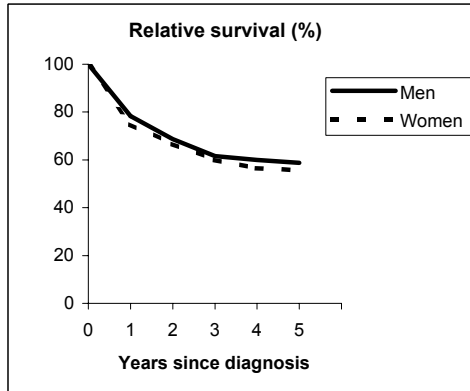
Observed and Relative survival (%)
(in parenthesis 95% confidence limits of 5 years survival)

	Men		Women		ALL	
	obs	rel	obs	rel	obs	rel
1 year	69	72	78	79	72	74
3 years	55	62	60	63	57	62
5 years	45	55	53	59	48	57
95% CI	(40-51)	(49-62)	(45-60)	(51-67)	(44-52)	(52-62)

KIDNEY (ICD-IX 189)

FERRARA - Incident cases 1990-'94

AGE CLASSES	Men	Women
15-44	11	4
45-54	24	9
55-64	65	24
65-74	77	35
75+	59	49
ALL	236	121

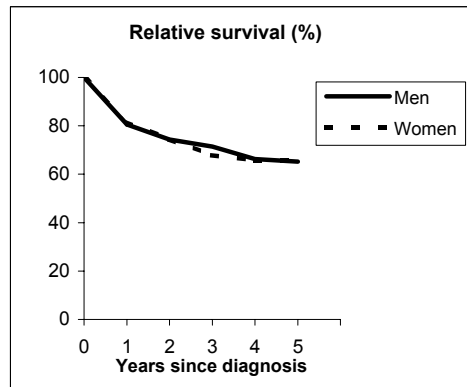


Observed and Relative survival (%)
(in parenthesis 95% confidence limits of 5 years survival)

	Men		Women		ALL	
	obs	rel	obs	rel	obs	rel
1 year	75	78	72	75	74	77
3 years	54	62	54	60	54	61
5 years	47	59	46	56	47	58
95% CI	(41-54)	(51-67)	(37-55)	(45-67)	(42-52)	(51-64)

ROMAGNA - Incident cases 1990-'94

AGE CLASSES	Men	Women
15-44	16	7
45-54	26	11
55-64	75	35
65-74	81	38
75+	71	50
ALL	269	141



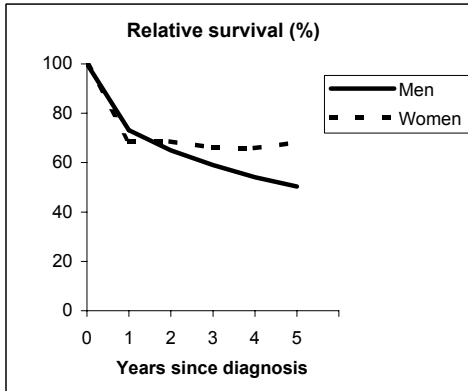
Observed and Relative survival (%)
(in parenthesis 95% confidence limits of 5 years survival)

	Men		Women		ALL	
	obs	rel	obs	rel	obs	rel
1 year	78	81	80	82	79	81
3 years	65	71	64	68	65	70
5 years	56	65	59	66	57	65
95% CI	(50-62)	(58-72)	(50-67)	(56-75)	(52-62)	(60-71)

KIDNEY (ICD-IX 189)

MACERATA - Incident cases 1991-'94

AGE CLASSES	Men	Women
15-44	5	1
45-54	2	4
55-64	20	7
65-74	28	19
75+	23	14
ALL	78	45

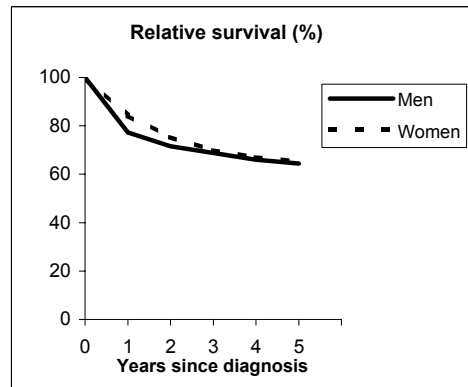


Observed and Relative survival (%)
(in parenthesis 95% confidence limits of 5 years survival)

	Men		Women		ALL	
	<i>obs</i>	<i>rel</i>	<i>obs</i>	<i>rel</i>	<i>obs</i>	<i>rel</i>
1 year	71	73	67	69	69	72
3 years	53	59	60	66	55	62
5 years	41	50	58	68	47	57
95% CI	(31-52)	(38-64)	(43-71)	(51-84)	(39-56)	(47-68)

FIRENZE-PRATO - Incident cases 1990-'94

AGE CLASSES	Men	Women
15-44	37	22
45-54	95	38
55-64	184	77
65-74	231	123
75+	167	106
ALL	714	366



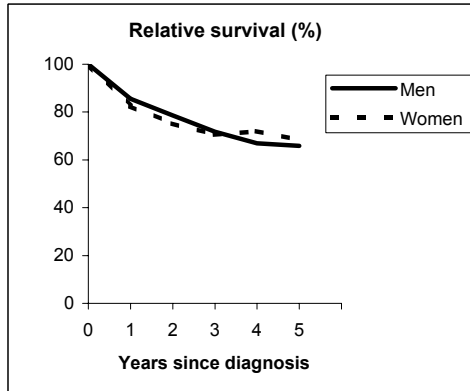
Observed and Relative survival (%)
(in parenthesis 95% confidence limits of 5 years survival)

	Men		Women		ALL	
	<i>obs</i>	<i>rel</i>	<i>obs</i>	<i>rel</i>	<i>obs</i>	<i>rel</i>
1 year	75	77	82	84	77	80
3 years	62	69	65	70	63	69
5 years	54	64	57	65	55	65
95% CI	(50-57)	(60-69)	(52-62)	(59-71)	(52-58)	(61-68)

KIDNEY (ICD-IX 189)

UMBRIA - Incident cases 1994-'96

AGE CLASSES	Men	Women
15-44	19	7
45-54	26	19
55-64	82	31
65-74	128	44
75+	69	50
ALL	324	151

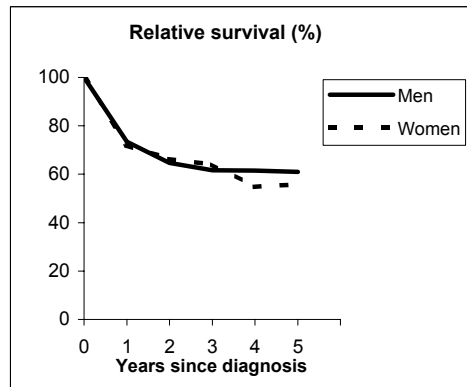


Observed and Relative survival (%)
(in parenthesis 95% confidence limits of 5 years survival)

	Men		Women		ALL	
	<i>obs</i>	<i>rel</i>	<i>obs</i>	<i>rel</i>	<i>obs</i>	<i>rel</i>
1 year	83	86	80	82	82	85
3 years	65	72	64	71	65	71
5 years	55	66	58	68	56	67
95% CI	(50-61)	(59-73)	(49-66)	(58-78)	(51-61)	(61-72)

LATINA - Incident cases 1990-'94

AGE CLASSES	Men	Women
15-44	6	3
45-54	18	8
55-64	22	11
65-74	22	4
75+	4	5
ALL	72	31



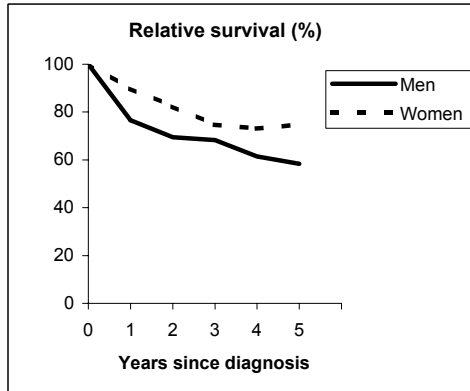
Observed and Relative survival (%)
(in parenthesis 95% confidence limits of 5 years survival)

	Men		Women		ALL	
	<i>obs</i>	<i>rel</i>	<i>obs</i>	<i>rel</i>	<i>obs</i>	<i>rel</i>
1 year	72	73	71	72	72	73
3 years	58	62	61	64	59	62
5 years	55	61	52	56	54	59
95% CI	(44-66)	(48-73)	(35-68)	(38-74)	(45-63)	(49-70)

KIDNEY (ICD-IX 189)

SASSARI - Incident cases 1992-'94

AGE CLASSES	Men	Women
15-44	4	2
45-54	16	6
55-64	25	10
65-74	24	11
75+	20	5
ALL	89	34



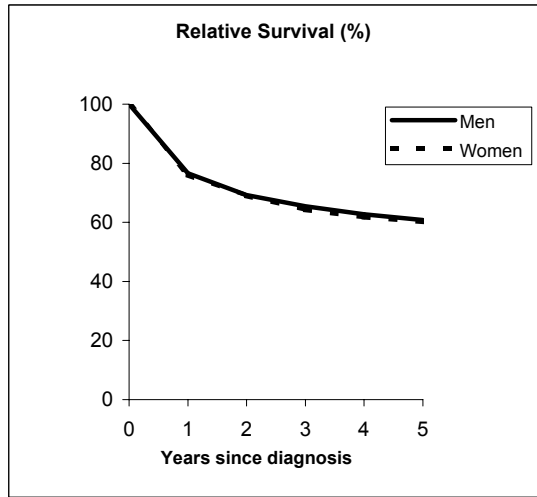
Observed and Relative survival (%)
(in parenthesis 95% confidence limits of 5 years survival)

	<i>Men</i>		<i>Women</i>		ALL	
	<i>obs</i>	<i>rel</i>	<i>obs</i>	<i>rel</i>	<i>obs</i>	<i>rel</i>
1 year	74	77	88	90	78	80
3 years	62	68	71	75	64	70
5 years	49	58	68	75	54	63
95% CI	(39-59)	(46-71)	(51-81)	(56-89)	(45-63)	(53-73)

KIDNEY (ICD-IX 189)

Pool of Italian Registries

REGISTRY	Number of cases		
	Men	Women	Total
Torino	353	175	528
Genova	328	167	495
Varese	356	189	545
Veneto	1,084	553	1,637
Parma	216	108	324
Modena	343	170	513
Ferrara	236	121	357
Romagna	269	141	410
Macerata	78	45	123
Firenze-Prato	714	366	1,080
Umbria	324	151	475
Latina	72	31	103
Sassari	89	34	123
Ragusa	51	33	84
Italy	4,513	2,284	6,797



Observed and relative survival (%) by sex and age classes

	15-44		45-54		55-64		65-74		75+		ALL	
	obs	rel	obs	rel	obs	rel	obs	rel	obs	rel	obs	rel
Men												
1 year	90	90	82	83	81	82	73	75	59	65	74	77
3 years	81	81	73	74	67	70	58	64	38	50	59	65
5 years	76	77	69	71	59	64	49	58	27	45	51	61
95% CI	(70-81)	(71-82)	(65-73)	(67-75)	(56-62)	(61-67)	(46-51)	(55-61)	(24-30)	(41-50)	(49-52)	(59-63)
Women												
1 year	91	91	84	84	83	83	76	77	60	64	74	76
3 years	79	79	74	74	71	72	62	65	41	50	59	64
5 years	76	76	70	71	66	68	54	59	31	45	52	60
95% CI	(67-82)	(68-83)	(64-76)	(65-77)	(61-70)	(63-72)	(50-57)	(54-63)	(28-35)	(40-50)	(50-54)	(58-63)
Total												
1 year	90	91	83	83	81	82	74	76	60	65	74	76
3 years	80	80	73	74	68	71	59	64	39	50	59	65
5 years	76	76	69	71	61	65	50	58	29	45	51	61
95% CI	(71-80)	(72-81)	(66-73)	(68-74)	(59-63)	(62-67)	(48-52)	(56-61)	(27-31)	(42-49)	(50-52)	(59-62)

Five Years Age-adjusted Relative Survival of 1986-89 and 1990-94 incident cases

Men and Women

