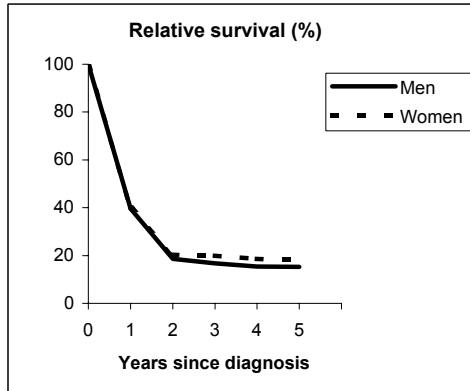


BRAIN (ICD-IX 191)

TORINO - Incident cases 1990-'94

AGE CLASSES	Men	Women
15-44	29	17
45-54	27	18
55-64	62	32
65-74	45	48
75+	23	22
ALL	186	137

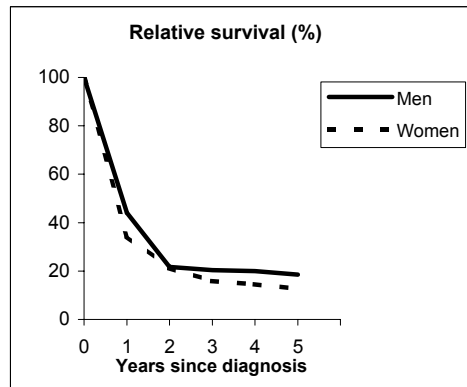


Observed and Relative survival (%)
(in parenthesis 95% confidence limits of 5 years survival)

	Men		Women		ALL	
	<i>obs</i>	<i>rel</i>	<i>obs</i>	<i>rel</i>	<i>obs</i>	<i>rel</i>
1 year	39	40	39	40	39	40
3 years	16	17	19	20	17	18
5 years	13	15	17	18	15	16
95% CI	(9-19)	(11-22)	(11-24)	(12-26)	(11-19)	(13-21)

GENOVA - Incident cases 1990-'94

AGE CLASSES	Men	Women
15-44	22	18
45-54	18	11
55-64	26	23
65-74	38	42
75+	12	33
ALL	116	127



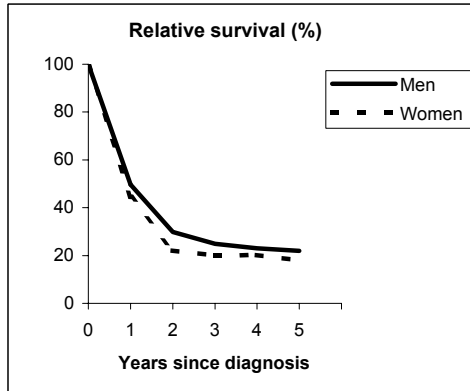
Observed and Relative survival (%)
(in parenthesis 95% confidence limits of 5 years survival)

	Men		Women		ALL	
	<i>obs</i>	<i>rel</i>	<i>obs</i>	<i>rel</i>	<i>obs</i>	<i>rel</i>
1 year	43	44	34	35	38	39
3 years	19	20	15	16	17	18
5 years	16	19	11	13	14	16
95% CI	(11-24)	(12-27)	(7-18)	(8-20)	(10-19)	(11-21)

BRAIN (ICD-IX 191)

VARESE - Incident cases 1990-'94

AGE CLASSES	Men	Women
15-44	28	21
45-54	23	28
55-64	40	21
65-74	23	30
75+	20	21
ALL	134	121

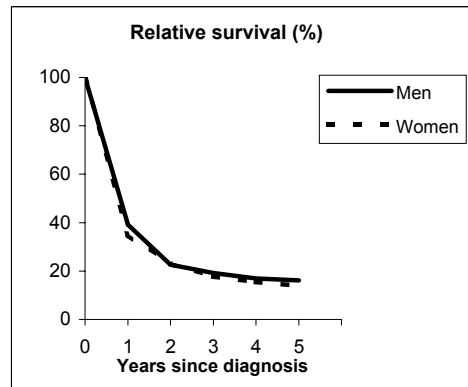


Observed and Relative survival (%)
(in parenthesis 95% confidence limits of 5 years survival)

	Men		Women		ALL	
	<i>obs</i>	<i>rel</i>	<i>obs</i>	<i>rel</i>	<i>obs</i>	<i>rel</i>
1 year	49	50	44	44	46	47
3 years	23	25	19	20	21	22
5 years	19	22	17	18	18	20
95% CI	(13-27)	(15-31)	(11-24)	(12-26)	(14-23)	(15-26)

VENETO - Incident cases 1990-'94

AGE CLASSES	Men	Women
15-44	96	69
45-54	49	33
55-64	94	67
65-74	96	104
75+	38	62
ALL	373	335



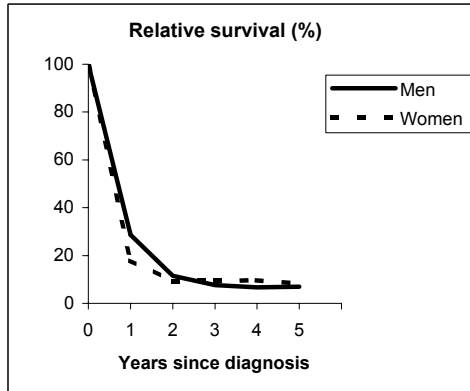
Observed and Relative survival (%)
(in parenthesis 95% confidence limits of 5 years survival)

	Men		Women		ALL	
	<i>obs</i>	<i>rel</i>	<i>obs</i>	<i>rel</i>	<i>obs</i>	<i>rel</i>
1 year	38	39	35	35	37	37
3 years	18	19	17	18	17	18
5 years	14	16	13	14	14	15
95% CI	(11-18)	(13-21)	(10-17)	(10-18)	(11-16)	(12-18)

BRAIN (ICD-IX 191)

PARMA - Incident cases 1990-'94

AGE CLASSES	Men	Women
15-44	16	3
45-54	11	7
55-64	26	18
65-74	31	21
75+	16	19
ALL	100	68

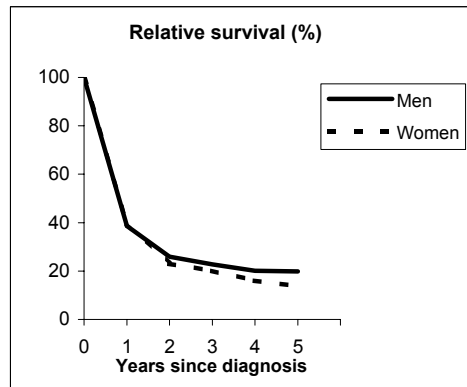


Observed and Relative survival (%)
(in parenthesis 95% confidence limits of 5 years survival)

	Men		Women		ALL	
	<i>obs</i>	<i>rel</i>	<i>obs</i>	<i>rel</i>	<i>obs</i>	<i>rel</i>
1 year	28	29	18	18	24	24
3 years	7	8	9	9	8	8
5 years	6	7	7	8	7	7
95% CI	(3-12)	(3-14)	(3-16)	(4-18)	(4-11)	(4-13)

MODENA - Incident cases 1990-'94

AGE CLASSES	Men	Women
15-44	24	13
45-54	29	14
55-64	33	25
65-74	31	26
75+	22	20
ALL	139	98



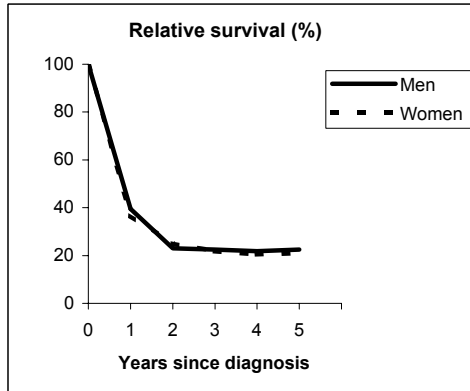
Observed and Relative survival (%)
(in parenthesis 95% confidence limits of 5 years survival)

	Men		Women		ALL	
	<i>obs</i>	<i>rel</i>	<i>obs</i>	<i>rel</i>	<i>obs</i>	<i>rel</i>
1 year	38	39	39	40	38	39
3 years	21	23	19	20	20	22
5 years	17	20	13	14	15	17
95% CI	(12-25)	(14-28)	(7-21)	(8-23)	(11-21)	(13-23)

BRAIN (ICD-IX 191)

FERRARA - Incident cases 1990-'94

AGE CLASSES	Men	Women
15-44	13	6
45-54	11	9
55-64	16	11
65-74	23	18
75+	16	15
ALL	79	59

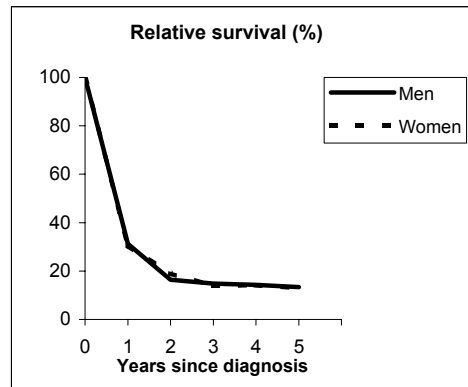


Observed and Relative survival (%)
(in parenthesis 95% confidence limits of 5 years survival)

	Men		Women		ALL	
	<i>obs</i>	<i>rel</i>	<i>obs</i>	<i>rel</i>	<i>obs</i>	<i>rel</i>
1 year	38	40	36	37	38	38
3 years	21	22	21	22	21	22
5 years	19	23	19	21	19	22
95% CI	(12-29)	(14-34)	(11-31)	(12-34)	(13-27)	(15-30)

ROMAGNA - Incident cases 1990-'94

AGE CLASSES	Men	Women
15-44	16	6
45-54	16	14
55-64	19	17
65-74	32	16
75+	25	23
ALL	108	76



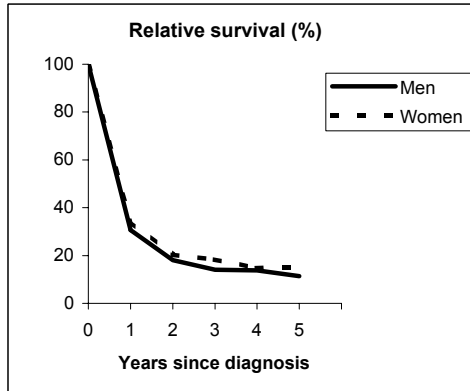
Observed and Relative survival (%)
(in parenthesis 95% confidence limits of 5 years survival)

	Men		Women		ALL	
	<i>obs</i>	<i>rel</i>	<i>obs</i>	<i>rel</i>	<i>obs</i>	<i>rel</i>
1 year	31	31	30	31	30	31
3 years	14	15	13	14	14	14
5 years	12	13	12	13	12	13
95% CI	(7-19)	(8-22)	(6-21)	(7-23)	(8-17)	(9-19)

BRAIN (ICD-IX 191)

FIRENZE-PRATO - Incident cases 1990-'94

AGE CLASSES	Men	Women
15-44	35	29
45-54	31	32
55-64	56	48
65-74	47	51
75+	23	55
ALL	192	215

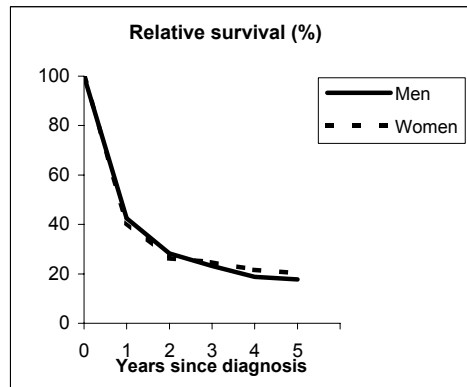


Observed and Relative survival (%)
(in parenthesis 95% confidence limits of 5 years survival)

	Men		Women		ALL	
	obs	rel	obs	rel	obs	rel
1 year	30	31	34	34	32	33
3 years	13	14	17	18	15	16
5 years	10	11	14	15	12	13
95% CI	(7-15)	(7-17)	(10-19)	(11-21)	(9-16)	(10-17)

UMBRIA - Incident cases 1994-'96

AGE CLASSES	Men	Women
15-44	20	13
45-54	19	10
55-64	33	19
65-74	34	35
75+	24	18
ALL	130	95



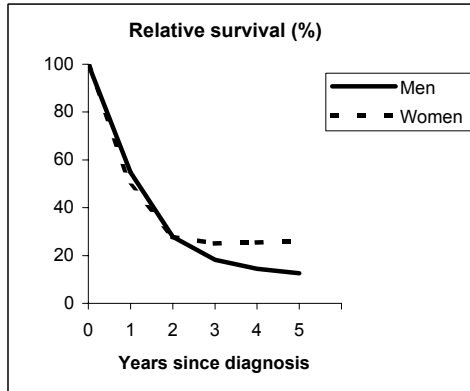
Observed and Relative survival (%)
(in parenthesis 95% confidence limits of 5 years survival)

	Men		Women		ALL	
	obs	rel	obs	rel	obs	rel
1 year	42	43	40	41	41	42
3 years	22	23	23	25	22	24
5 years	16	18	18	20	17	19
95% CI	(10-23)	(12-26)	(11-27)	(13-31)	(12-22)	(14-25)

BRAIN (ICD-IX 191)

LATINA - Incident cases 1990-'94

AGE CLASSES	Men	Women
15-44	14	7
45-54	10	7
55-64	12	8
65-74	14	8
75+	2	3
ALL	52	33

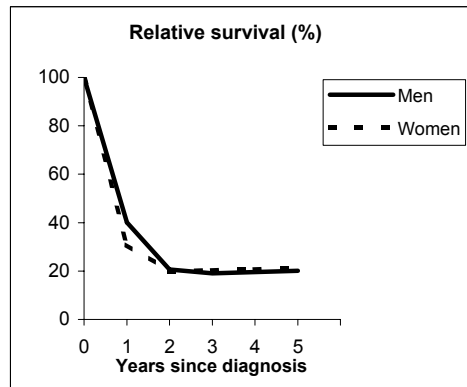


Observed and Relative survival (%)
(in parenthesis 95% confidence limits of 5 years survival)

	Men		Women		ALL	
	<i>obs</i>	<i>rel</i>	<i>obs</i>	<i>rel</i>	<i>obs</i>	<i>rel</i>
1 year	54	55	48	49	52	52
3 years	17	18	24	25	20	21
5 years	12	13	24	26	16	18
95% CI	(5-23)	(6-25)	(13-41)	(14-44)	(10-26)	(11-28)

SASSARI - Incident cases 1992-'94

AGE CLASSES	Men	Women
15-44	10	9
45-54	14	2
55-64	10	11
65-74	8	8
75+	9	6
ALL	51	36

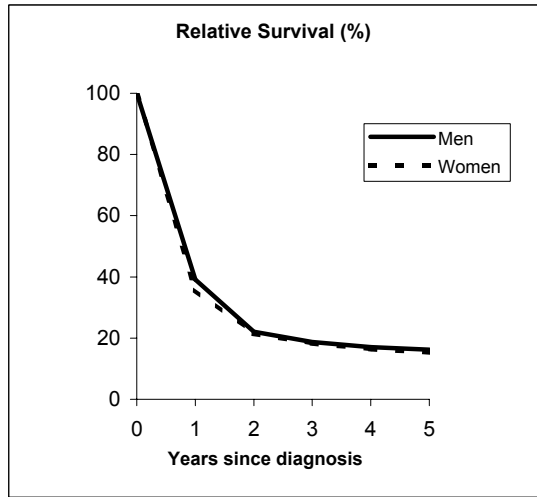


Observed and Relative survival (%)
(in parenthesis 95% confidence limits of 5 years survival)

	Men		Women		ALL	
	<i>obs</i>	<i>rel</i>	<i>obs</i>	<i>rel</i>	<i>obs</i>	<i>rel</i>
1 year	39	40	31	31	36	36
3 years	18	19	19	20	18	20
5 years	18	20	19	21	18	21
95% CI	(10-30)	(11-34)	(10-35)	(11-38)	(12-28)	(13-31)

Pool of Italian Registries

REGISTRY	Number of cases		
	Men	Women	Total
Torino	186	137	323
Genova	116	127	243
Varese	134	121	255
Veneto	373	335	708
Parma	100	68	168
Modena	139	98	237
Ferrara	79	59	138
Romagna	108	76	184
Macerata	43	40	83
Firenze-Prato	192	215	407
Umbria	130	95	225
Latina	52	33	85
Sassari	51	36	87
Ragusa	43	26	69
Italy	1,746	1,466	3,212



Observed and relative survival (%) by sex and age classes

	15-44		45-54		55-64		65-74		75+		ALL	
	obs	rel	obs	rel	obs	rel	obs	rel	obs	rel	obs	rel
Men												
1 year	79	79	51	51	32	32	22	23	9	10	38	39
3 years	53	53	19	19	10	10	5	5	5	6	17	19
5 years	45	46	15	15	6	7	4	4	4	6	14	16
95% CI	(40-51)	(40-51)	(11-20)	(0-0)	(4-9)	(5-10)	(2-6)	(3-7)	(2-7)	(4-12)	(13-16)	(14-18)
Women												
1 year	79	79	61	61	34	34	19	19	11	12	35	36
3 years	62	62	15	15	10	10	6	6	6	7	17	18
5 years	51	51	20	20	7	7	4	4	4	5	14	15
95% CI	(44-57)	(44-57)	(15-26)	(15-27)	(5-11)	(5-11)	(3-6)	(3-7)	(2-7)	(3-9)	(12-16)	(13-17)
Total												
1 year	79	79	55	55	33	33	21	21	10	11	37	38
3 years	56	56	21	21	10	10	5	6	5	6	17	19
5 years	47	48	17	17	7	7	4	4	4	6	14	16
95% CI	(43-52)	(44-52)	(14-21)	(14-21)	(5-9)	(5-9)	(3-5)	(3-6)	(3-6)	(4-9)	(13-15)	(14-17)

Five Years Age-adjusted Relative Survival of 1986-89 and 1990-94 incident cases

