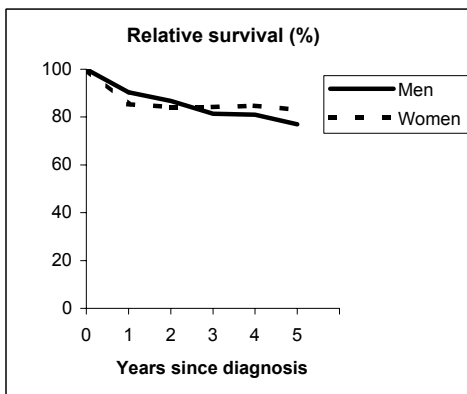


THYROID GLAND (ICD-IX 193)

TORINO - Incident cases 1990-'94

AGE CLASSES	Men	Women
15-44	23	71
45-54	12	26
55-64	14	38
65-74	12	27
75+	3	24
ALL	64	186

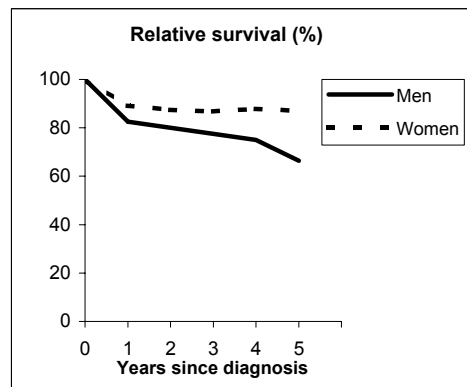


Observed and Relative survival (%)
(in parenthesis 95% confidence limits of 5 years survival)

	Men		Women		ALL	
	<i>obs</i>	<i>rel</i>	<i>obs</i>	<i>rel</i>	<i>obs</i>	<i>rel</i>
1 year	89	90	84	85	86	87
3 years	78	81	81	84	80	84
5 years	71	77	78	83	76	82
95% CI	(59-81)	(64-87)	(71-83)	(76-89)	(71-81)	(76-87)

GENOVA - Incident cases 1990-'94

AGE CLASSES	Men	Women
15-44	11	34
45-54	8	30
55-64	10	24
65-74	10	18
75+	7	13
ALL	46	119



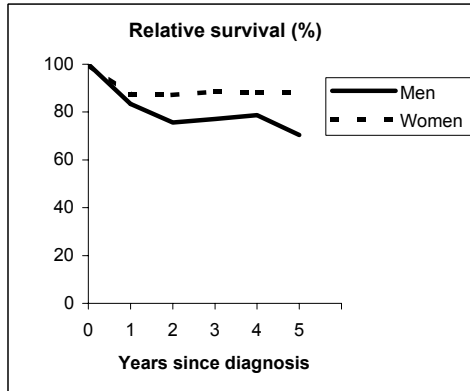
Observed and Relative survival (%)
(in parenthesis 95% confidence limits of 5 years survival)

	Men		Women		ALL	
	<i>obs</i>	<i>rel</i>	<i>obs</i>	<i>rel</i>	<i>obs</i>	<i>rel</i>
1 year	80	82	88	89	86	87
3 years	72	78	84	87	81	84
5 years	58	66	82	87	75	82
95% CI	(43-71)	(50-82)	(74-88)	(79-93)	(68-81)	(74-88)

THYROID GLAND (ICD-IX 193)

VARESE - Incident cases 1990-'94

AGE CLASSES	Men	Women
15-44	12	49
45-54	10	30
55-64	4	27
65-74	2	20
75+	5	26
ALL	33	152

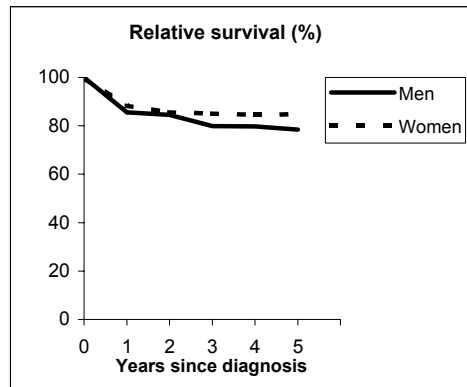


Observed and Relative survival (%)
(in parenthesis 95% confidence limits of 5 years survival)

	Men		Women		ALL	
	<i>obs</i>	<i>rel</i>	<i>obs</i>	<i>rel</i>	<i>obs</i>	<i>rel</i>
1 year	82	83	86	87	85	87
3 years	73	77	85	88	83	86
5 years	64	70	82	88	79	85
95% CI	(47-78)	(52-86)	(75-87)	(81-94)	(72-84)	(78-91)

VENETO - Incident cases 1990-'94

AGE CLASSES	Men	Women
15-44	47	114
45-54	18	63
55-64	22	65
65-74	21	52
75+	11	50
ALL	119	344



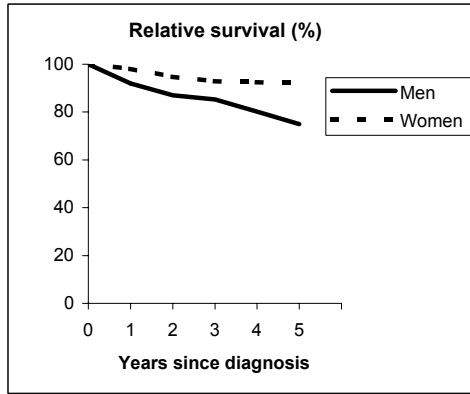
Observed and Relative survival (%)
(in parenthesis 95% confidence limits of 5 years survival)

	Men		Women		ALL	
	<i>obs</i>	<i>rel</i>	<i>obs</i>	<i>rel</i>	<i>obs</i>	<i>rel</i>
1 year	84	86	87	88	86	88
3 years	76	80	82	85	80	84
5 years	71	78	79	85	77	83
95% CI	(62-79)	(69-87)	(74-83)	(80-89)	(73-81)	(79-87)

THYROID GLAND (ICD-IX 193)

PARMA - Incident cases 1990-'94

AGE CLASSES	Men	Women
15-44	10	27
45-54	4	13
55-64	7	7
65-74	6	15
75+	4	8
ALL	31	70

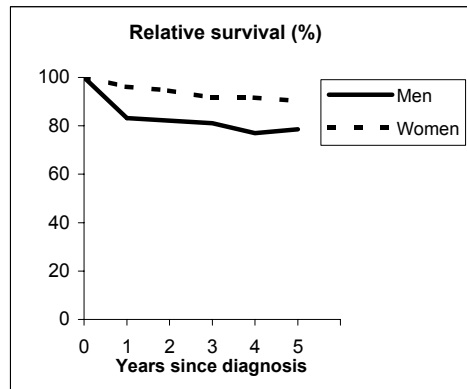


Observed and Relative survival (%)
(in parenthesis 95% confidence limits of 5 years survival)

	Men		Women		ALL	
	<i>obs</i>	<i>rel</i>	<i>obs</i>	<i>rel</i>	<i>obs</i>	<i>rel</i>
1 year	90	92	97	98	95	96
3 years	81	85	90	93	87	91
5 years	68	75	87	92	81	87
95% CI	(50-81)	(55-90)	(77-93)	(82-98)	(72-88)	(78-94)

MODENA - Incident cases 1990-'94

AGE CLASSES	Men	Women
15-44	13	51
45-54	8	27
55-64	7	25
65-74	6	21
75+	5	10
ALL	39	134



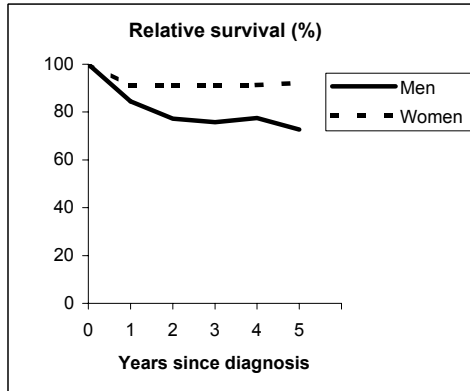
Observed and Relative survival (%)
(in parenthesis 95% confidence limits of 5 years survival)

	Men		Women		ALL	
	<i>obs</i>	<i>rel</i>	<i>obs</i>	<i>rel</i>	<i>obs</i>	<i>rel</i>
1 year	82	83	95	96	92	93
3 years	76	81	89	92	87	89
5 years	71	79	86	90	83	88
95% CI	(55-83)	(61-92)	(80-91)	(83-95)	(77-88)	(81-93)

THYROID GLAND (ICD-IX 193)

FERRARA - Incident cases 1990-'94

AGE CLASSES	Men	Women
15-44	9	38
45-54	8	31
55-64	10	18
65-74	8	16
75+	1	9
ALL	36	112

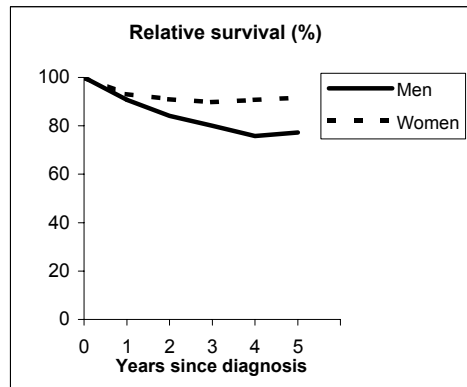


Observed and Relative survival (%)
(in parenthesis 95% confidence limits of 5 years survival)

	Men		Women		ALL	
	<i>obs</i>	<i>rel</i>	<i>obs</i>	<i>rel</i>	<i>obs</i>	<i>rel</i>
1 year	83	84	90	91	88	89
3 years	71	76	88	91	84	88
5 years	66	73	88	92	82	88
95% CI	(49-79)	(54-88)	(80-92)	(84-97)	(75-88)	(80-93)

ROMAGNA - Incident cases 1990-'94

AGE CLASSES	Men	Women
15-44	12	38
45-54	7	17
55-64	7	20
65-74	7	16
75+	5	14
ALL	38	105



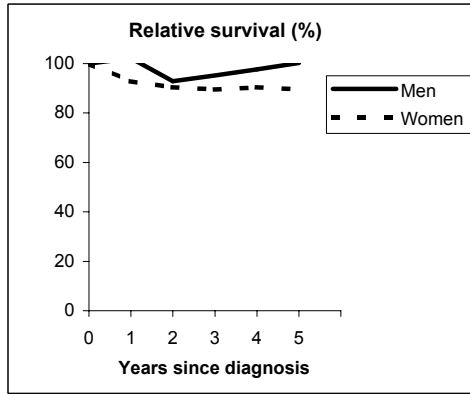
Observed and Relative survival (%)
(in parenthesis 95% confidence limits of 5 years survival)

	Men		Women		ALL	
	<i>obs</i>	<i>rel</i>	<i>obs</i>	<i>rel</i>	<i>obs</i>	<i>rel</i>
1 year	89	91	92	93	92	92
3 years	76	80	88	90	85	87
5 years	71	77	88	92	83	88
95% CI	(55-83)	(60-90)	(80-93)	(84-97)	(76-88)	(81-94)

THYROID GLAND (ICD-IX 193)

MACERATA - Incident cases 1991-'94

AGE CLASSES	Men	Women
15-44	4	29
45-54	0	14
55-64	2	9
65-74	1	6
75+	2	6
ALL	9	64

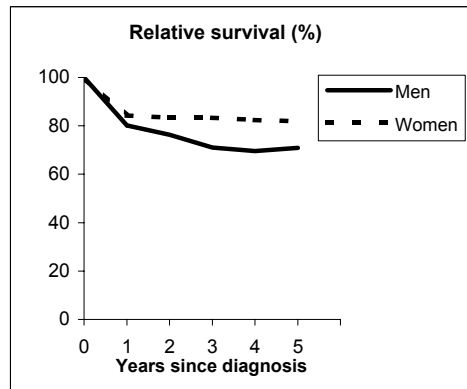


Observed and Relative survival (%)
(in parenthesis 95% confidence limits of 5 years survival)

	Men		Women		ALL	
	obs	rel	obs	rel	obs	rel
1 year	100	102	92	93	93	94
3 years	89	95	88	90	88	90
5 years	89	100	86	90	86	91
95% CI	(56-98)	(64-111)	(75-92)	(79-96)	(77-92)	(81-97)

FIRENZE-PRATO - Incident cases 1990-'94

AGE CLASSES	Men	Women
15-44	31	61
45-54	18	47
55-64	12	36
65-74	13	34
75+	8	40
ALL	82	218



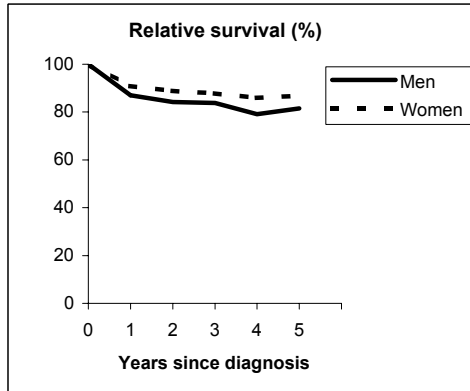
Observed and Relative survival (%)
(in parenthesis 95% confidence limits of 5 years survival)

	Men		Women		ALL	
	obs	rel	obs	rel	obs	rel
1 year	79	80	83	84	82	83
3 years	68	71	79	83	76	80
5 years	65	71	75	82	72	79
95% CI	(55-75)	(59-81)	(69-80)	(75-88)	(67-77)	(73-84)

THYROID GLAND (ICD-IX 193)

UMBRIA - Incident cases 1994-'96

AGE CLASSES	Men	Women
15-44	8	34
45-54	6	25
55-64	11	18
65-74	7	11
75+	7	11
ALL	39	99

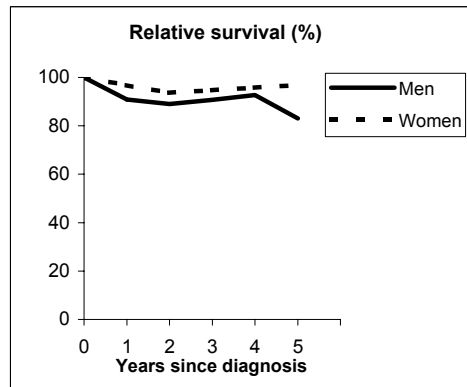


Observed and Relative survival (%)
(in parenthesis 95% confidence limits of 5 years survival)

	Men		Women		ALL	
	<i>obs</i>	<i>rel</i>	<i>obs</i>	<i>rel</i>	<i>obs</i>	<i>rel</i>
1 year	85	87	90	91	88	90
3 years	77	84	85	88	83	87
5 years	70	81	82	87	78	85
95% CI	(54-83)	(63-96)	(73-88)	(77-94)	(70-85)	(77-92)

SASSARI - Incident cases 1992-'94

AGE CLASSES	Men	Women
15-44	9	31
45-54	4	24
55-64	8	4
65-74	3	8
75+	4	7
ALL	28	74



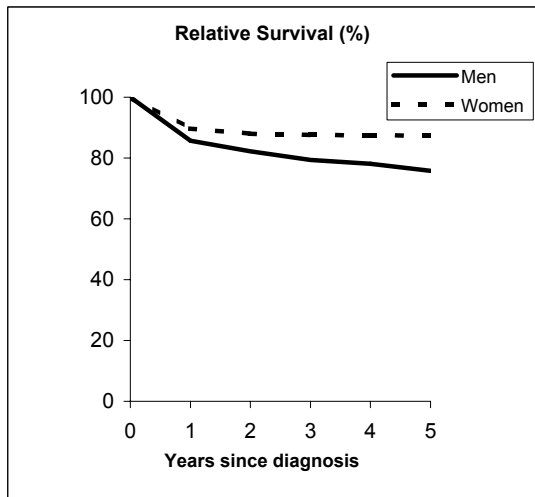
Observed and Relative survival (%)
(in parenthesis 95% confidence limits of 5 years survival)

	Men		Women		ALL	
	<i>obs</i>	<i>rel</i>	<i>obs</i>	<i>rel</i>	<i>obs</i>	<i>rel</i>
1 year	89	91	96	97	94	95
3 years	86	91	92	95	90	94
5 years	75	83	92	97	87	93
95% CI	(57-87)	(63-97)	(83-96)	(88-101)	(79-92)	(85-99)

THYROID GLAND (ICD-IX 193)

Pool of Italian Registries

REGISTRY	Number of cases		
	Men	Women	Total
Torino	64	186	250
Genova	46	119	165
Varese	33	152	185
Veneto	119	344	463
Parma	31	70	101
Modena	39	134	173
Ferrara	36	112	148
Romagna	38	105	143
Macerata	9	64	73
Firenze-Prato	82	218	300
Umbria	39	99	138
Latina	26	39	65
Sassari	28	74	102
Ragusa	11	38	49
Italy	601	1,754	2,355



Observed and relative survival (%) by sex and age classes

	15-44		45-54		55-64		65-74		75+		ALL	
	obs	rel	obs	rel	obs	rel	obs	rel	obs	rel	obs	rel
Men												
1 year	98	99	93	93	86	87	69	71	48	53	84	86
3 years	97	97	85	86	73	76	55	61	27	36	75	79
5 years	96	97	79	81	58	62	48	58	20	34	69	76
95% CI	(93-98)	(94-99)	(70-85)	(72-87)	(49-66)	(52-71)	(39-58)	(47-69)	(12-32)	(20-53)	(65-72)	(72-80)
Women												
1 year	100	100	98	98	92	93	78	79	52	55	89	90
3 years	99	99	97	98	87	89	70	73	37	45	85	88
5 years	99	99	96	97	85	88	64	70	30	44	82	87
95% CI	(97-99)	(98-100)	(93-97)	(94-99)	(81-89)	(83-92)	(58-70)	(63-76)	(25-37)	(35-53)	(80-84)	(85-89)
Total												
1 year	99	99	97	97	91	91	75	76	51	54	88	89
3 years	99	99	94	95	83	85	66	70	35	43	82	85
5 years	98	99	92	93	78	81	60	67	28	42	79	84
95% CI	(97-99)	(97-99)	(89-94)	(90-95)	(73-81)	(76-85)	(54-65)	(61-72)	(23-34)	(34-50)	(77-80)	(83-86)

Five Years Age-adjusted Relative Survival of 1986-89 and 1990-94 incident cases

Men and Women

