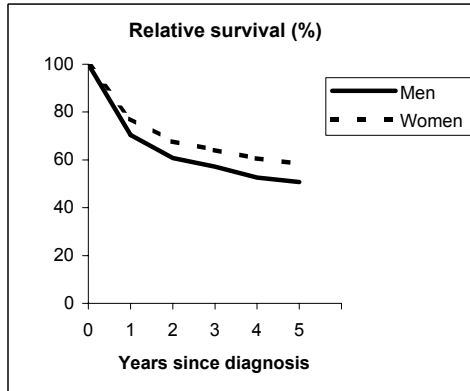


NON HODGKIN'S LYMPHOMAS (ICD-IX 200, 202)

TORINO - Incident cases 1990-'94

AGE CLASSES	Men	Women
15-44	54	31
45-54	67	46
55-64	106	60
65-74	103	90
75+	81	89
ALL	411	316

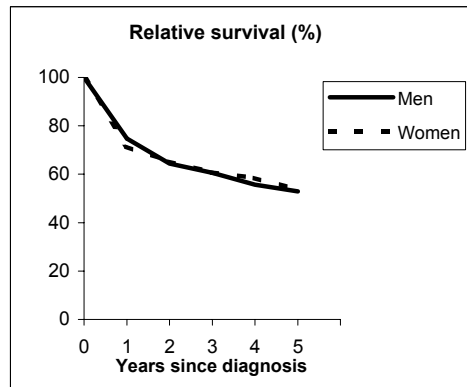


Observed and Relative survival (%)
(in parenthesis 95% confidence limits of 5 years survival)

	Men		Women		ALL	
	<i>obs</i>	<i>rel</i>	<i>obs</i>	<i>rel</i>	<i>obs</i>	<i>rel</i>
1 year	68	70	76	77	72	73
3 years	52	57	60	64	55	60
5 years	43	51	52	58	47	54
95% CI	(38-48)	(45-56)	(46-57)	(52-65)	(43-50)	(50-58)

GENOVA - Incident cases 1990-'94

AGE CLASSES	Men	Women
15-44	69	42
45-54	30	25
55-64	65	54
65-74	105	90
75+	72	107
ALL	341	318



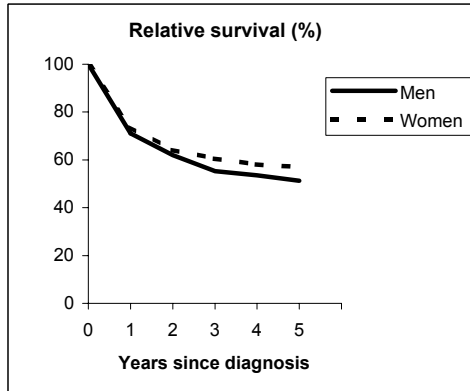
Observed and Relative survival (%)
(in parenthesis 95% confidence limits of 5 years survival)

	Men		Women		ALL	
	<i>obs</i>	<i>rel</i>	<i>obs</i>	<i>rel</i>	<i>obs</i>	<i>rel</i>
1 year	72	75	69	71	71	73
3 years	55	61	56	61	55	61
5 years	44	53	46	54	45	53
95% CI	(39-50)	(47-59)	(40-51)	(47-60)	(41-49)	(49-58)

NON HODGKIN'S LYMPHOMAS (ICD-IX 200, 202)

VARESE - Incident cases 1990-'94

AGE CLASSES	Men	Women
15-44	73	51
45-54	42	42
55-64	68	69
65-74	90	81
75+	66	111
ALL	339	354

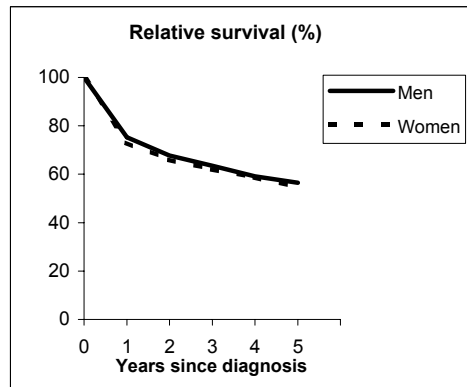


Observed and Relative survival (%)
(in parenthesis 95% confidence limits of 5 years survival)

	Men		Women		ALL	
	<i>obs</i>	<i>rel</i>	<i>obs</i>	<i>rel</i>	<i>obs</i>	<i>rel</i>
1 year	69	71	72	74	70	72
3 years	50	55	56	61	53	58
5 years	43	51	49	57	46	54
95% CI	(38-49)	(45-58)	(44-54)	(51-63)	(43-50)	(50-59)

VENETO - Incident cases 1990-'94

AGE CLASSES	Men	Women
15-44	131	112
45-54	124	91
55-64	207	151
65-74	244	262
75+	207	274
ALL	913	890



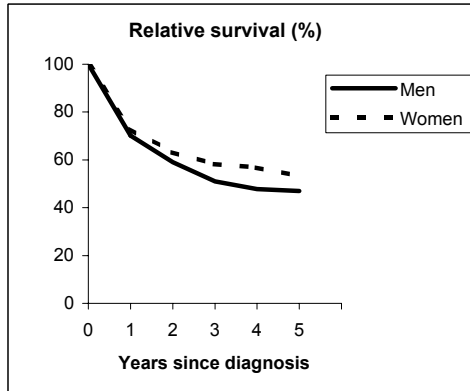
Observed and Relative survival (%)
(in parenthesis 95% confidence limits of 5 years survival)

	Men		Women		ALL	
	<i>obs</i>	<i>rel</i>	<i>obs</i>	<i>rel</i>	<i>obs</i>	<i>rel</i>
1 year	73	75	71	73	72	74
3 years	57	63	57	62	57	63
5 years	47	56	47	55	47	55
95% CI	(44-50)	(53-60)	(44-50)	(51-58)	(45-49)	(53-58)

NON HODGKIN'S LYMPHOMAS (ICD-IX 200, 202)

PARMA - Incident cases 1990-'94

AGE CLASSES	Men	Women
15-44	28	15
45-54	19	23
55-64	48	43
65-74	48	62
75+	41	88
ALL	184	231

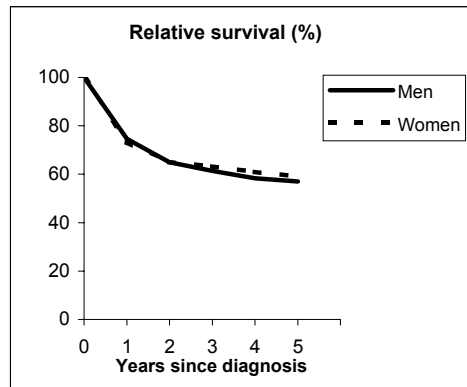


Observed and Relative survival (%)
(in parenthesis 95% confidence limits of 5 years survival)

	Men		Women		ALL	
	obs	rel	obs	rel	obs	rel
1 year	68	70	71	73	70	72
3 years	46	51	53	58	50	55
5 years	40	47	45	53	43	51
95% CI	(33-47)	(39-56)	(39-52)	(46-61)	(38-48)	(45-56)

MODENA - Incident cases 1990-'94

AGE CLASSES	Men	Women
15-44	47	41
45-54	43	33
55-64	66	49
65-74	104	85
75+	83	104
ALL	343	312



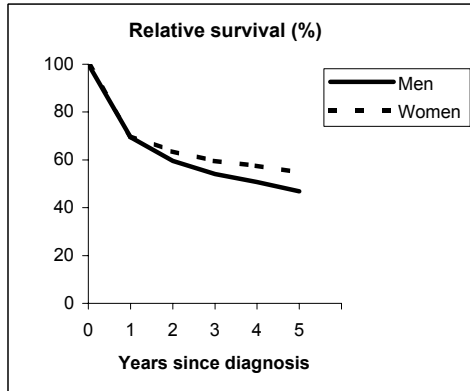
Observed and Relative survival (%)
(in parenthesis 95% confidence limits of 5 years survival)

	Men		Women		ALL	
	obs	rel	obs	rel	obs	rel
1 year	72	75	71	73	72	74
3 years	55	61	58	63	56	62
5 years	47	57	51	59	49	58
95% CI	(41-52)	(51-64)	(45-56)	(53-66)	(45-53)	(53-63)

NON HODGKIN'S LYMPHOMAS (ICD-IX 200, 202)

FERRARA - Incident cases 1990-'94

AGE CLASSES	Men	Women
15-44	22	20
45-54	23	16
55-64	42	44
65-74	56	52
75+	44	71
ALL	187	203

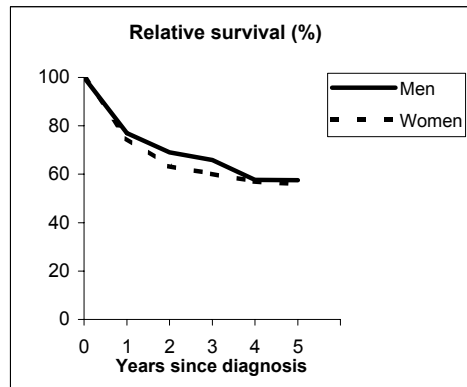


Observed and Relative survival (%)
(in parenthesis 95% confidence limits of 5 years survival)

	Men		Women		ALL	
	<i>obs</i>	<i>rel</i>	<i>obs</i>	<i>rel</i>	<i>obs</i>	<i>rel</i>
1 year	67	70	68	70	68	70
3 years	48	54	55	60	51	57
5 years	38	47	47	55	43	51
95% CI	(31-45)	(38-56)	(40-54)	(47-63)	(38-48)	(45-57)

ROMAGNA - Incident cases 1990-'94

AGE CLASSES	Men	Women
15-44	36	37
45-54	27	13
55-64	61	44
65-74	74	60
75+	56	62
ALL	254	216



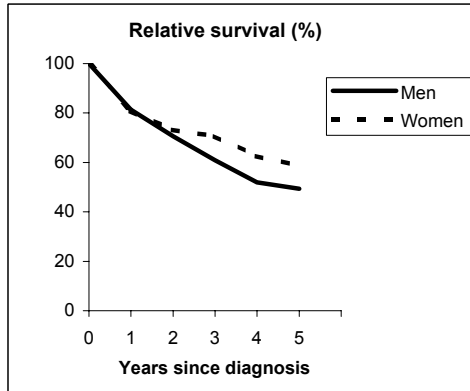
Observed and Relative survival (%)
(in parenthesis 95% confidence limits of 5 years survival)

	Men		Women		ALL	
	<i>obs</i>	<i>rel</i>	<i>obs</i>	<i>rel</i>	<i>obs</i>	<i>rel</i>
1 year	75	77	74	75	74	76
3 years	61	66	57	60	59	63
5 years	50	58	51	56	50	57
95% CI	(44-56)	(51-65)	(44-57)	(49-63)	(46-55)	(52-62)

NON HODGKIN'S LYMPHOMAS (ICD-IX 200, 202)

MACERATA - Incident cases 1991-'94

AGE CLASSES	Men	Women
15-44	9	10
45-54	13	5
55-64	24	13
65-74	26	28
75+	11	22
ALL	83	78

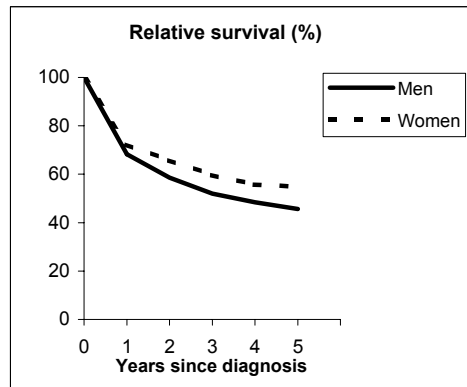


Observed and Relative survival (%)
(in parenthesis 95% confidence limits of 5 years survival)

	Men		Women		ALL	
	obs	rel	obs	rel	obs	rel
1 year	80	81	79	81	80	81
3 years	57	61	67	71	61	66
5 years	43	49	53	59	48	54
95% CI	(33-54)	(38-62)	(42-63)	(46-70)	(40-56)	(45-62)

FIRENZE-PRATO - Incident cases 1990-'94

AGE CLASSES	Men	Women
15-44	72	46
45-54	63	54
55-64	115	74
65-74	137	121
75+	97	134
ALL	484	429



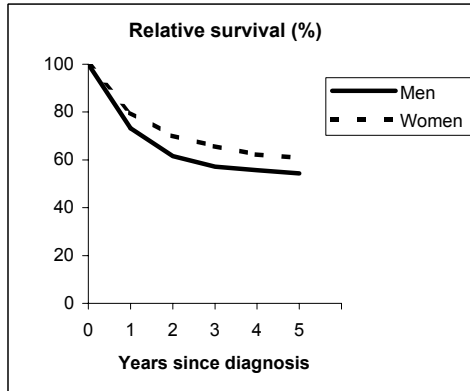
Observed and Relative survival (%)
(in parenthesis 95% confidence limits of 5 years survival)

	Men		Women		ALL	
	obs	rel	obs	rel	obs	rel
1 year	66	68	70	72	68	70
3 years	48	52	55	60	51	56
5 years	39	46	48	55	43	50
95% CI	(35-43)	(41-51)	(43-53)	(49-60)	(40-46)	(46-54)

NON HODGKIN'S LYMPHOMAS (ICD-IX 200, 202)

UMBRIA - Incident cases 1994-'96

AGE CLASSES	Men	Women
15-44	36	25
45-54	26	16
55-64	51	37
65-74	76	65
75+	55	55
ALL	244	198

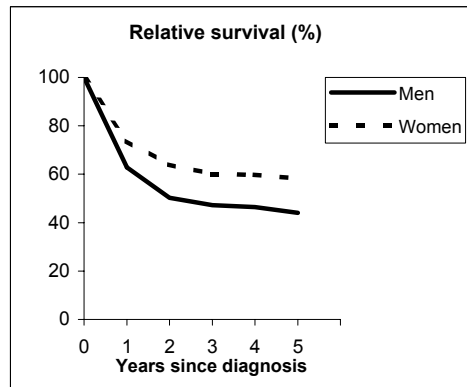


Observed and Relative survival (%)
(in parenthesis 95% confidence limits of 5 years survival)

	Men		Women		ALL	
	<i>obs</i>	<i>rel</i>	<i>obs</i>	<i>rel</i>	<i>obs</i>	<i>rel</i>
1 year	71	73	78	80	74	76
3 years	52	57	61	66	56	61
5 years	46	54	53	61	49	57
95% CI	(40-53)	(47-62)	(45-60)	(52-69)	(44-54)	(51-63)

LATINA - Incident cases 1990-'94

AGE CLASSES	Men	Women
15-44	22	22
45-54	21	10
55-64	28	17
65-74	20	22
75+	13	14
ALL	104	85



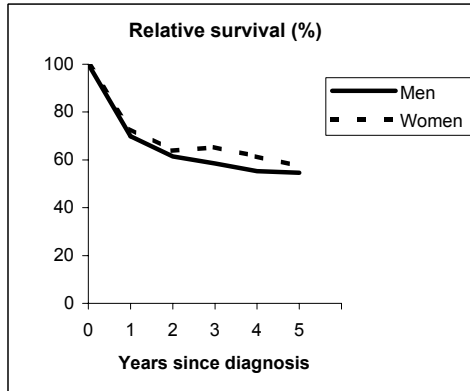
Observed and Relative survival (%)
(in parenthesis 95% confidence limits of 5 years survival)

	Men		Women		ALL	
	<i>obs</i>	<i>rel</i>	<i>obs</i>	<i>rel</i>	<i>obs</i>	<i>rel</i>
1 year	62	63	73	74	67	68
3 years	44	47	58	60	50	53
5 years	39	44	54	58	46	51
95% CI	(30-49)	(34-55)	(44-64)	(47-69)	(39-53)	(43-58)

NON HODGKIN'S LYMPHOMAS (ICD-IX 200, 202)

SASSARI - Incident cases 1992-'94

AGE CLASSES	Men	Women
15-44	22	16
45-54	16	9
55-64	11	12
65-74	23	21
75+	18	19
ALL	90	77

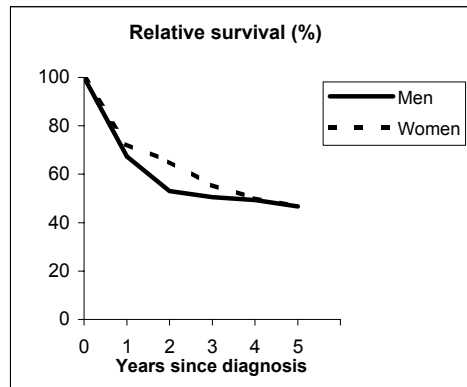


Observed and Relative survival (%)
(in parenthesis 95% confidence limits of 5 years survival)

	Men		Women		ALL	
	obs	rel	obs	rel	obs	rel
1 year	68	70	71	73	69	71
3 years	53	58	61	65	57	62
5 years	46	55	51	57	48	56
95% CI	(36-57)	(43-67)	(40-62)	(45-70)	(41-56)	(47-65)

RAGUSA - Incident cases 1990-'94

AGE CLASSES	Men	Women
15-44	15	8
45-54	11	6
55-64	19	13
65-74	14	14
75+	19	7
ALL	78	48



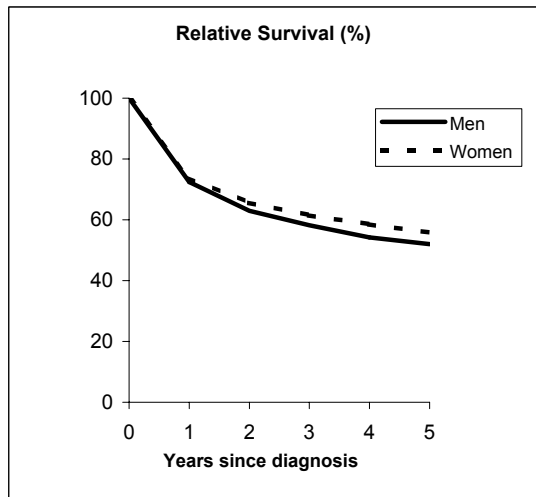
Observed and Relative survival (%)
(in parenthesis 95% confidence limits of 5 years survival)

	Men		Women		ALL	
	obs	rel	obs	rel	obs	rel
1 year	65	67	71	72	67	69
3 years	46	51	52	56	48	52
5 years	40	47	42	47	40	47
95% CI	(30-51)	(35-60)	(29-56)	(32-62)	(32-49)	(37-57)

NON HODGKIN'S LYMPHOMAS (ICD-IX 200, 202)

Pool of Italian Registries

REGISTRY	Number of cases		
	Men	Women	Total
Torino	411	316	727
Genova	341	318	659
Varese	339	354	693
Veneto	913	890	1,803
Parma	184	231	415
Modena	343	312	655
Ferrara	187	203	390
Romagna	254	216	470
Macerata	83	78	161
Firenze-Prato	484	429	913
Umbria	244	198	442
Latina	104	85	189
Sassari	90	77	167
Ragusa	78	48	126
Italy	4,055	3,755	7,810



Observed and relative survival (%) by sex and age classes

	15-44		45-54		55-64		65-74		75+		ALL	
	obs	rel	obs	rel	obs	rel	obs	rel	obs	rel	obs	rel
Men												
1 year	76	76	82	82	77	78	70	72	53	58	70	72
3 years	65	65	69	69	59	61	51	56	31	41	53	58
5 years	61	62	61	63	49	52	40	48	21	36	44	52
95% CI	(57-65)	(58-65)	(57-65)	(58-67)	(45-52)	(49-56)	(37-43)	(45-52)	(19-24)	(32-41)	(43-46)	(50-54)
Women												
1 year	87	87	89	89	83	83	72	73	53	57	72	74
3 years	77	77	80	81	71	72	56	58	34	41	57	62
5 years	74	74	75	76	63	65	46	51	23	34	49	56
95% CI	(69-77)	(70-78)	(71-79)	(72-81)	(59-66)	(61-69)	(43-49)	(47-54)	(21-26)	(30-37)	(47-50)	(54-58)
Total												
1 year	80	80	85	85	79	80	71	72	53	57	71	73
3 years	70	70	74	74	64	66	53	57	32	41	55	60
5 years	66	67	67	69	55	58	43	49	22	35	46	54
95% CI	(64-69)	(64-70)	(64-70)	(65-72)	(52-57)	(55-60)	(41-45)	(47-52)	(20-24)	(32-37)	(45-47)	(53-55)

Five Years Age-adjusted Relative Survival of 1986-89 and 1990-94 incident cases

Men and Women

