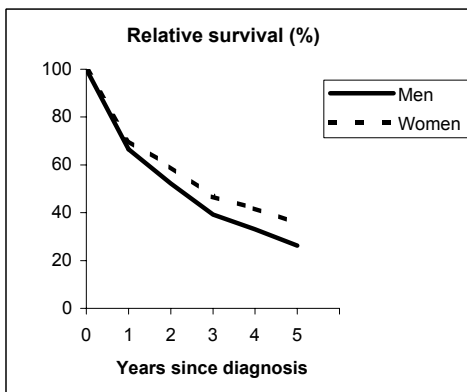


MULTIPLE MYELOMA (ICD-IX 203)

TORINO - Incident cases 1990-'94

AGE CLASSES	Men	Women
15-44	3	1
45-54	8	8
55-64	24	24
65-74	35	32
75+	19	43
ALL	89	108

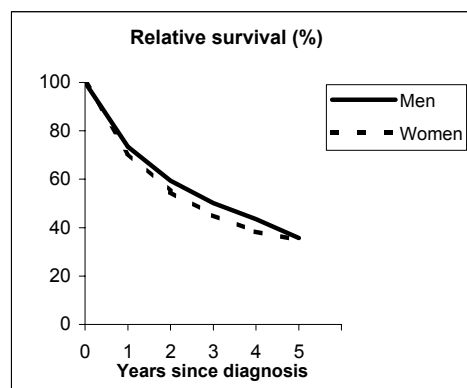


Observed and Relative survival (%)
(in parenthesis 95% confidence limits of 5 years survival)

	Men		Women		ALL	
	<i>obs</i>	<i>rel</i>	<i>obs</i>	<i>rel</i>	<i>obs</i>	<i>rel</i>
1 year	64	67	68	70	66	69
3 years	35	39	43	47	39	43
5 years	21	26	30	36	26	31
95% CI	(14-31)	(17-38)	(22-40)	(26-46)	(21-33)	(25-39)

GENOVA - Incident cases 1990-'94

AGE CLASSES	Men	Women
15-44	1	3
45-54	14	6
55-64	34	15
65-74	45	39
75+	38	57
ALL	132	120



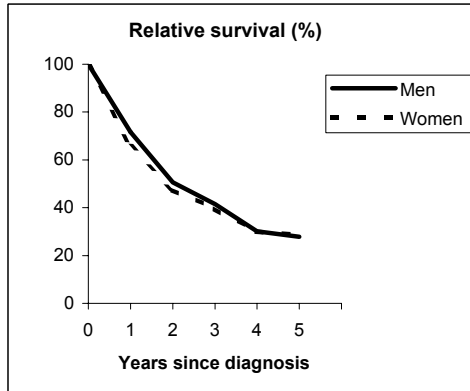
Observed and Relative survival (%)
(in parenthesis 95% confidence limits of 5 years survival)

	Men		Women		ALL	
	<i>obs</i>	<i>rel</i>	<i>obs</i>	<i>rel</i>	<i>obs</i>	<i>rel</i>
1 year	70	73	68	71	69	72
3 years	44	50	40	45	42	48
5 years	28	36	28	35	28	35
95% CI	(21-37)	(27-46)	(21-37)	(26-45)	(23-34)	(29-43)

MULTIPLE MYELOMA (ICD-IX 203)

VARESE - Incident cases 1990-'94

AGE CLASSES	Men	Women
15-44	2	3
45-54	8	13
55-64	22	13
65-74	35	34
75+	31	61
ALL	98	124

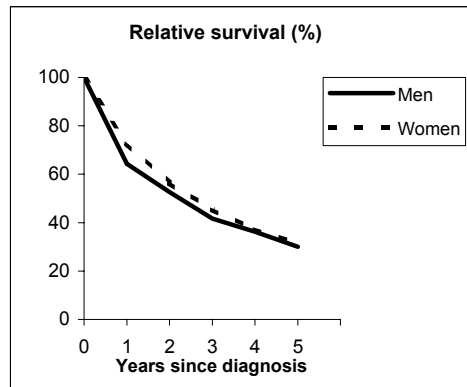


Observed and Relative survival (%)
(in parenthesis 95% confidence limits of 5 years survival)

	Men		Women		ALL	
	obs	rel	obs	rel	obs	rel
1 year	68	72	63	66	65	68
3 years	36	41	35	40	35	40
5 years	21	28	23	29	22	28
95% CI	(14-31)	(19-40)	(16-31)	(20-39)	(17-28)	(22-36)

VENETO - Incident cases 1990-'94

AGE CLASSES	Men	Women
15-44	8	8
45-54	31	23
55-64	56	64
65-74	72	109
75+	72	122
ALL	239	326



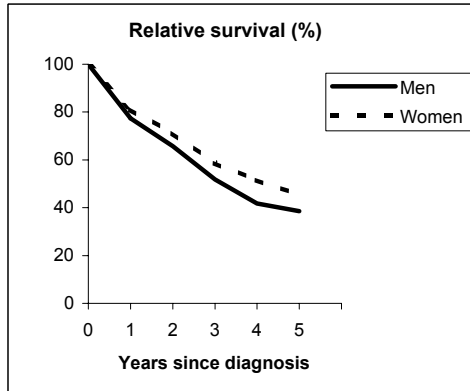
Observed and Relative survival (%)
(in parenthesis 95% confidence limits of 5 years survival)

	Men		Women		ALL	
	obs	rel	obs	rel	obs	rel
1 year	62	64	71	73	67	69
3 years	36	42	41	45	39	44
5 years	24	30	26	31	25	31
95% CI	(19-30)	(24-38)	(22-32)	(26-37)	(22-29)	(27-36)

MULTIPLE MYELOMA (ICD-IX 203)

PARMA - Incident cases 1990-'94

AGE CLASSES	Men	Women
15-44	3	2
45-54	11	2
55-64	15	12
65-74	34	20
75+	31	36
ALL	94	72

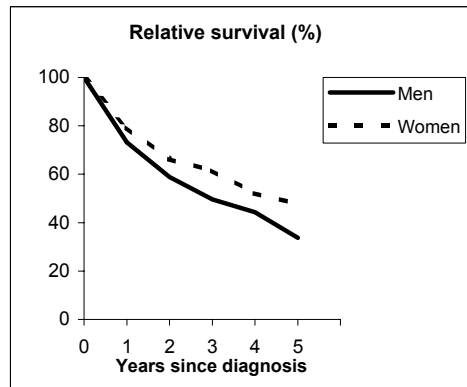


Observed and Relative survival (%)
(in parenthesis 95% confidence limits of 5 years survival)

	Men		Women		ALL	
	<i>obs</i>	<i>rel</i>	<i>obs</i>	<i>rel</i>	<i>obs</i>	<i>rel</i>
1 year	74	77	78	81	76	79
3 years	46	52	51	59	48	55
5 years	31	39	36	45	33	41
95% CI	(22-41)	(28-51)	(26-48)	(32-60)	(26-41)	(33-51)

MODENA - Incident cases 1990-'94

AGE CLASSES	Men	Women
15-44	2	3
45-54	12	3
55-64	28	22
65-74	42	31
75+	41	49
ALL	125	108



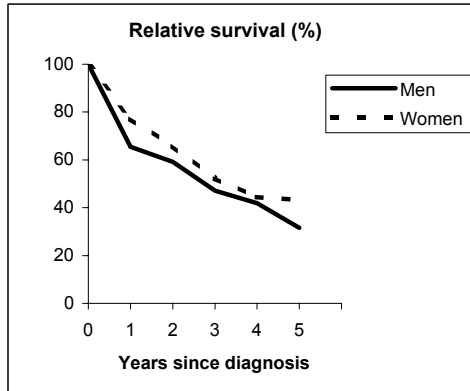
Observed and Relative survival (%)
(in parenthesis 95% confidence limits of 5 years survival)

	Men		Women		ALL	
	<i>obs</i>	<i>rel</i>	<i>obs</i>	<i>rel</i>	<i>obs</i>	<i>rel</i>
1 year	70	73	77	79	73	76
3 years	43	50	55	62	49	55
5 years	26	34	39	48	32	40
95% CI	(19-35)	(25-45)	(31-49)	(37-59)	(27-39)	(33-48)

MULTIPLE MYELOMA (ICD-IX 203)

FERRARA - Incident cases 1990-'94

AGE CLASSES	Men	Women
15-44	2	0
45-54	3	5
55-64	14	22
65-74	27	20
75+	32	38
ALL	78	85

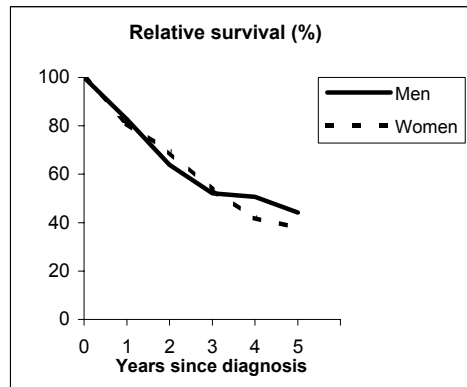


Observed and Relative survival (%)
(in parenthesis 95% confidence limits of 5 years survival)

	Men		Women		ALL	
	obs	rel	obs	rel	obs	rel
1 year	62	66	74	77	68	72
3 years	40	47	46	52	43	50
5 years	23	32	35	43	29	38
95% CI	(15-34)	(20-46)	(26-46)	(32-57)	(23-37)	(29-48)

ROMAGNA - Incident cases 1990-'94

AGE CLASSES	Men	Women
15-44	3	1
45-54	8	5
55-64	16	12
65-74	31	19
75+	35	30
ALL	93	67



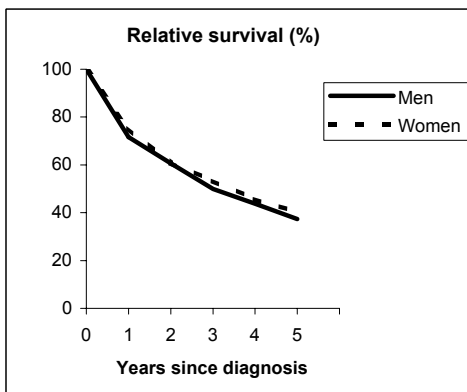
Observed and Relative survival (%)
(in parenthesis 95% confidence limits of 5 years survival)

	Men		Women		ALL	
	obs	rel	obs	rel	obs	rel
1 year	80	83	79	81	79	82
3 years	46	52	49	54	48	53
5 years	36	44	32	38	34	42
95% CI	(27-46)	(33-57)	(22-44)	(26-52)	(27-42)	(33-51)

MULTIPLE MYELOMA (ICD-IX 203)

FIRENZE-PRATO - Incident cases 1990-'94

AGE CLASSES	Men	Women
15-44	5	8
45-54	19	29
55-64	54	50
65-74	79	76
75+	79	101
ALL	236	264

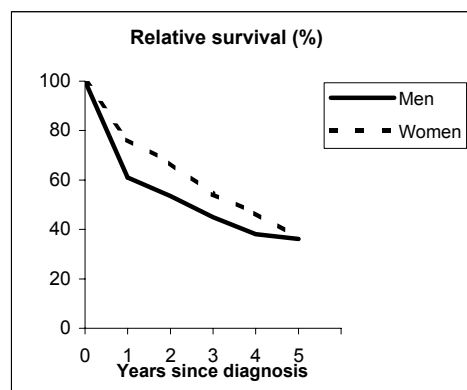


Observed and Relative survival (%)
(in parenthesis 95% confidence limits of 5 years survival)

	Men		Women		ALL	
	obs	rel	obs	rel	obs	rel
1 year	69	72	73	75	71	74
3 years	43	50	48	53	46	52
5 years	29	37	34	40	32	39
95% CI	(24-35)	(30-45)	(28-40)	(34-47)	(28-36)	(34-44)

UMBRIA - Incident cases 1994-'96

AGE CLASSES	Men	Women
15-44	5	3
45-54	7	3
55-64	10	21
65-74	31	28
75+	37	32
ALL	90	87



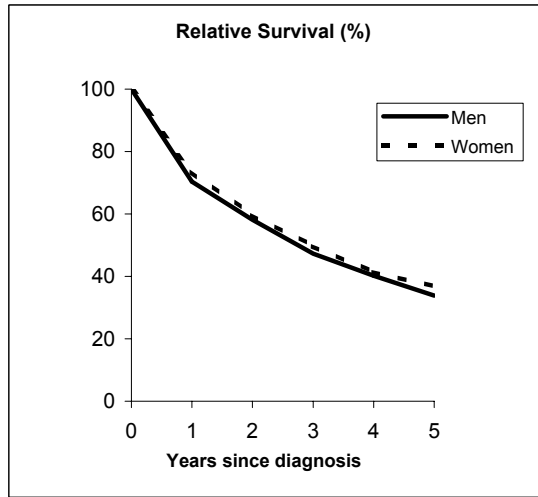
Observed and Relative survival (%)
(in parenthesis 95% confidence limits of 5 years survival)

	Men		Women		ALL	
	obs	rel	obs	rel	obs	rel
1 year	58	61	74	76	66	69
3 years	38	45	48	54	43	50
5 years	27	36	30	37	28	36
95% CI	(18-38)	(24-52)	(20-42)	(24-52)	(21-36)	(27-47)

MULTIPLE MYELOMA (ICD-IX 203)

Pool of Italian Registries

REGISTRY	Number of cases		
	Men	Women	Total
Torino	89	108	197
Genova	132	120	252
Varese	98	124	222
Veneto	239	326	565
Parma	94	72	166
Modena	125	108	233
Ferrara	78	85	163
Romagna	93	67	160
Macerata	33	36	69
Firenze-Prato	236	264	500
Umbria	90	87	177
Latina	34	33	67
Sassari	30	33	63
Ragusa	43	30	73
Italy	1,414	1,493	2,907



Observed and relative survival (%) by sex and age classes

	15-44		45-54		55-64		65-74		75+		ALL	
	obs	rel	obs	rel	obs	rel	obs	rel	obs	rel	obs	rel
Men												
1 year	84	84	82	82	78	79	70	72	52	57	67	70
3 years	60	60	63	64	52	55	42	46	25	34	41	47
5 years	54	54	46	48	36	39	25	30	14	25	27	34
95% CI	(38-69)	(38-69)	(38-55)	(39-56)	(31-41)	(33-45)	(21-29)	(26-35)	(11-18)	(20-31)	(24-29)	(31-37)
Women												
1 year	86	86	85	85	83	84	77	78	58	62	71	74
3 years	75	75	58	59	58	59	52	55	29	36	45	50
5 years	59	60	48	48	38	40	38	41	17	25	31	37
95% CI	(43-74)	(43-75)	(38-57)	(39-58)	(33-44)	(34-46)	(33-42)	(36-46)	(14-20)	(21-30)	(28-33)	(34-40)
Total												
1 year	85	85	83	84	81	81	73	75	55	60	69	72
3 years	67	67	61	61	55	57	47	51	27	35	43	49
5 years	56	57	47	48	37	39	31	36	16	25	29	35
95% CI	(44-67)	(45-68)	(41-53)	(41-54)	(33-41)	(35-43)	(28-34)	(32-39)	(14-18)	(22-29)	(27-30)	(33-38)

Five Years Age-adjusted Relative Survival of 1986-89 and 1990-94 incident cases

Men and Women

