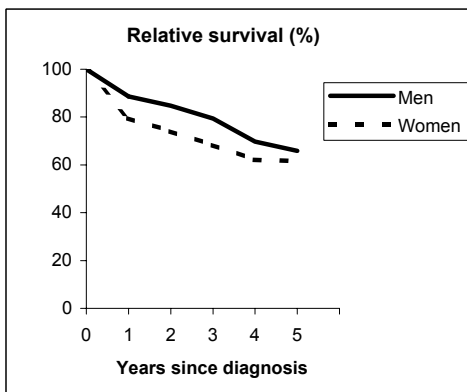


# LYMPHOID LEUKAEMIA (ICD-IX 204)

## TORINO - Incident cases 1990-'94

AGE CLASSES	Men	Women
15-44	12	3
45-54	8	6
55-64	23	16
65-74	22	23
75+	24	31
<b>ALL</b>	<b>89</b>	<b>79</b>

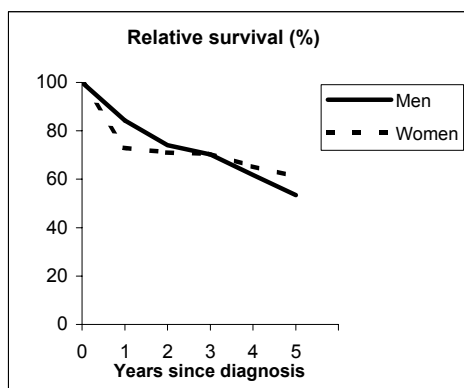


**Observed and Relative survival (%)**  
(in parenthesis 95% confidence limits of 5 years survival)

	Men		Women		ALL	
	<i>obs</i>	<i>rel</i>	<i>obs</i>	<i>rel</i>	<i>obs</i>	<i>rel</i>
1 year	85	89	77	80	82	84
3 years	71	79	62	68	67	74
<b>5 years</b>	<b>54</b>	<b>66</b>	<b>52</b>	<b>62</b>	<b>53</b>	<b>64</b>
95% CI	(44-64)	(53-78)	(41-63)	(49-74)	(45-60)	(55-73)

## GENOVA - Incident cases 1990-'94

AGE CLASSES	Men	Women
15-44	8	5
45-54	8	7
55-64	31	16
65-74	30	26
75+	35	21
<b>ALL</b>	<b>112</b>	<b>75</b>



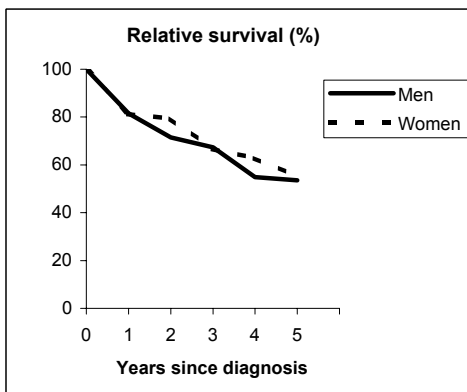
**Observed and Relative survival (%)**  
(in parenthesis 95% confidence limits of 5 years survival)

	Men		Women		ALL	
	<i>obs</i>	<i>rel</i>	<i>obs</i>	<i>rel</i>	<i>obs</i>	<i>rel</i>
1 year	81	84	71	73	77	80
3 years	63	70	64	70	63	70
<b>5 years</b>	<b>44</b>	<b>53</b>	<b>52</b>	<b>61</b>	<b>47</b>	<b>57</b>
95% CI	(35-53)	(42-65)	(41-63)	(48-74)	(40-54)	(48-65)

# LYMPHOID LEUKAEMIA (ICD-IX 204)

## VARESE - Incident cases 1990-'94

AGE CLASSES	Men	Women
15-44	11	6
45-54	2	7
55-64	16	13
65-74	24	16
75+	31	29
<b>ALL</b>	<b>84</b>	<b>71</b>

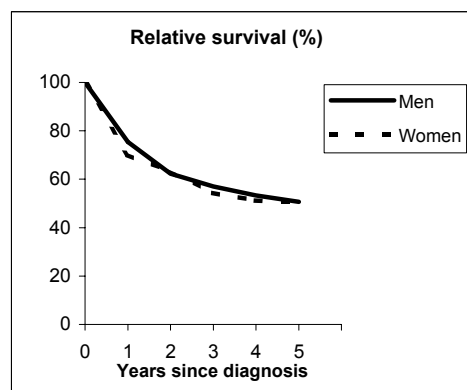


**Observed and Relative survival (%)**  
(in parenthesis 95% confidence limits of 5 years survival)

	Men		Women		ALL	
	<i>obs</i>	<i>rel</i>	<i>obs</i>	<i>rel</i>	<i>obs</i>	<i>rel</i>
1 year	77	82	79	81	78	81
3 years	57	67	61	67	59	67
<b>5 years</b>	<b>40</b>	<b>54</b>	<b>46</b>	<b>55</b>	<b>43</b>	<b>54</b>
95% CI	(31-51)	(41-68)	(35-58)	(42-69)	(36-51)	(45-64)

## VENETO - Incident cases 1990-'94

AGE CLASSES	Men	Women
15-44	28	20
45-54	18	11
55-64	49	25
65-74	43	46
75+	78	87
<b>ALL</b>	<b>216</b>	<b>189</b>



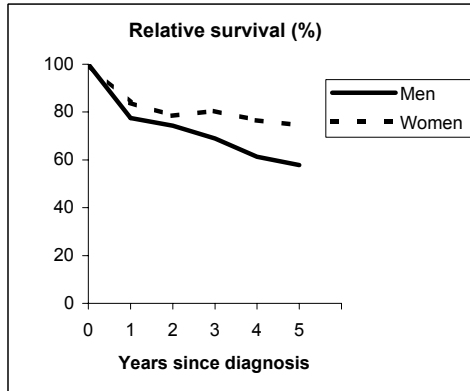
**Observed and Relative survival (%)**  
(in parenthesis 95% confidence limits of 5 years survival)

	Men		Women		ALL	
	<i>obs</i>	<i>rel</i>	<i>obs</i>	<i>rel</i>	<i>obs</i>	<i>rel</i>
1 year	72	75	68	70	70	73
3 years	49	57	49	54	49	56
<b>5 years</b>	<b>39</b>	<b>51</b>	<b>42</b>	<b>51</b>	<b>40</b>	<b>51</b>
95% CI	(33-46)	(43-59)	(35-49)	(43-60)	(36-45)	(45-57)

# LYMPHOID LEUKAEMIA (ICD-IX 204)

## MODENA - Incident cases 1990-'94

AGE CLASSES	Men	Women
15-44	4	3
45-54	4	7
55-64	15	12
65-74	23	20
75+	32	15
<b>ALL</b>	<b>78</b>	<b>57</b>

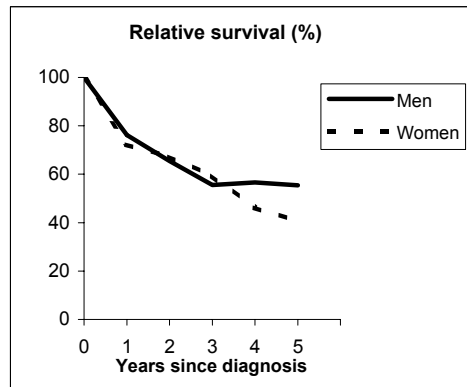


**Observed and Relative survival (%)**  
(in parenthesis 95% confidence limits of 5 years survival)

	Men		Women		ALL	
	<i>obs</i>	<i>rel</i>	<i>obs</i>	<i>rel</i>	<i>obs</i>	<i>rel</i>
1 year	74	78	82	84	77	80
3 years	59	69	75	80	66	74
<b>5 years</b>	<b>44</b>	<b>58</b>	<b>66</b>	<b>75</b>	<b>53</b>	<b>65</b>
95% CI	(33-55)	(44-73)	(53-77)	(60-87)	(45-62)	(55-76)

## FERRARA - Incident cases 1990-'94

AGE CLASSES	Men	Women
15-44	7	4
45-54	1	2
55-64	12	4
65-74	21	15
75+	23	27
<b>ALL</b>	<b>64</b>	<b>52</b>



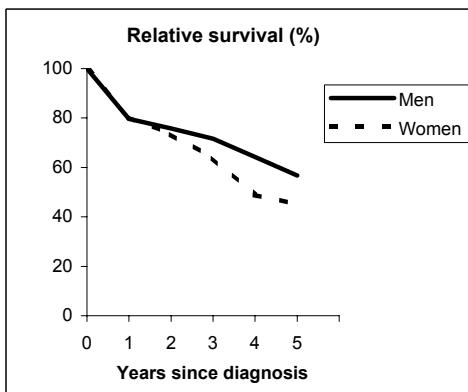
**Observed and Relative survival (%)**  
(in parenthesis 95% confidence limits of 5 years survival)

	Men		Women		ALL	
	<i>obs</i>	<i>rel</i>	<i>obs</i>	<i>rel</i>	<i>obs</i>	<i>rel</i>
1 year	73	76	69	72	71	74
3 years	48	56	52	59	50	57
<b>5 years</b>	<b>43</b>	<b>55</b>	<b>32</b>	<b>41</b>	<b>38</b>	<b>49</b>
95% CI	(31-55)	(40-72)	(21-46)	(27-58)	(29-47)	(38-60)

# LYMPHOID LEUKAEMIA (ICD-IX 204)

## ROMAGNA - Incident cases 1990-'94

AGE CLASSES	Men	Women
15-44	6	2
45-54	10	2
55-64	14	10
65-74	26	14
75+	33	18
<b>ALL</b>	<b>89</b>	<b>46</b>

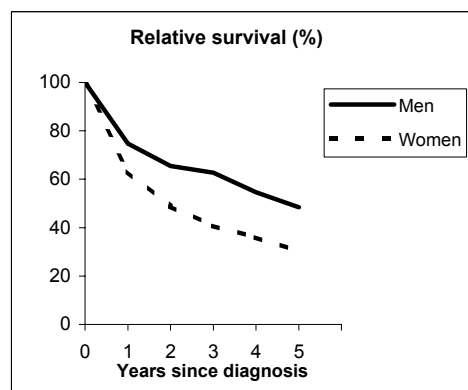


**Observed and Relative survival (%)**  
(in parenthesis 95% confidence limits of 5 years survival)

	Men		Women		ALL	
	obs	rel	obs	rel	obs	rel
1 year	76	80	78	80	77	80
3 years	63	72	59	64	61	69
<b>5 years</b>	<b>45</b>	<b>57</b>	<b>39</b>	<b>45</b>	<b>43</b>	<b>53</b>
95% CI	(35-56)	(44-70)	(26-53)	(30-62)	(35-52)	(43-63)

## FIRENZE-PRATO - Incident cases 1990-'94

AGE CLASSES	Men	Women
15-44	16	12
45-54	9	5
55-64	24	11
65-74	42	21
75+	47	40
<b>ALL</b>	<b>138</b>	<b>89</b>



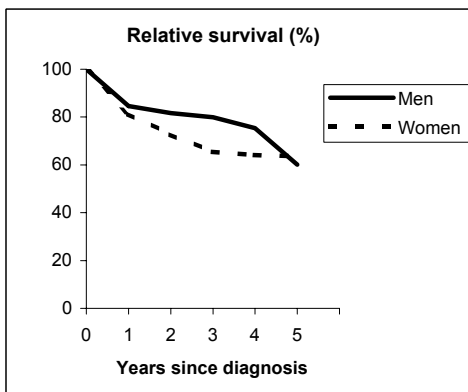
**Observed and Relative survival (%)**  
(in parenthesis 95% confidence limits of 5 years survival)

	Men		Women		ALL	
	obs	rel	obs	rel	obs	rel
1 year	72	75	61	63	67	70
3 years	55	63	36	41	48	54
<b>5 years</b>	<b>38</b>	<b>48</b>	<b>24</b>	<b>30</b>	<b>33</b>	<b>41</b>
95% CI	(31-47)	(39-59)	(16-34)	(20-42)	(27-39)	(34-49)

# LYMPHOID LEUKAEMIA (ICD-IX 204)

UMBRIA - Incident cases 1994-'96

AGE CLASSES	Men	Women
15-44	7	6
45-54	6	3
55-64	17	10
65-74	31	26
75+	25	21
<b>ALL</b>	<b>86</b>	<b>66</b>



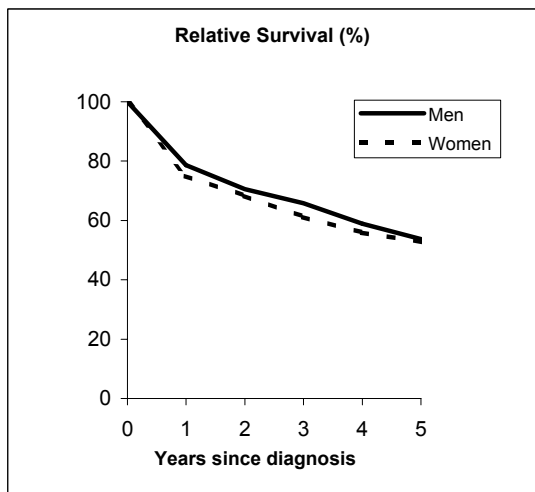
**Observed and Relative survival (%)**  
(in parenthesis 95% confidence limits of 5 years survival)

	<i>Men</i>		<i>Women</i>		<b>ALL</b>	
	<i>obs</i>	<i>rel</i>	<i>obs</i>	<i>rel</i>	<i>obs</i>	<i>rel</i>
1 year	81	85	79	81	80	83
3 years	71	80	59	65	66	74
<b>5 years</b>	<b>49</b>	<b>60</b>	<b>53</b>	<b>64</b>	<b>52</b>	<b>63</b>
95% CI	(34-64)	(42-78)	(40-65)	(49-78)	(42-61)	(51-75)

# LYMPHOID LEUKAEMIA (ICD-IX 204)

## Pool of Italian Registries

REGISTRY	Number of cases		
	Men	Women	Total
Torino	89	79	168
Genova	112	76	188
Varese	84	71	155
Veneto	216	189	405
Parma	50	28	78
Modena	13	7	20
Ferrara	64	52	116
Romagna	89	46	135
Macerata	29	29	58
Firenze-Prato	138	89	227
Umbria	104	70	174
Latina	38	35	73
Sassari	25	25	50
Ragusa	37	26	63
<b>Italy</b>	<b>1,135</b>	<b>867</b>	<b>2,002</b>



### Observed and relative survival (%) by sex and age classes

	15-44		45-54		55-64		65-74		75+		ALL	
	obs	rel	obs	rel	obs	rel	obs	rel	obs	rel	obs	rel
<b>Men</b>												
1 year	76	76	81	82	83	84	83	86	62	69	75	79
3 years	51	52	78	79	71	74	66	73	39	53	58	66
<b>5 years</b>	<b>52</b>	<b>52</b>	<b>63</b>	<b>64</b>	<b>59</b>	<b>64</b>	<b>50</b>	<b>59</b>	<b>22</b>	<b>38</b>	<b>43</b>	<b>54</b>
95% CI	(33-51)	(34-52)	(52-73)	(0-0)	(53-65)	(57-70)	(44-55)	(0-0)	(18-26)	(31-46)	(40-46)	(50-57)
<b>Women</b>												
1 year	66	66	85	85	81	81	78	80	64	69	73	75
3 years	48	48	70	71	65	66	69	73	42	53	55	61
<b>5 years</b>	<b>44</b>	<b>44</b>	<b>60</b>	<b>61</b>	<b>60</b>	<b>62</b>	<b>55</b>	<b>60</b>	<b>28</b>	<b>41</b>	<b>44</b>	<b>53</b>
95% CI	(33-55)	(33-55)	(48-72)	(0-0)	(52-68)	(53-70)	(48-61)	(53-67)	(23-33)	(34-48)	(41-47)	(49-57)
<b>Total</b>												
1 year	72	72	83	83	82	83	81	83	63	69	74	77
3 years	50	50	74	75	69	71	67	72	40	53	57	64
<b>5 years</b>	<b>43</b>	<b>43</b>	<b>62</b>	<b>63</b>	<b>59</b>	<b>63</b>	<b>52</b>	<b>60</b>	<b>24</b>	<b>40</b>	<b>43</b>	<b>53</b>
95% CI	(36-50)	(36-50)	(53-69)	(54-71)	(54-64)	(58-68)	(48-56)	(55-64)	(21-28)	(35-45)	(41-45)	(51-56)

### Five Years Age-adjusted Relative Survival

Men and Women

