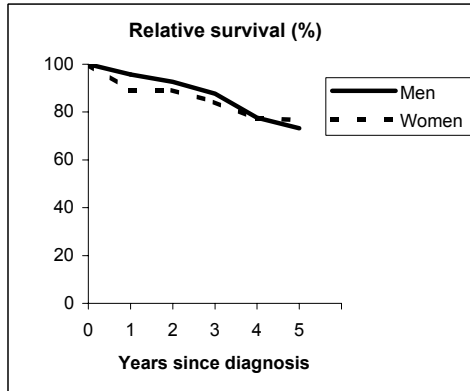


# CHRONIC LYMPHOID LEUKAEMIA (ICD-IX 204.1)

## TORINO - Incident cases 1990-'94

AGE CLASSES	Men	Women
15-44	2	0
45-54	8	4
55-64	23	11
65-74	21	19
75+	21	29
<b>ALL</b>	<b>75</b>	<b>63</b>

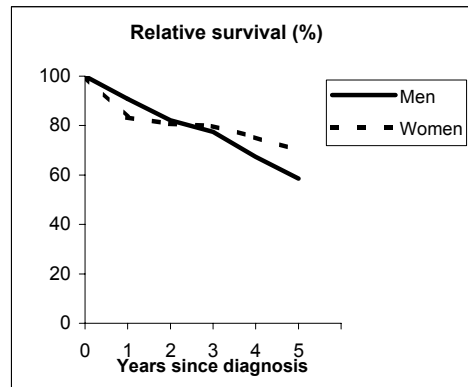


**Observed and Relative survival (%)**  
(in parenthesis 95% confidence limits of 5 years survival)

	Men		Women		ALL	
	<i>obs</i>	<i>rel</i>	<i>obs</i>	<i>rel</i>	<i>obs</i>	<i>rel</i>
1 year	92	96	86	89	89	93
3 years	78	88	75	84	77	86
<b>5 years</b>	<b>59</b>	<b>73</b>	<b>63</b>	<b>77</b>	<b>61</b>	<b>75</b>
95% CI	(48-70)	(59-86)	(51-74)	(62-90)	(53-69)	(65-84)

## GENOVA - Incident cases 1990-'94

AGE CLASSES	Men	Women
15-44	1	1
45-54	5	7
55-64	27	15
65-74	27	22
75+	34	18
<b>ALL</b>	<b>94</b>	<b>63</b>



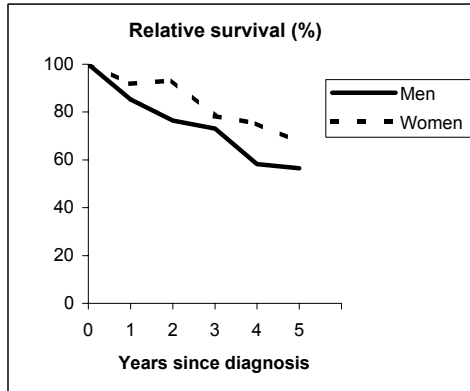
**Observed and Relative survival (%)**  
(in parenthesis 95% confidence limits of 5 years survival)

	Men		Women		ALL	
	<i>obs</i>	<i>rel</i>	<i>obs</i>	<i>rel</i>	<i>obs</i>	<i>rel</i>
1 year	87	91	81	83	85	88
3 years	68	77	73	80	70	78
<b>5 years</b>	<b>47</b>	<b>59</b>	<b>60</b>	<b>70</b>	<b>52</b>	<b>63</b>
95% CI	(37-57)	(46-71)	(47-71)	(55-83)	(44-60)	(54-73)

# CHRONIC LYMPHOID LEUKAEMIA (ICD-IX 204.1)

## VARESE - Incident cases 1990-'94

AGE CLASSES	Men	Women
15-44	2	1
45-54	2	4
55-64	15	10
65-74	22	14
75+	30	25
<b>ALL</b>	<b>71</b>	<b>54</b>

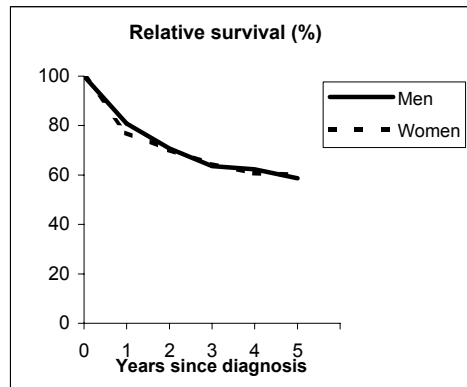


**Observed and Relative survival (%)**  
(in parenthesis 95% confidence limits of 5 years survival)

	Men		Women		ALL	
	obs	rel	obs	rel	obs	rel
1 year	80	85	89	92	84	88
3 years	61	73	70	78	65	75
<b>5 years</b>	<b>41</b>	<b>57</b>	<b>56</b>	<b>67</b>	<b>47</b>	<b>62</b>
95% CI	(30-52)	(42-73)	(42-68)	(51-82)	(39-56)	(50-73)

## VENETO - Incident cases 1990-'94

AGE CLASSES	Men	Women
15-44	3	5
45-54	14	8
55-64	32	20
65-74	37	33
75+	59	74
<b>ALL</b>	<b>145</b>	<b>140</b>



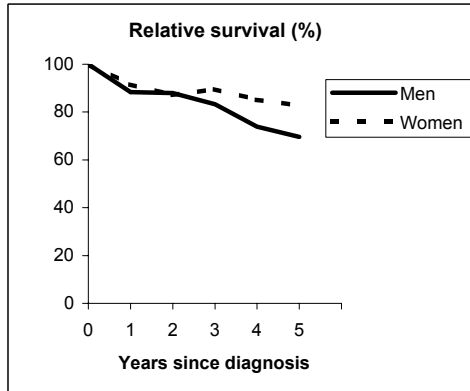
**Observed and Relative survival (%)**  
(in parenthesis 95% confidence limits of 5 years survival)

	Men		Women		ALL	
	obs	rel	obs	rel	obs	rel
1 year	77	81	74	77	75	79
3 years	54	64	57	64	55	64
<b>5 years</b>	<b>44</b>	<b>59</b>	<b>48</b>	<b>60</b>	<b>46</b>	<b>59</b>
95% CI	(36-52)	(48-70)	(40-57)	(50-70)	(40-52)	(52-67)

# CHRONIC LYMPHOID LEUKAEMIA (ICD-IX 204.1)

## MODENA - Incident cases 1990-'94

AGE CLASSES	Men	Women
15-44	1	1
45-54	3	6
55-64	12	10
65-74	20	17
75+	27	14
<b>ALL</b>	<b>63</b>	<b>48</b>

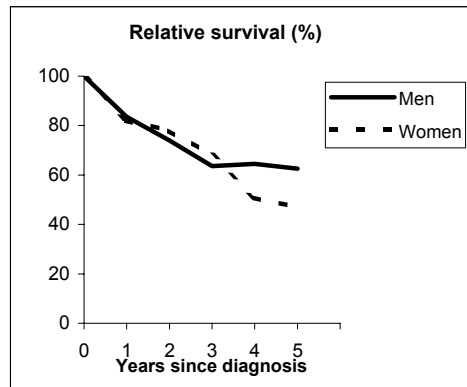


**Observed and Relative survival (%)**  
(in parenthesis 95% confidence limits of 5 years survival)

	Men		Women		ALL	
	obs	rel	obs	rel	obs	rel
1 year	84	88	89	92	86	90
3 years	71	83	83	90	76	86
<b>5 years</b>	<b>52</b>	<b>70</b>	<b>72</b>	<b>83</b>	<b>61</b>	<b>76</b>
95% CI	(40-64)	(53-86)	(58-83)	(66-95)	(51-70)	(64-87)

## FERRARA - Incident cases 1990-'94

AGE CLASSES	Men	Women
15-44	2	0
45-54	1	2
55-64	12	4
65-74	19	12
75+	17	23
<b>ALL</b>	<b>51</b>	<b>41</b>



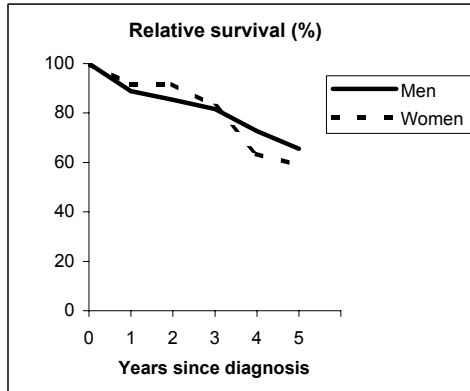
**Observed and Relative survival (%)**  
(in parenthesis 95% confidence limits of 5 years survival)

	Men		Women		ALL	
	obs	rel	obs	rel	obs	rel
1 year	80	83	78	82	79	83
3 years	55	64	59	68	57	66
<b>5 years</b>	<b>49</b>	<b>63</b>	<b>36</b>	<b>47</b>	<b>43</b>	<b>55</b>
95% CI	(35-63)	(45-80)	(23-52)	(30-67)	(33-54)	(43-69)

# CHRONIC LYMPHOID LEUKAEMIA (ICD-IX 204.1)

## ROMAGNA - Incident cases 1990-'94

AGE CLASSES	Men	Women
15-44	4	1
45-54	7	2
55-64	12	6
65-74	25	12
75+	27	15
<b>ALL</b>	<b>75</b>	<b>36</b>

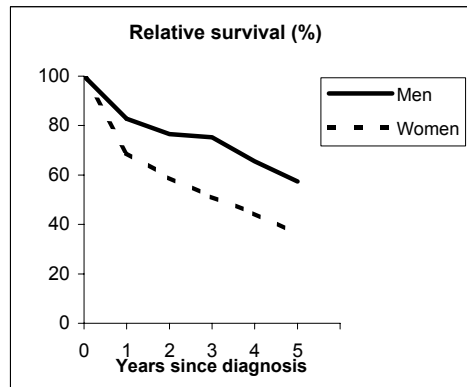


**Observed and Relative survival (%)**  
(in parenthesis 95% confidence limits of 5 years survival)

	Men		Women		ALL	
	obs	rel	obs	rel	obs	rel
1 year	85	89	89	92	86	90
3 years	72	82	75	83	73	82
<b>5 years</b>	<b>53</b>	<b>66</b>	<b>50</b>	<b>59</b>	<b>52</b>	<b>63</b>
95% CI	(41-64)	(52-79)	(34-65)	(40-77)	(42-61)	(52-75)

## FIRENZE-PRATO - Incident cases 1990-'94

AGE CLASSES	Men	Women
15-44	1	1
45-54	5	2
55-64	19	8
65-74	37	18
75+	42	35
<b>ALL</b>	<b>104</b>	<b>64</b>



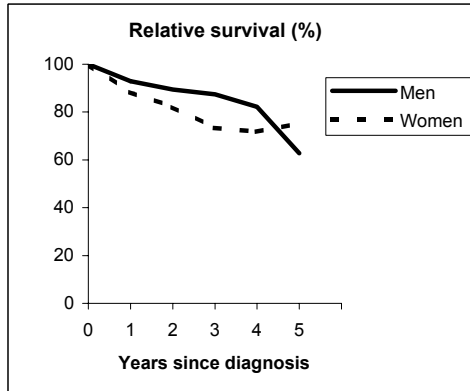
**Observed and Relative survival (%)**  
(in parenthesis 95% confidence limits of 5 years survival)

	Men		Women		ALL	
	obs	rel	obs	rel	obs	rel
1 year	79	83	66	69	74	78
3 years	64	75	44	51	57	66
<b>5 years</b>	<b>44</b>	<b>57</b>	<b>28</b>	<b>36</b>	<b>37</b>	<b>49</b>
95% CI	(34-53)	(45-70)	(18-40)	(24-52)	(30-45)	(40-59)

# CHRONIC LYMPHOID LEUKAEMIA (ICD-IX 204.1)

UMBRIA - Incident cases 1994-'96

AGE CLASSES	Men	Women
15-44	1	1
45-54	5	2
55-64	16	8
65-74	31	25
75+	22	19
<b>ALL</b>	<b>75</b>	<b>55</b>



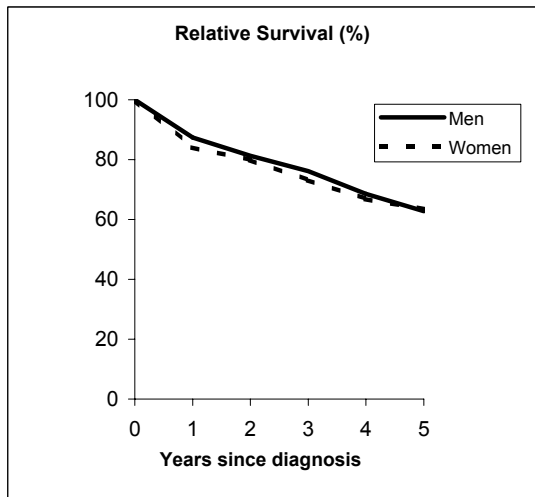
**Observed and Relative survival (%)**  
(in parenthesis 95% confidence limits of 5 years survival)

	<i>Men</i>		<i>Women</i>		<b>ALL</b>	
	<i>obs</i>	<i>rel</i>	<i>obs</i>	<i>rel</i>	<i>obs</i>	<i>rel</i>
1 year	89	93	85	88	88	91
3 years	77	87	65	73	72	81
<b>5 years</b>	<b>50</b>	<b>63</b>	<b>61</b>	<b>75</b>	<b>57</b>	<b>70</b>
95% CI	(33-67)	(42-84)	(48-73)	(59-90)	(46-67)	(57-83)

# CHRONIC LYMPHOID LEUKAEMIA (ICD-IX 204.1)

## Pool of Italian Registries

REGISTRY	Number of cases		
	Men	Women	Total
Torino	75	63	138
Genova	94	63	157
Varese	71	54	125
Veneto	145	140	285
Parma	33	20	53
Modena	63	48	111
Ferrara	51	41	92
Romagna	75	36	111
Macerata	21	24	45
Firenze-Prato	104	64	168
Umbria	89	59	148
Latina	27	25	52
Sassari	18	22	40
Ragusa	31	20	51
<b>Italy</b>	<b>883</b>	<b>675</b>	<b>1,558</b>



### Observed and relative survival (%) by sex and age classes

	15-44		45-54		55-64		65-74		75+		ALL	
	obs	rel	obs	rel	obs	rel	obs	rel	obs	rel	obs	rel
<b>Men</b>												
1 year	95	95	98	99	92	94	89	92	69	76	83	87
3 years	85	85	93	94	81	84	72	79	45	61	66	76
<b>5 years</b>	<b>68</b>	<b>69</b>	<b>78</b>	<b>80</b>	<b>66</b>	<b>71</b>	<b>55</b>	<b>66</b>	<b>25</b>	<b>43</b>	<b>49</b>	<b>63</b>
95% CI	(46-85)	(46-86)	(66-87)	(68-89)	(60-72)	(64-78)	(49-61)	(59-73)	(20-30)	(35-52)	(45-52)	(58-67)
<b>Women</b>												
1 year	92	92	98	98	94	94	88	89	69	74	81	84
3 years	92	92	85	85	79	81	77	81	48	60	65	73
<b>5 years</b>	<b>83</b>	<b>84</b>	<b>76</b>	<b>77</b>	<b>74</b>	<b>76</b>	<b>64</b>	<b>69</b>	<b>31</b>	<b>47</b>	<b>52</b>	<b>63</b>
95% CI	(55-95)	(56-96)	(61-86)	(62-87)	(65-81)	(67-84)	(57-70)	(62-76)	(26-37)	(39-55)	(48-56)	(59-68)
<b>Total</b>												
1 year	94	94	98	98	93	94	89	91	69	75	82	86
3 years	88	88	89	90	80	83	74	80	46	60	66	75
<b>5 years</b>	<b>74</b>	<b>75</b>	<b>77</b>	<b>79</b>	<b>69</b>	<b>73</b>	<b>59</b>	<b>67</b>	<b>28</b>	<b>45</b>	<b>50</b>	<b>63</b>
95% CI	(57-86)	(57-87)	(68-84)	(69-86)	(63-74)	(67-78)	(54-63)	(62-72)	(25-32)	(40-51)	(48-53)	(60-66)

### Five Years Age-adjusted Relative Survival of 1986-89 and 1990-94 incident cases

#### Men and Women

