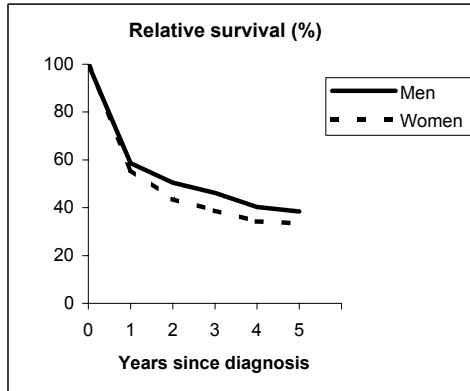


LEUKAEMIA (ICD-IX 204-208)

TORINO - Incident cases 1990-'94

AGE CLASSES	Men	Women
15-44	36	27
45-54	25	26
55-64	61	40
65-74	59	55
75+	57	80
ALL	238	228

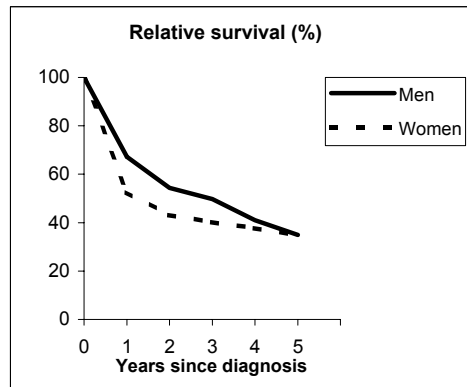


Observed and Relative survival (%)
(in parenthesis 95% confidence limits of 5 years survival)

	Men		Women		ALL	
	<i>obs</i>	<i>rel</i>	<i>obs</i>	<i>rel</i>	<i>obs</i>	<i>rel</i>
1 year	57	59	54	56	56	57
3 years	42	46	36	39	39	43
5 years	32	38	29	33	30	36
95% CI	(26-38)	(32-46)	(23-35)	(27-41)	(26-35)	(31-41)

GENOVA - Incident cases 1990-'94

AGE CLASSES	Men	Women
15-44	22	14
45-54	12	18
55-64	45	31
65-74	56	48
75+	70	62
ALL	205	173



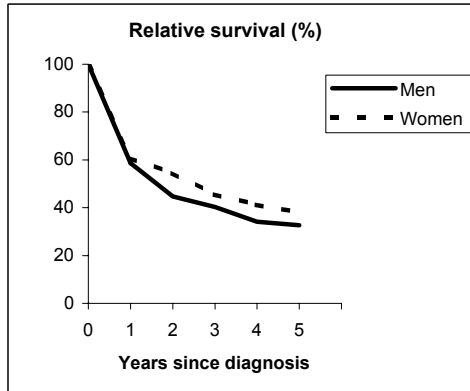
Observed and Relative survival (%)
(in parenthesis 95% confidence limits of 5 years survival)

	Men		Women		ALL	
	<i>obs</i>	<i>rel</i>	<i>obs</i>	<i>rel</i>	<i>obs</i>	<i>rel</i>
1 year	64	67	51	52	58	60
3 years	43	50	36	40	40	45
5 years	28	35	29	35	28	35
95% CI	(22-34)	(28-43)	(23-36)	(27-43)	(24-33)	(29-41)

LEUKAEMIA (ICD-IX 204-208)

VARESE - Incident cases 1990-'94

AGE CLASSES	Men	Women
15-44	28	28
45-54	10	19
55-64	37	35
65-74	56	36
75+	60	58
ALL	191	176

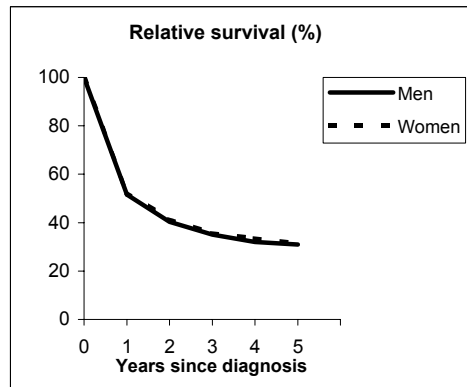


Observed and Relative survival (%)
(in parenthesis 95% confidence limits of 5 years survival)

	Men		Women		ALL	
	<i>obs</i>	<i>rel</i>	<i>obs</i>	<i>rel</i>	<i>obs</i>	<i>rel</i>
1 year	56	59	59	61	57	60
3 years	35	40	42	46	38	43
5 years	26	33	33	38	29	35
95% CI	(20-32)	(25-41)	(26-40)	(30-46)	(25-34)	(30-41)

VENETO - Incident cases 1990-'94

AGE CLASSES	Men	Women
15-44	67	58
45-54	47	33
55-64	110	65
65-74	124	110
75+	182	195
ALL	530	461



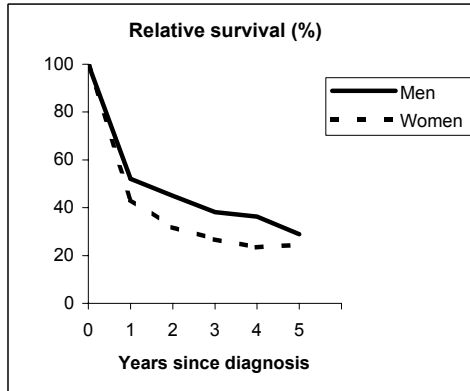
Observed and Relative survival (%)
(in parenthesis 95% confidence limits of 5 years survival)

	Men		Women		ALL	
	<i>obs</i>	<i>rel</i>	<i>obs</i>	<i>rel</i>	<i>obs</i>	<i>rel</i>
1 year	49	52	51	53	50	52
3 years	30	35	32	36	31	35
5 years	24	31	26	31	25	31
95% CI	(21-28)	(27-36)	(22-30)	(27-36)	(23-28)	(28-35)

LEUKAEMIA (ICD-IX 204-208)

PARMA - Incident cases 1990-'94

AGE CLASSES	Men	Women
15-44	12	5
45-54	12	9
55-64	26	16
65-74	27	27
75+	48	48
ALL	125	105

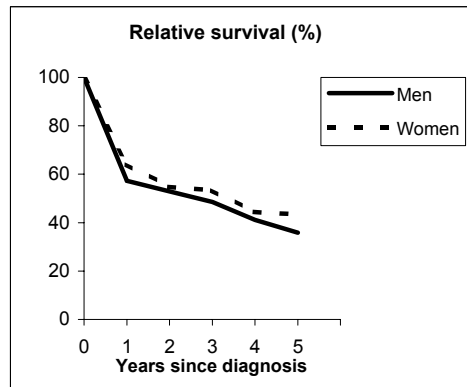


Observed and Relative survival (%)
(in parenthesis 95% confidence limits of 5 years survival)

	Men		Women		ALL	
	obs	rel	obs	rel	obs	rel
1 year	50	52	42	43	46	48
3 years	33	38	24	27	29	33
5 years	22	29	20	25	21	27
95% CI	(16-30)	(21-39)	(13-29)	(17-35)	(16-27)	(21-34)

MODENA - Incident cases 1990-'94

AGE CLASSES	Men	Women
15-44	17	21
45-54	10	17
55-64	25	28
65-74	46	43
75+	71	47
ALL	169	156



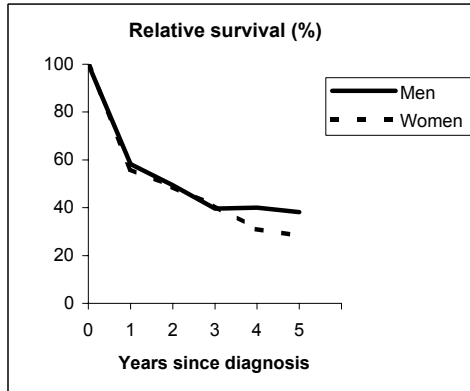
Observed and Relative survival (%)
(in parenthesis 95% confidence limits of 5 years survival)

	Men		Women		ALL	
	obs	rel	obs	rel	obs	rel
1 year	55	57	63	64	58	61
3 years	42	49	50	53	46	51
5 years	28	36	38	43	33	40
95% CI	(21-35)	(28-45)	(31-46)	(35-52)	(28-38)	(34-46)

LEUKAEMIA (ICD-IX 204-208)

FERRARA - Incident cases 1990-'94

AGE CLASSES	Men	Women
15-44	14	7
45-54	4	7
55-64	24	15
65-74	44	28
75+	50	45
ALL	136	102

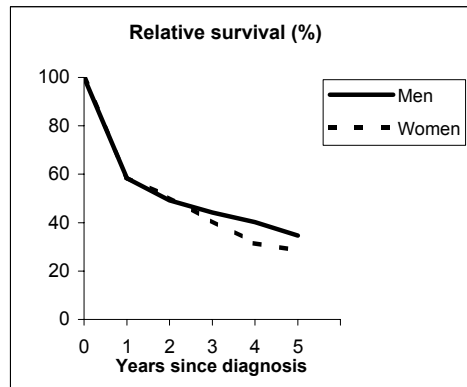


Observed and Relative survival (%)
(in parenthesis 95% confidence limits of 5 years survival)

	Men		Women		ALL	
	<i>obs</i>	<i>rel</i>	<i>obs</i>	<i>rel</i>	<i>obs</i>	<i>rel</i>
1 year	56	58	54	56	55	57
3 years	34	40	36	41	35	40
5 years	29	38	23	28	27	34
95% CI	(22-38)	(29-49)	(16-32)	(19-40)	(21-33)	(27-41)

ROMAGNA - Incident cases 1990-'94

AGE CLASSES	Men	Women
15-44	16	14
45-54	19	7
55-64	26	21
65-74	52	28
75+	65	47
ALL	178	117



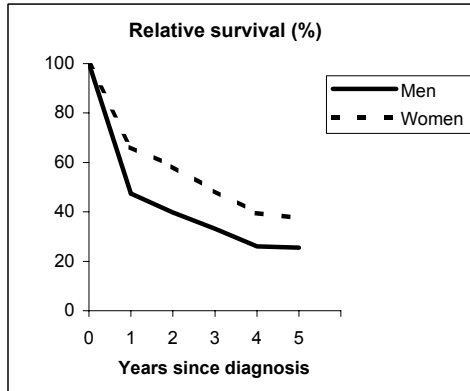
Observed and Relative survival (%)
(in parenthesis 95% confidence limits of 5 years survival)

	Men		Women		ALL	
	<i>obs</i>	<i>rel</i>	<i>obs</i>	<i>rel</i>	<i>obs</i>	<i>rel</i>
1 year	56	58	57	59	57	58
3 years	39	44	38	41	39	43
5 years	28	35	25	28	27	32
95% CI	(22-35)	(27-43)	(18-33)	(20-38)	(22-32)	(26-38)

LEUKAEMIA (ICD-IX 204-208)

MACERATA - Incident cases 1991-'94

AGE CLASSES	Men	Women
15-44	7	6
45-54	4	2
55-64	17	15
65-74	19	15
75+	21	26
ALL	68	64

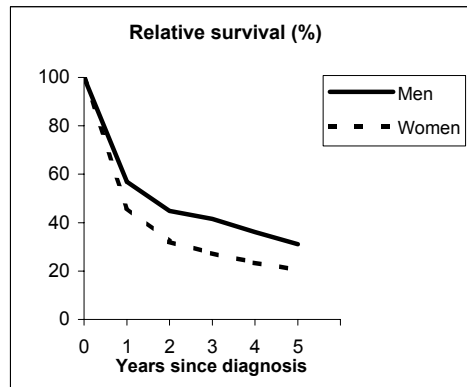


Observed and Relative survival (%)
(in parenthesis 95% confidence limits of 5 years survival)

	Men		Women		ALL	
	<i>obs</i>	<i>rel</i>	<i>obs</i>	<i>rel</i>	<i>obs</i>	<i>rel</i>
1 year	46	47	64	66	55	57
3 years	29	33	44	48	36	41
5 years	21	25	31	37	26	31
95% CI	(13-32)	(16-39)	(21-43)	(25-52)	(19-34)	(23-41)

FIRENZE-PRATO - Incident cases 1990-'94

AGE CLASSES	Men	Women
15-44	41	27
45-54	31	18
55-64	62	40
65-74	97	62
75+	112	110
ALL	343	257



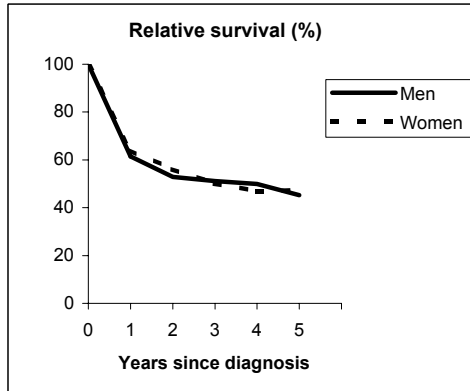
Observed and Relative survival (%)
(in parenthesis 95% confidence limits of 5 years survival)

	Men		Women		ALL	
	<i>obs</i>	<i>rel</i>	<i>obs</i>	<i>rel</i>	<i>obs</i>	<i>rel</i>
1 year	55	57	45	46	51	52
3 years	37	41	25	27	32	35
5 years	25	31	17	20	22	26
95% CI	(21-30)	(26-37)	(13-22)	(15-27)	(18-25)	(23-31)

LEUKAEMIA (ICD-IX 204-208)

UMBRIA - Incident cases 1994-'96

AGE CLASSES	Men	Women
15-44	21	15
45-54	23	10
55-64	36	23
65-74	67	43
75+	86	55
ALL	233	146

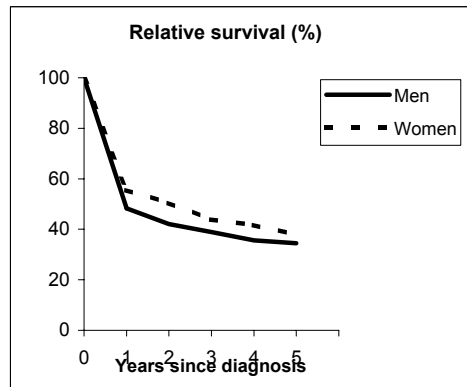


Observed and Relative survival (%)
(in parenthesis 95% confidence limits of 5 years survival)

	Men		Women		ALL	
	<i>obs</i>	<i>rel</i>	<i>obs</i>	<i>rel</i>	<i>obs</i>	<i>rel</i>
1 year	59	61	62	64	60	63
3 years	45	51	45	50	45	51
5 years	35	45	39	47	37	47
95% CI	(28-43)	(36-55)	(31-47)	(38-57)	(32-43)	(40-54)

LATINA - Incident cases 1990-'94

AGE CLASSES	Men	Women
15-44	18	8
45-54	6	7
55-64	26	18
65-74	28	20
75+	18	15
ALL	96	68



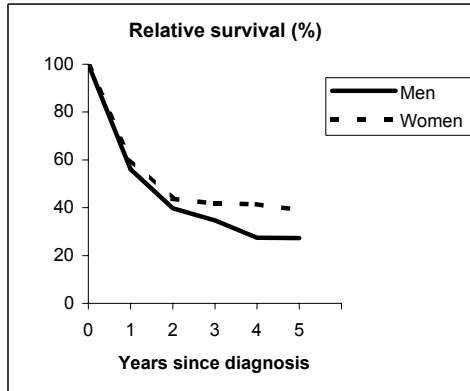
Observed and Relative survival (%)
(in parenthesis 95% confidence limits of 5 years survival)

	Men		Women		ALL	
	<i>obs</i>	<i>rel</i>	<i>obs</i>	<i>rel</i>	<i>obs</i>	<i>rel</i>
1 year	47	48	54	55	50	51
3 years	35	39	41	44	38	41
5 years	29	34	34	38	31	36
95% CI	(21-39)	(25-46)	(24-46)	(26-51)	(24-39)	(28-45)

LEUKAEMIA (ICD-IX 204-208)

SASSARI - Incident cases 1992-'94

AGE CLASSES	Men	Women
15-44	11	4
45-54	2	11
55-64	17	7
65-74	18	10
75+	34	25
ALL	82	57

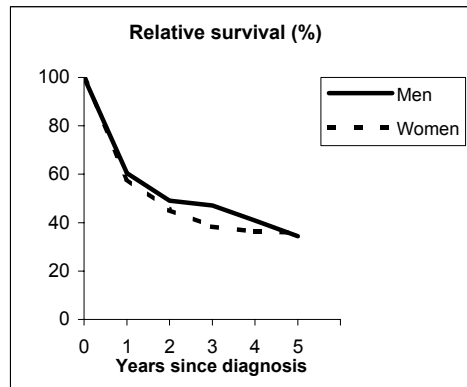


Observed and Relative survival (%)
(in parenthesis 95% confidence limits of 5 years survival)

	Men		Women		ALL	
	<i>obs</i>	<i>rel</i>	<i>obs</i>	<i>rel</i>	<i>obs</i>	<i>rel</i>
1 year	53	56	58	60	55	58
3 years	30	35	37	42	33	38
5 years	21	27	31	39	25	32
95% CI	(14-31)	(18-40)	(21-44)	(26-55)	(19-33)	(24-42)

RAGUSA - Incident cases 1990-'94

AGE CLASSES	Men	Women
15-44	11	12
45-54	10	5
55-64	16	9
65-74	27	11
75+	23	27
ALL	87	64

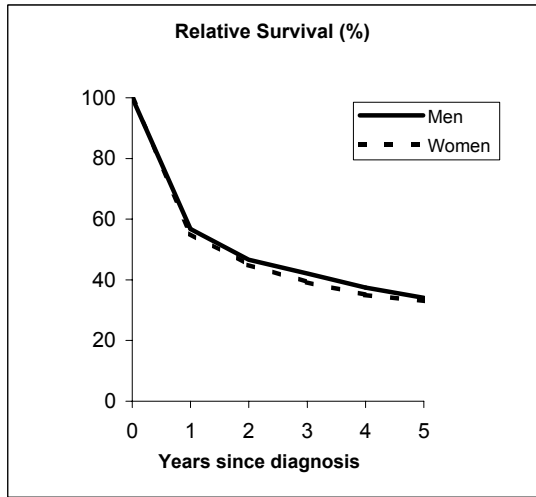


Observed and Relative survival (%)
(in parenthesis 95% confidence limits of 5 years survival)

	Men		Women		ALL	
	<i>obs</i>	<i>rel</i>	<i>obs</i>	<i>rel</i>	<i>obs</i>	<i>rel</i>
1 year	59	60	56	58	58	59
3 years	43	47	34	38	39	43
5 years	29	34	30	36	29	35
95% CI	(20-39)	(24-47)	(20-42)	(24-51)	(22-37)	(27-44)

Pool of Italian Registries

REGISTRY	Number of cases		
	Men	Women	Total
Torino	238	228	466
Genova	205	173	378
Varese	191	176	367
Veneto	530	461	991
Parma	125	105	230
Modena	169	156	325
Ferrara	136	102	238
Romagna	178	117	295
Macerata	68	64	132
Firenze-Prato	343	257	600
Umbria	233	146	379
Latina	96	68	164
Sassari	82	57	139
Ragusa	87	64	151
Italy	2,681	2,174	4,855



Observed and relative survival (%) by sex and age classes

	15-44		45-54		55-64		65-74		75+		ALL	
	obs	rel	obs	rel	obs	rel	obs	rel	obs	rel	obs	rel
Men												
1 year	71	71	66	66	63	64	55	57	40	44	54	57
3 years	50	51	53	53	46	48	38	42	21	29	37	42
5 years	43	43	45	46	36	39	27	33	12	20	27	34
95% CI	(37-48)	(38-49)	(39-52)	(39-53)	(32-41)	(35-44)	(24-31)	(29-37)	(10-14)	(17-24)	(25-29)	(32-36)
Women												
1 year	72	72	67	67	64	65	55	56	39	42	54	55
3 years	54	55	46	46	43	43	40	42	22	28	36	39
5 years	49	50	39	39	35	36	31	34	14	21	28	33
95% CI	(43-56)	(43-56)	(32-46)	(33-47)	(30-40)	(31-42)	(27-35)	(30-39)	(12-16)	(17-24)	(26-30)	(31-35)
Total												
1 year	72	72	66	67	63	64	55	57	40	43	54	56
3 years	52	52	50	50	45	46	39	42	22	28	36	41
5 years	46	46	42	43	36	38	29	33	13	20	27	34
95% CI	(42-50)	(42-50)	(37-47)	(38-48)	(33-39)	(35-41)	(26-32)	(30-36)	(11-14)	(18-23)	(26-29)	(32-35)

Five Years Age-adjusted Relative Survival of 1986-89 and 1990-94 incident cases

Men and Women

