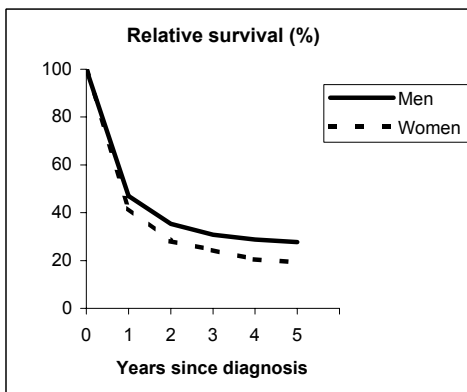


MYELOID LEUKAEMIA (ICD-IX 205)

TORINO - Incident cases 1990-'94

AGE CLASSES	Men	Women
15-44	21	20
45-54	14	16
55-64	26	18
65-74	30	27
75+	21	38
ALL	112	119

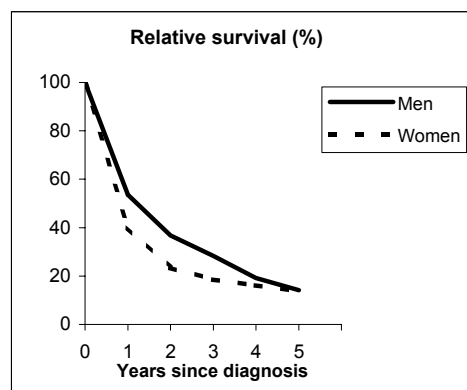


Observed and Relative survival (%)
(in parenthesis 95% confidence limits of 5 years survival)

	Men		Women		ALL	
	<i>obs</i>	<i>rel</i>	<i>obs</i>	<i>rel</i>	<i>obs</i>	<i>rel</i>
1 year	46	47	41	42	43	44
3 years	28	31	23	24	25	27
5 years	24	28	17	19	20	23
95% CI	(17-32)	(20-38)	(11-24)	(13-28)	(15-26)	(18-30)

GENOVA - Incident cases 1990-'94

AGE CLASSES	Men	Women
15-44	13	7
45-54	3	9
55-64	11	13
65-74	23	21
75+	18	27
ALL	68	77



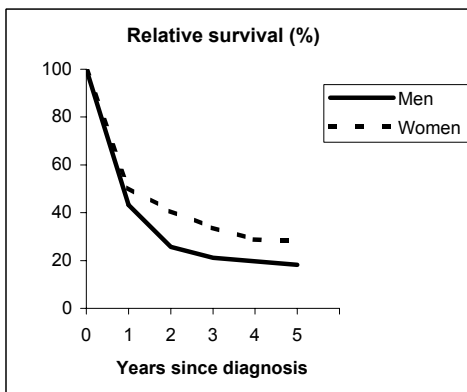
Observed and Relative survival (%)
(in parenthesis 95% confidence limits of 5 years survival)

	Men		Women		ALL	
	<i>obs</i>	<i>rel</i>	<i>obs</i>	<i>rel</i>	<i>obs</i>	<i>rel</i>
1 year	51	54	39	40	45	46
3 years	25	28	17	18	21	23
5 years	11	14	12	14	11	14
95% CI	(6-21)	(7-26)	(6-21)	(7-24)	(7-18)	(9-21)

MYELOID LEUKAEMIA (ICD-IX 205)

VARESE - Incident cases 1990-'94

AGE CLASSES	Men	Women
15-44	17	20
45-54	8	12
55-64	20	21
65-74	29	16
75+	27	25
ALL	101	94

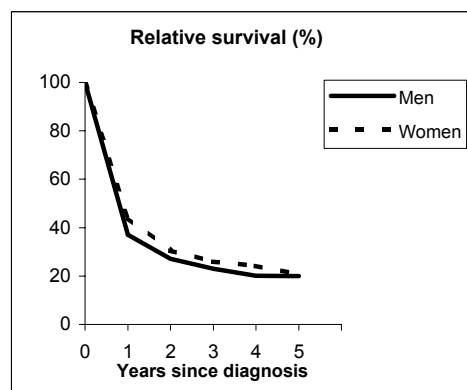


Observed and Relative survival (%)
(in parenthesis 95% confidence limits of 5 years survival)

	Men		Women		ALL	
	<i>obs</i>	<i>rel</i>	<i>obs</i>	<i>rel</i>	<i>obs</i>	<i>rel</i>
1 year	42	43	49	51	45	47
3 years	19	21	32	34	25	27
5 years	15	18	25	28	20	23
95% CI	(9-23)	(11-28)	(18-35)	(20-39)	(15-26)	(17-31)

VENETO - Incident cases 1990-'94

AGE CLASSES	Men	Women
15-44	32	34
45-54	21	15
55-64	55	32
65-74	60	45
75+	68	86
ALL	236	212



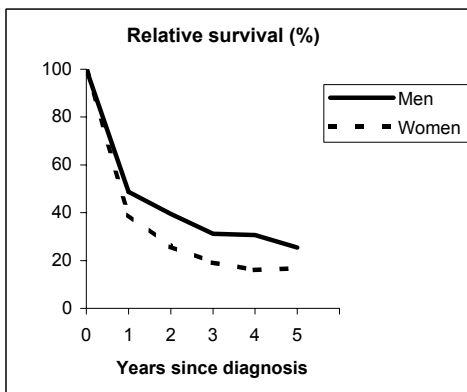
Observed and Relative survival (%)
(in parenthesis 95% confidence limits of 5 years survival)

	Men		Women		ALL	
	<i>obs</i>	<i>rel</i>	<i>obs</i>	<i>rel</i>	<i>obs</i>	<i>rel</i>
1 year	36	37	43	44	39	40
3 years	20	23	24	26	22	24
5 years	16	20	17	21	17	20
95% CI	(12-21)	(15-26)	(13-23)	(15-27)	(14-20)	(16-25)

MYELOID LEUKAEMIA (ICD-IX 205)

PARMA - Incident cases 1990-'94

AGE CLASSES	Men	Women
15-44	7	5
45-54	6	4
55-64	10	9
65-74	15	12
75+	18	28
ALL	56	58

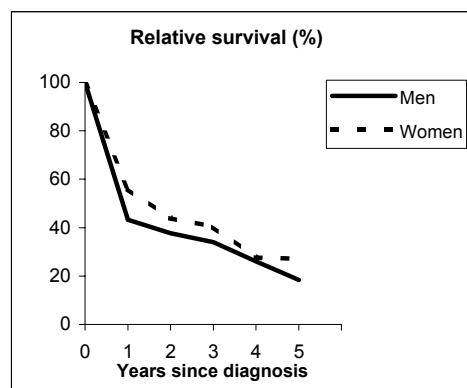


Observed and Relative survival (%)
(in parenthesis 95% confidence limits of 5 years survival)

	Men		Women		ALL	
	<i>obs</i>	<i>rel</i>	<i>obs</i>	<i>rel</i>	<i>obs</i>	<i>rel</i>
1 year	46	49	38	39	42	44
3 years	27	31	17	19	22	25
5 years	20	25	14	17	17	21
95% CI	(11-32)	(15-41)	(7-25)	(9-30)	(11-25)	(14-31)

MODENA - Incident cases 1990-'94

AGE CLASSES	Men	Women
15-44	12	18
45-54	6	10
55-64	9	15
65-74	21	21
75+	36	29
ALL	84	93



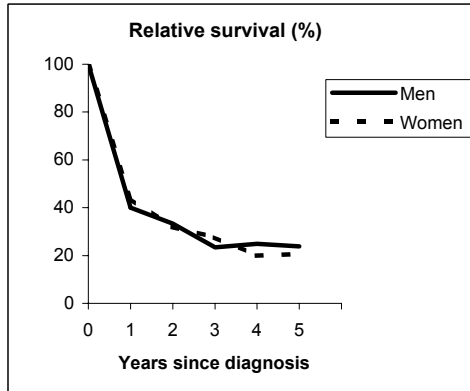
Observed and Relative survival (%)
(in parenthesis 95% confidence limits of 5 years survival)

	Men		Women		ALL	
	<i>obs</i>	<i>rel</i>	<i>obs</i>	<i>rel</i>	<i>obs</i>	<i>rel</i>
1 year	41	43	55	56	48	50
3 years	29	34	38	40	34	37
5 years	14	18	24	27	19	24
95% CI	(8-24)	(10-31)	(16-34)	(18-38)	(14-26)	(17-32)

MYELOID LEUKAEMIA (ICD-IX 205)

FERRARA - Incident cases 1990-'94

AGE CLASSES	Men	Women
15-44	4	3
45-54	2	5
55-64	8	8
65-74	18	11
75+	19	13
ALL	51	40

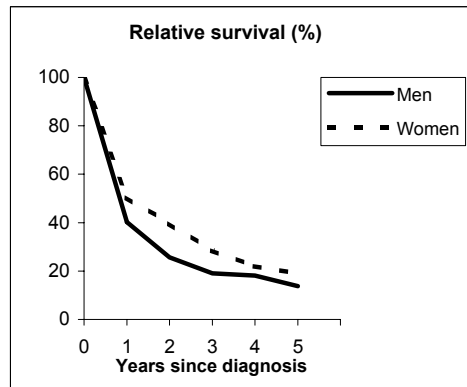


Observed and Relative survival (%)
(in parenthesis 95% confidence limits of 5 years survival)

	Men		Women		ALL	
	<i>obs</i>	<i>rel</i>	<i>obs</i>	<i>rel</i>	<i>obs</i>	<i>rel</i>
1 year	38	40	43	44	40	42
3 years	20	23	25	28	22	25
5 years	18	24	18	21	18	22
95% CI	(10-31)	(13-41)	(9-32)	(10-38)	(11-27)	(14-34)

ROMAGNA - Incident cases 1990-'94

AGE CLASSES	Men	Women
15-44	9	9
45-54	9	4
55-64	12	10
65-74	22	12
75+	22	26
ALL	74	61



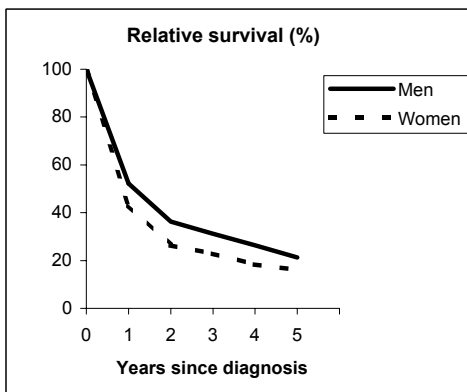
Observed and Relative survival (%)
(in parenthesis 95% confidence limits of 5 years survival)

	Men		Women		ALL	
	<i>obs</i>	<i>rel</i>	<i>obs</i>	<i>rel</i>	<i>obs</i>	<i>rel</i>
1 year	39	40	49	50	44	45
3 years	18	19	26	28	21	23
5 years	12	14	16	19	14	16
95% CI	(6-21)	(7-25)	(9-28)	(11-32)	(9-21)	(10-24)

MYELOID LEUKAEMIA (ICD-IX 205)

FIRENZE-PRATO - Incident cases 1990-'94

AGE CLASSES	Men	Women
15-44	21	15
45-54	21	12
55-64	31	27
65-74	41	31
75+	42	43
ALL	156	128

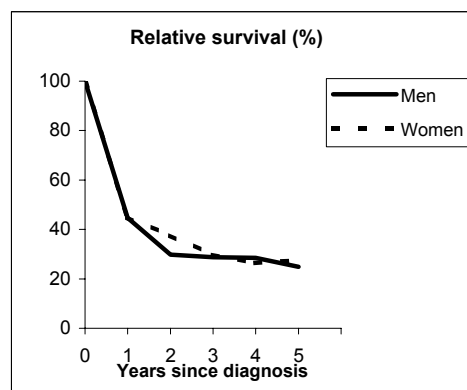


Observed and Relative survival (%)
(in parenthesis 95% confidence limits of 5 years survival)

	Men		Women		ALL	
	obs	rel	obs	rel	obs	rel
1 year	51	52	42	43	47	48
3 years	28	31	21	23	25	27
5 years	18	21	14	16	16	19
95% CI	(13-25)	(15-30)	(9-21)	(10-24)	(12-21)	(14-25)

UMBRIA - Incident cases 1994-'96

AGE CLASSES	Men	Women
15-44	11	7
45-54	9	6
55-64	18	10
65-74	24	15
75+	34	22
ALL	96	60



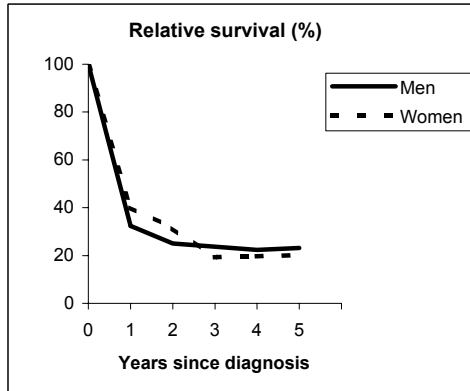
Observed and Relative survival (%)
(in parenthesis 95% confidence limits of 5 years survival)

	Men		Women		ALL	
	obs	rel	obs	rel	obs	rel
1 year	43	45	43	45	43	45
3 years	25	29	27	30	26	29
5 years	19	25	23	27	21	27
95% CI	(11-31)	(14-41)	(14-35)	(17-42)	(15-29)	(19-37)

MYELOID LEUKAEMIA (ICD-IX 205)

LATINA - Incident cases 1990-'94

AGE CLASSES	Men	Women
15-44	11	4
45-54	5	6
55-64	11	9
65-74	15	7
75+	9	7
ALL	51	33

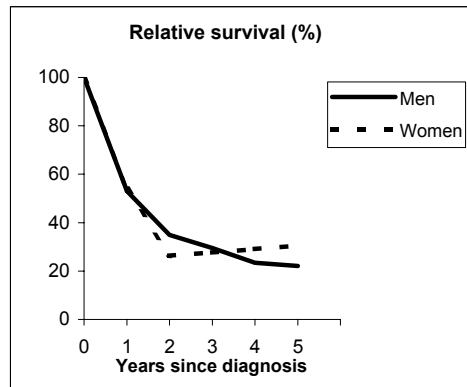


Observed and Relative survival (%)
(in parenthesis 95% confidence limits of 5 years survival)

	Men		Women		ALL	
	<i>obs</i>	<i>rel</i>	<i>obs</i>	<i>rel</i>	<i>obs</i>	<i>rel</i>
1 year	31	32	39	40	35	35
3 years	22	24	18	19	20	22
5 years	20	23	18	20	19	22
95% CI	(11-32)	(13-38)	(9-34)	(10-38)	(12-29)	(14-33)

SASSARI - Incident cases 1992-'94

AGE CLASSES	Men	Women
15-44	8	2
45-54	1	6
55-64	8	3
65-74	11	6
75+	21	12
ALL	49	29



Observed and Relative survival (%)
(in parenthesis 95% confidence limits of 5 years survival)

	Men		Women		ALL	
	<i>obs</i>	<i>rel</i>	<i>obs</i>	<i>rel</i>	<i>obs</i>	<i>rel</i>
1 year	50	53	52	54	51	53
3 years	25	30	24	28	25	29
5 years	17	22	24	31	20	25
95% CI	(9-30)	(12-39)	(12-42)	(15-53)	(12-30)	(16-39)

MYELOID LEUKAEMIA (ICD-IX 205)

Pool of Italian Registries

REGISTRY	Number of cases		
	Men	Women	Total
Torino	112	119	231
Genova	68	77	145
Varese	101	94	195
Veneto	236	212	448
Parma	56	58	114
Modena	84	93	177
Ferrara	51	40	91
Romagna	74	61	135
Macerata	27	25	52
Firenze-Prato	156	128	284
Umbria	106	65	171
Latina	51	33	84
Sassari	49	29	78
Ragusa	34	34	68
Italy	1,195	1,063	2,258



Observed and relative survival (%) by sex and age classes

	15-44		45-54		55-64		65-74		75+		ALL	
	obs	rel	obs	rel	obs	rel	obs	rel	obs	rel	obs	rel
Men												
1 year	70	71	61	61	46	47	36	37	26	29	42	44
3 years	52	52	39	40	24	25	18	20	11	14	24	27
5 years	44	44	36	37	16	18	10	12	5	9	17	21
95% CI	(36-51)	(37-51)	(28-46)	(29-47)	(12-22)	(13-24)	(7-14)	(9-17)	(3-8)	(5-14)	(15-20)	(19-24)
Women												
1 year	75	75	61	61	58	58	40	40	24	25	45	46
3 years	57	57	36	37	31	32	25	27	8	10	25	27
5 years	51	51	31	31	20	21	12	13	4	6	18	21
95% CI	(43-59)	(43-59)	(23-40)	(23-41)	(15-27)	(15-27)	(8-17)	(9-18)	(3-7)	(4-10)	(16-21)	(19-24)
Total												
1 year	73	73	61	61	52	52	38	38	25	27	43	45
3 years	54	54	38	38	27	28	19	20	9	12	24	27
5 years	47	47	34	34	18	19	11	13	5	7	18	21
95% CI	(42-52)	(42-53)	(28-40)	(28-41)	(15-22)	(15-23)	(9-14)	(10-16)	(3-6)	(5-10)	(16-19)	(19-23)

Five Years Age-adjusted Relative Survival

Men and Women

