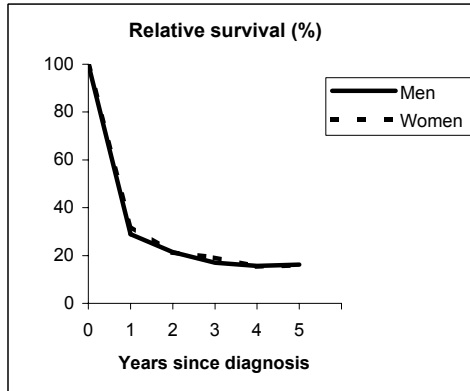


# ACUTE MYELOID LEUKAEMIA (ICD-IX 205.0)

## TORINO - Incident cases 1990-'94

AGE CLASSES	Men	Women
15-44	14	14
45-54	6	10
55-64	14	12
65-74	19	18
75+	9	24
<b>ALL</b>	<b>62</b>	<b>78</b>

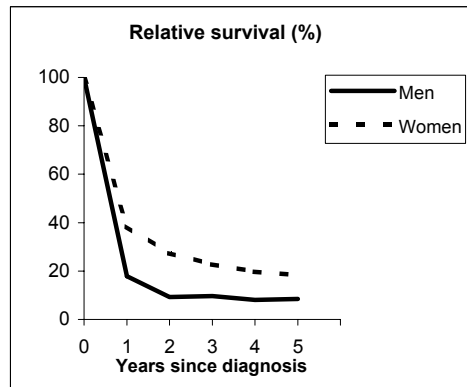


**Observed and Relative survival (%)**  
(in parenthesis 95% confidence limits of 5 years survival)

	Men		Women		ALL	
	<i>obs</i>	<i>rel</i>	<i>obs</i>	<i>rel</i>	<i>obs</i>	<i>rel</i>
1 year	28	29	32	32	30	31
3 years	16	17	18	19	17	18
<b>5 years</b>	<b>14</b>	<b>16</b>	<b>14</b>	<b>16</b>	<b>14</b>	<b>16</b>
95% CI	(8-25)	(9-28)	(8-23)	(9-27)	(9-21)	(11-24)

## VARESE - Incident cases 1990-'94

AGE CLASSES	Men	Women
15-44	9	17
45-54	5	6
55-64	9	14
65-74	20	8
75+	15	16
<b>ALL</b>	<b>58</b>	<b>61</b>



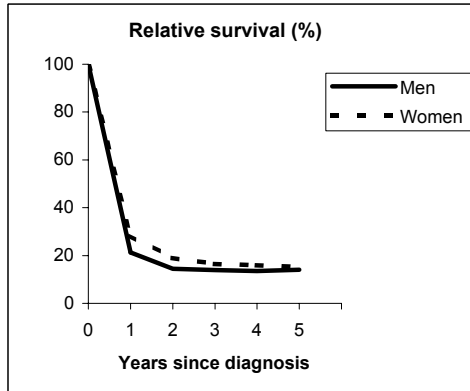
**Observed and Relative survival (%)**  
(in parenthesis 95% confidence limits of 5 years survival)

	Men		Women		ALL	
	<i>obs</i>	<i>rel</i>	<i>obs</i>	<i>rel</i>	<i>obs</i>	<i>rel</i>
1 year	17	18	38	38	28	29
3 years	9	10	21	23	15	17
<b>5 years</b>	<b>7</b>	<b>8</b>	<b>16</b>	<b>18</b>	<b>12</b>	<b>14</b>
95% CI	(3-16)	(3-20)	(9-28)	(10-31)	(7-19)	(8-22)

# ACUTE MYELOID LEUKAEMIA (ICD-IX 205.0)

## VENETO - Incident cases 1990-'94

AGE CLASSES	Men	Women
15-44	18	18
45-54	13	8
55-64	22	19
65-74	32	21
75+	27	39
<b>ALL</b>	<b>112</b>	<b>105</b>

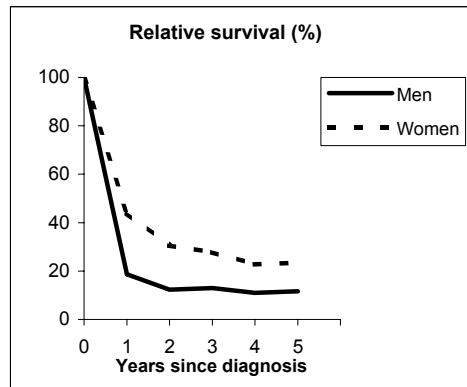


**Observed and Relative survival (%)**  
(in parenthesis 95% confidence limits of 5 years survival)

	Men		Women		ALL	
	obs	rel	obs	rel	obs	rel
1 year	21	21	28	28	24	25
3 years	13	14	15	16	14	15
<b>5 years</b>	<b>12</b>	<b>14</b>	<b>13</b>	<b>15</b>	<b>12</b>	<b>15</b>
95% CI	(7-19)	(8-23)	(8-21)	(9-24)	(9-17)	(10-21)

## MODENA - Incident cases 1990-'94

AGE CLASSES	Men	Women
15-44	7	16
45-54	3	5
55-64	7	11
65-74	8	14
75+	20	19
<b>ALL</b>	<b>45</b>	<b>65</b>



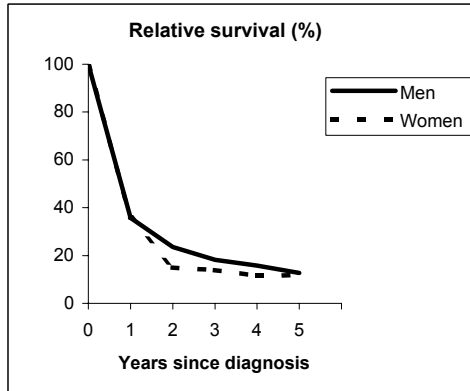
**Observed and Relative survival (%)**  
(in parenthesis 95% confidence limits of 5 years survival)

	Men		Women		ALL	
	obs	rel	obs	rel	obs	rel
1 year	18	19	43	44	33	34
3 years	11	13	26	28	20	22
<b>5 years</b>	<b>9</b>	<b>12</b>	<b>21</b>	<b>23</b>	<b>16</b>	<b>19</b>
95% CI	(4-21)	(5-27)	(13-32)	(14-36)	(10-24)	(12-29)

# ACUTE MYELOID LEUKAEMIA (ICD-IX 205.0)

## FIRENZE-PRATO - Incident cases 1990-'94

AGE CLASSES	Men	Women
15-44	9	11
45-54	12	8
55-64	14	16
65-74	20	18
75+	17	24
<b>ALL</b>	<b>72</b>	<b>77</b>

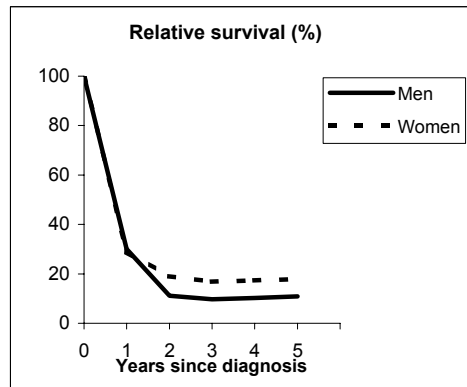


**Observed and Relative survival (%)**  
(in parenthesis 95% confidence limits of 5 years survival)

	Men		Women		ALL	
	<i>obs</i>	<i>rel</i>	<i>obs</i>	<i>rel</i>	<i>obs</i>	<i>rel</i>
1 year	35	36	35	36	35	36
3 years	17	18	13	14	15	16
<b>5 years</b>	<b>11</b>	<b>13</b>	<b>10</b>	<b>12</b>	<b>11</b>	<b>12</b>
95% CI	(5-20)	(6-24)	(5-19)	(6-22)	(7-17)	(8-19)

## UMBRIA - Incident cases 1994-'96

AGE CLASSES	Men	Women
15-44	6	6
45-54	4	6
55-64	11	4
65-74	20	11
75+	18	12
<b>ALL</b>	<b>59</b>	<b>39</b>



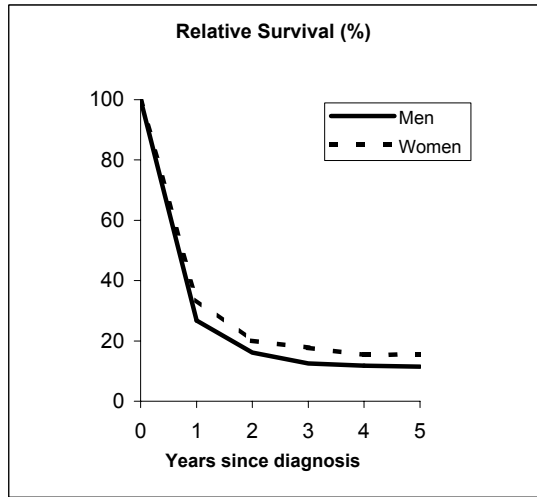
**Observed and Relative survival (%)**  
(in parenthesis 95% confidence limits of 5 years survival)

	Men		Women		ALL	
	<i>obs</i>	<i>rel</i>	<i>obs</i>	<i>rel</i>	<i>obs</i>	<i>rel</i>
1 year	29	30	28	29	29	30
3 years	8	10	15	17	11	13
<b>5 years</b>	<b>8</b>	<b>11</b>	<b>15</b>	<b>18</b>	<b>11</b>	<b>14</b>
95% CI	(4-18)	(5-24)	(7-30)	(8-35)	(6-19)	(8-23)

# ACUTE MYELOID LEUKAEMIA (ICD-IX 205.0)

## Pool of Italian Registries

REGISTRY	Number of cases		
	Men	Women	Total
Torino	62	78	140
Genova	35	52	87
Varese	58	61	119
Veneto	112	105	217
Parma	34	43	77
Modena	45	65	110
Ferrara	25	23	48
Romagna	48	36	84
Macerata	10	9	19
Firenze-Prato	72	77	149
Umbria	63	40	103
Latina	33	22	55
Sassari	24	14	38
Ragusa	14	16	30
<b>Italy</b>	<b>631</b>	<b>640</b>	<b>1,271</b>



### Observed and relative survival (%) by sex and age classes

	15-44		45-54		55-64		65-74		75+		ALL	
	obs	rel	obs	rel	obs	rel	obs	rel	obs	rel	obs	rel
<b>Men</b>												
1 year	58	58	43	44	28	28	18	18	8	9	26	27
3 years	37	37	23	24	11	12	3	4	1	1	11	13
<b>5 years</b>	<b>31</b>	<b>31</b>	<b>23</b>	<b>24</b>	<b>9</b>	<b>10</b>	<b>2</b>	<b>2</b>	<b>1</b>	<b>1</b>	<b>9</b>	<b>11</b>
95% CI	(22-40)	(23-41)	(14-35)	(15-36)	(5-16)	(6-17)	(1-5)	(1-6)	(0-3)	(0-5)	(7-12)	(9-15)
<b>Women</b>												
1 year	71	71	52	52	40	40	25	25	8	9	33	34
3 years	50	50	27	27	17	17	8	8	1	2	16	18
<b>5 years</b>	<b>44</b>	<b>44</b>	<b>24</b>	<b>24</b>	<b>11</b>	<b>11</b>	<b>6</b>	<b>7</b>	<b>1</b>	<b>1</b>	<b>14</b>	<b>16</b>
95% CI	(35-53)	(35-54)	(15-35)	(15-36)	(6-18)	(6-18)	(3-11)	(3-12)	(0-3)	(0-5)	(11-16)	(13-19)
<b>Total</b>												
1 year	65	65	48	48	34	34	21	21	8	9	29	30
3 years	43	44	25	25	14	14	5	6	1	1	14	15
<b>5 years</b>	<b>38</b>	<b>38</b>	<b>24</b>	<b>24</b>	<b>10</b>	<b>10</b>	<b>4</b>	<b>4</b>	<b>1</b>	<b>1</b>	<b>11</b>	<b>14</b>
95% CI	(31-44)	(31-45)	(17-32)	(17-32)	(7-14)	(7-15)	(2-6)	(2-7)	(0-2)	(0-4)	(10-13)	(12-16)

### Five Years Age-adjusted Relative Survival of 1986-89 and 1990-94 incident cases

#### Men and Women

