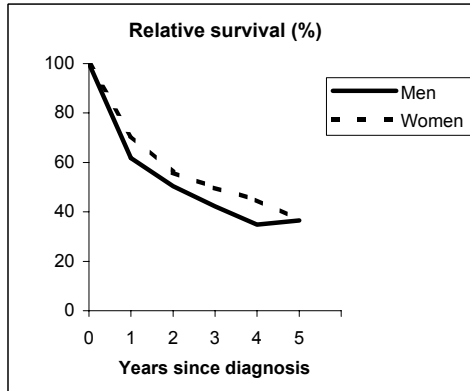


# CHRONIC MYELOID LEUKAEMIA (ICD-IX 205.1)

## VENETO - Incident cases 1990-'94

AGE CLASSES	Men	Women
15-44	11	11
45-54	6	4
55-64	17	11
65-74	19	14
75+	23	27
<b>ALL</b>	<b>76</b>	<b>67</b>

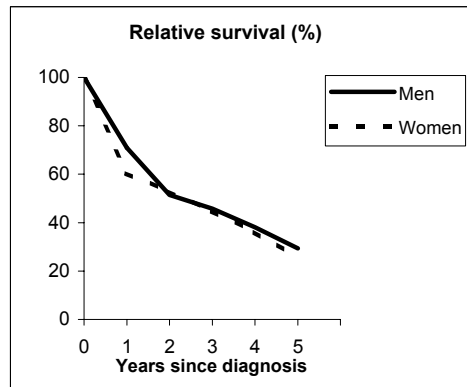


**Observed and Relative survival (%)**  
(in parenthesis 95% confidence limits of 5 years survival)

	Men		Women		ALL	
	obs	rel	obs	rel	obs	rel
1 year	59	62	69	71	64	66
3 years	37	42	45	50	41	46
<b>5 years</b>	<b>29</b>	<b>37</b>	<b>31</b>	<b>37</b>	<b>30</b>	<b>37</b>
95% CI	(20-40)	(25-50)	(21-43)	(25-51)	(23-38)	(28-47)

## FIRENZE-PRATO - Incident cases 1990-'94

AGE CLASSES	Men	Women
15-44	12	4
45-54	8	3
55-64	14	7
65-74	16	11
75+	23	9
<b>ALL</b>	<b>73</b>	<b>34</b>



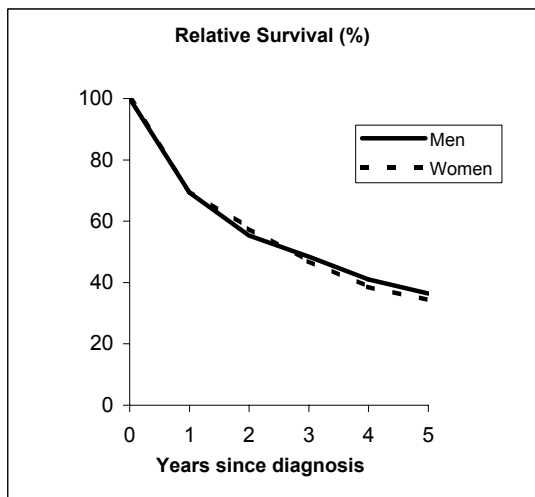
**Observed and Relative survival (%)**  
(in parenthesis 95% confidence limits of 5 years survival)

	Men		Women		ALL	
	obs	rel	obs	rel	obs	rel
1 year	68	71	59	60	65	67
3 years	41	46	41	45	41	45
<b>5 years</b>	<b>24</b>	<b>29</b>	<b>22</b>	<b>25</b>	<b>23</b>	<b>28</b>
95% CI	(16-36)	(19-43)	(11-39)	(13-45)	(16-33)	(19-39)

# CHRONIC MYELOID LEUKAEMIA (ICD-IX 205.1)

## Pool of Italian Registries

REGISTRY	Number of cases		
	Men	Women	Total
Torino	46	40	86
Genova	30	24	54
Varese	40	30	70
Veneto	76	67	143
Parma	18	9	27
Modena	37	28	65
Ferrara	20	10	30
Romagna	20	20	40
Macerata	15	11	26
Firenze-Prato	73	34	107
Umbria	40	22	62
Latina	16	11	27
Sassari	25	15	40
Ragusa	15	15	30
<b>Italy</b>	<b>465</b>	<b>330</b>	<b>795</b>



### Observed and relative survival (%) by sex and age classes

	15-44		45-54		55-64		65-74		75+		ALL	
	obs	rel	obs	rel	obs	rel	obs	rel	obs	rel	obs	rel
<b>Men</b>												
1 year	86	86	84	85	78	79	65	67	47	51	67	69
3 years	72	73	60	61	46	48	41	45	22	31	43	48
<b>5 years</b>	<b>60</b>	<b>61</b>	<b>53</b>	<b>54</b>	<b>31</b>	<b>33</b>	<b>24</b>	<b>28</b>	<b>11</b>	<b>19</b>	<b>29</b>	<b>36</b>
95% CI	(49-71)	(49-72)	(39-67)	(40-69)	(21-42)	(23-45)	(17-32)	(20-39)	(7-17)	(11-30)	(25-34)	(31-42)
<b>Women</b>												
1 year	90	90	73	73	92	92	64	65	50	53	68	70
3 years	79	80	59	60	58	59	41	43	19	24	43	47
<b>5 years</b>	<b>72</b>	<b>72</b>	<b>49</b>	<b>49</b>	<b>38</b>	<b>39</b>	<b>22</b>	<b>24</b>	<b>9</b>	<b>14</b>	<b>29</b>	<b>34</b>
95% CI	(56-83)	(56-84)	(33-64)	(34-65)	(26-50)	(27-52)	(14-33)	(15-37)	(5-16)	(8-24)	(24-34)	(29-40)
<b>Total</b>												
1 year	87	87	79	80	84	85	65	66	48	52	67	70
3 years	75	75	60	60	51	53	41	44	21	27	43	48
<b>5 years</b>	<b>64</b>	<b>65</b>	<b>51</b>	<b>52</b>	<b>34</b>	<b>36</b>	<b>23</b>	<b>27</b>	<b>10</b>	<b>16</b>	<b>29</b>	<b>36</b>
95% CI	(55-73)	(55-73)	(40-62)	(41-63)	(26-42)	(28-45)	(18-30)	(21-34)	(7-14)	(11-24)	(26-33)	(32-40)

### Five Years Age-adjusted Relative Survival of 1986-89 and 1990-94 incident cases

